

# L'importanza dell'approccio intersettoriale nell'ambito delle cure integrate e dell'equità nella salute

**Vania Putatti**

**Policy Coordinator**

Winter School, Promis

06 Marzo 2024

# Health outcomes

## Economic and social structures

power & wealth distribution, fiscal policy, gender & class

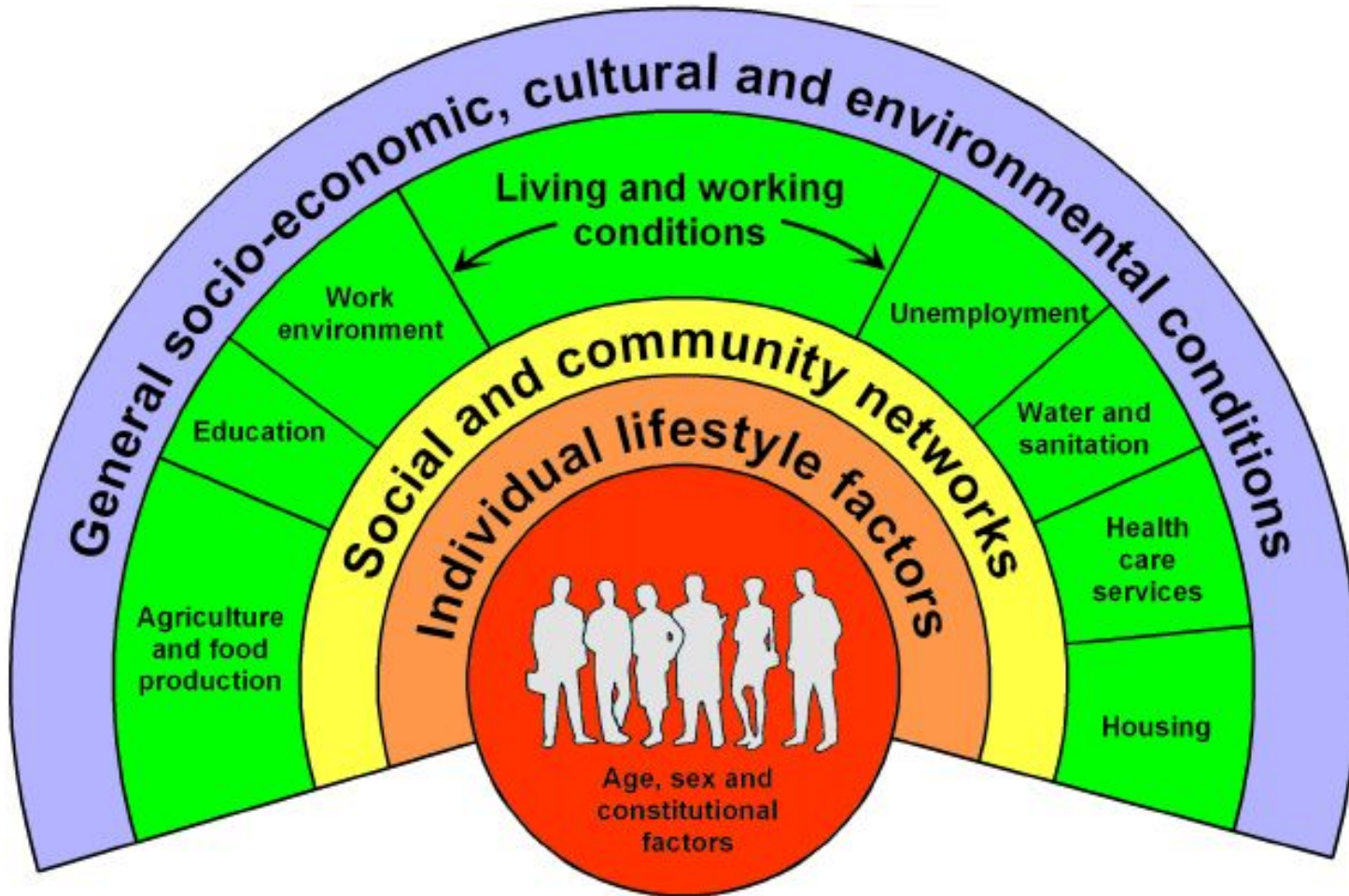
Biomedical aspects

**Daily living conditions** such as housing, education, employment, working conditions, social support



# Health Equity Lens

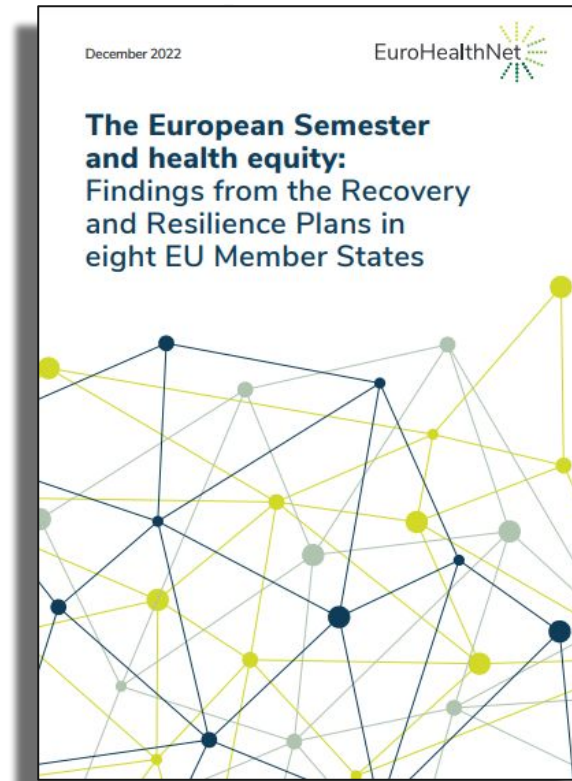
Social Determinants of Health



Source: Dahlgren and Whitehead, 1991



# Health in the European Semester



# Interviews with 16 high-level experts on public health and health equity



Fonds Gesundes Österreich



Rijksinstituut voor Volksgezondheid en Milieu  
Ministerie van Volksgezondheid, Welzijn en Sport

Federal Ministry  
Republic of Austria  
Social Affairs, Health, Care and Consumer Protection



AViQ  
Agence pour une Vie de Qualité  
Familles Santé Handicap

VLAAMS INSTITUUT  
GEZOND LEVEN

Agència de Salut Pública



NIJZ Nacionalni inštitut za javno zdravje

INŠTITUT RS ZA SOCIALNO VARSTVO  
SOCIAL PROTECTION INSTITUTE OF THE REPUBLIC OF SLOVENIA



Higher Education School  
EGAS MONIZ

Finnish institute for health and welfare

SNS SERVIÇO NACIONAL DE SAÚDE

soste



The Recovery and Resilience Plans lay the ground for reforms during the next six years. A total of 16 experts looked at their country's plans and provided further insights. These experts were also asked to support their statements with data when possible.



# Recommendations (selection)

Recognise the value, and invest sustainably in the following initiatives to be monitored by the European Semester process:

- ✓ Increased investments in **public health**, health promotion, and disease prevention
- ✓ Strengthen **integrated primary and community** care services
- ✓ Ensuring **digital inclusion** throughout the digital transition
- ✓ Providing support for families and ensuring **equal educational** opportunities for children
- ✓ Implement comprehensive **mental health frameworks across policies**
- ✓ Establishing stronger **monitoring and surveillance** systems
- ✓ Enhancing the attractiveness of **careers in health and social** services

# Wellbeing Economy



Source: The Wellbeing Economy Alliance (WEAll)

# Better economic model

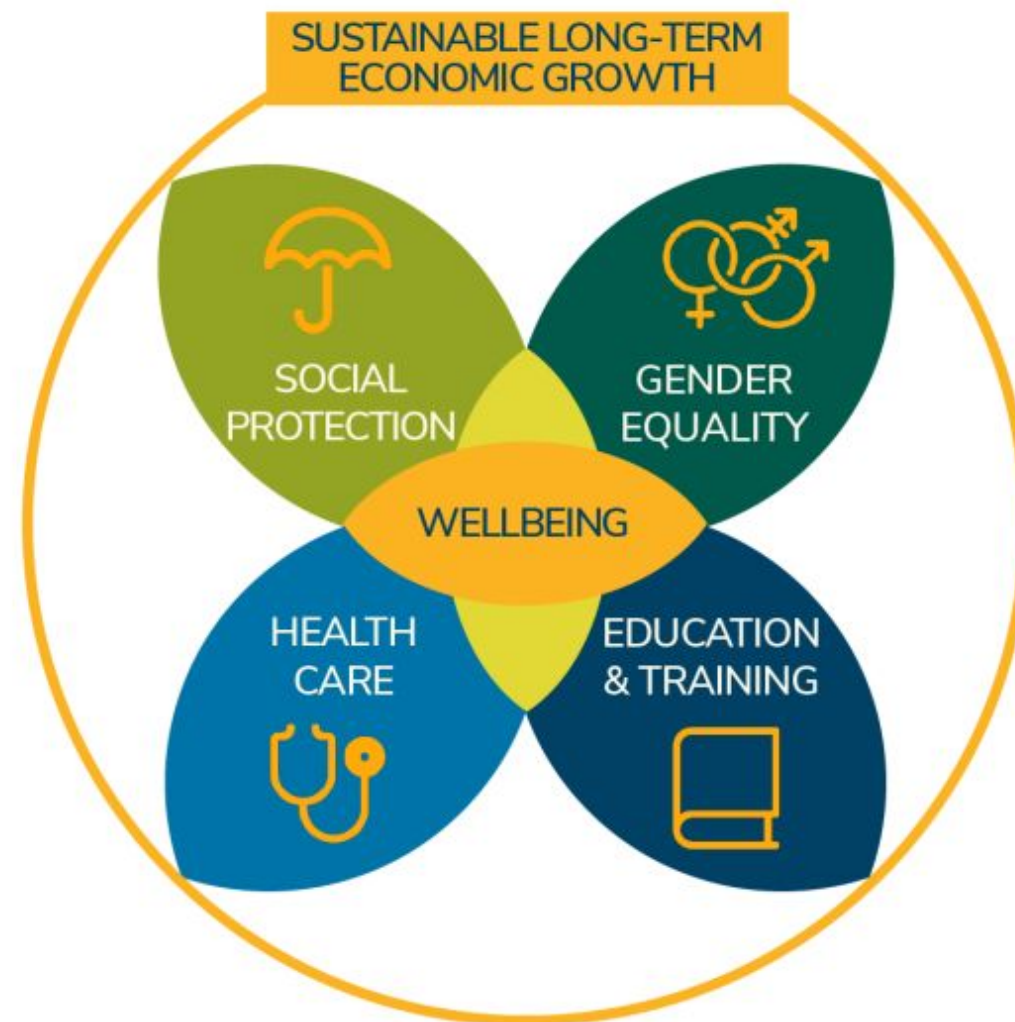
In an Economy of Wellbeing Model investments in the determinants of health lead to...

- ...greater health and wellbeing
- ...culture and education
- ...social and gender equity



**Progress that go  
beyond GDP**

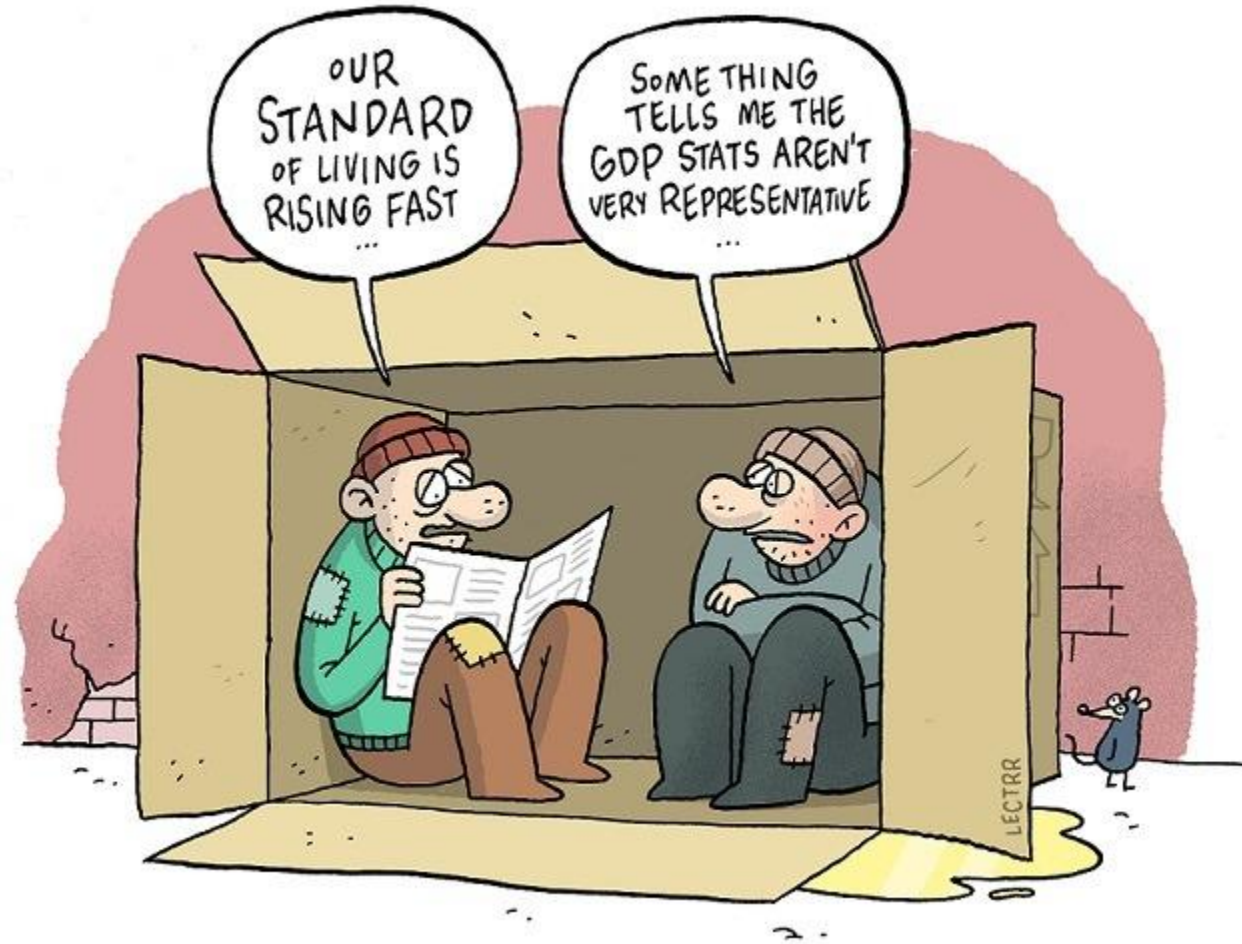
**Long-term sustainable  
growth**





# Obsolete economic model

- Silos approach with **competition** between sectors
- **Negative** externalities and spillover effects with not enough returns
- Fails in answering to modern **challenges** of our societies



# The costs of not investing in wellbeing

over 4%  
of total  
EU GDP

attributable to the  
costs of mental  
ill-health across  
the EU

€115  
billion

in economic potential  
lost annually due to  
premature deaths  
caused by  
non-communicable  
diseases across the  
EU

\$2,2  
trillion

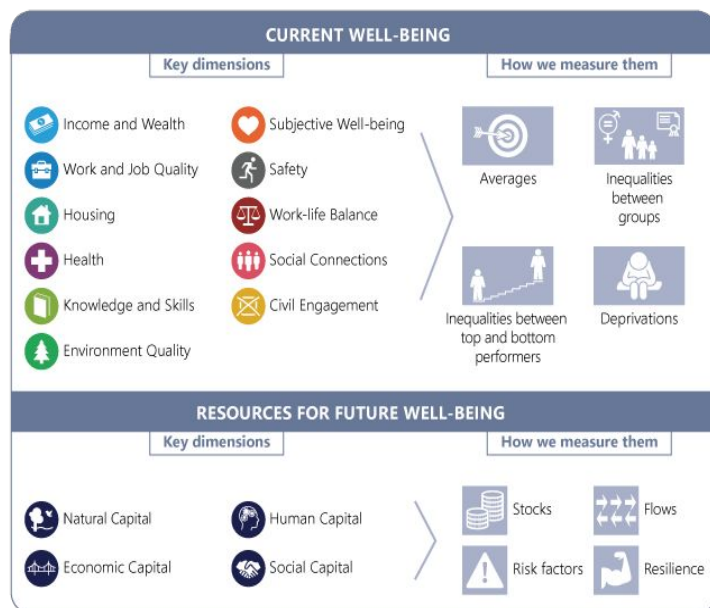
attributable to the  
costs of premature  
mortality due to air  
pollution globally in  
2020

*Sources: OECD, 2023 Lancet Countdown on health & climate change*

# International community



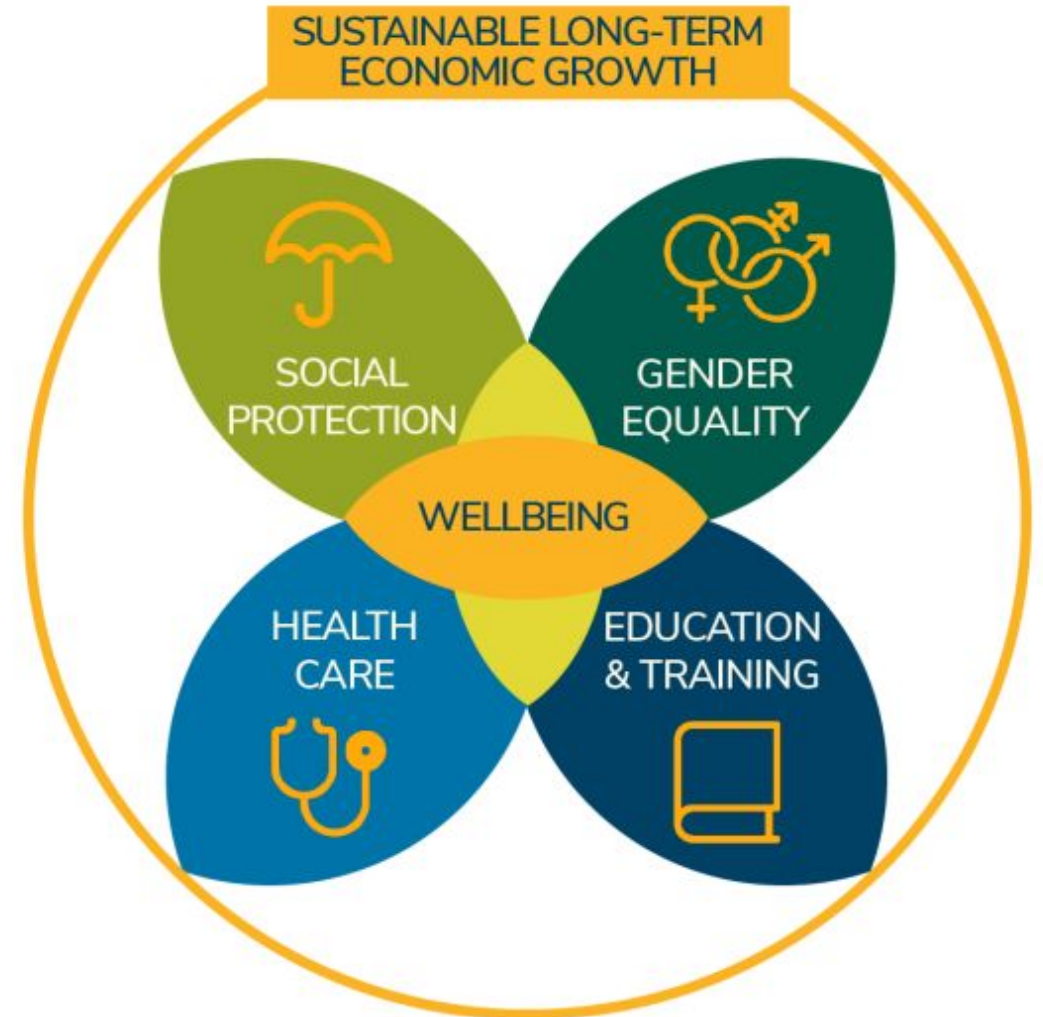
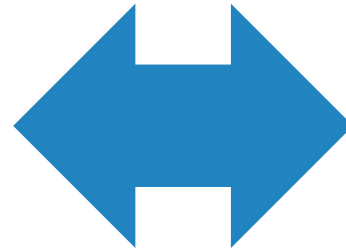
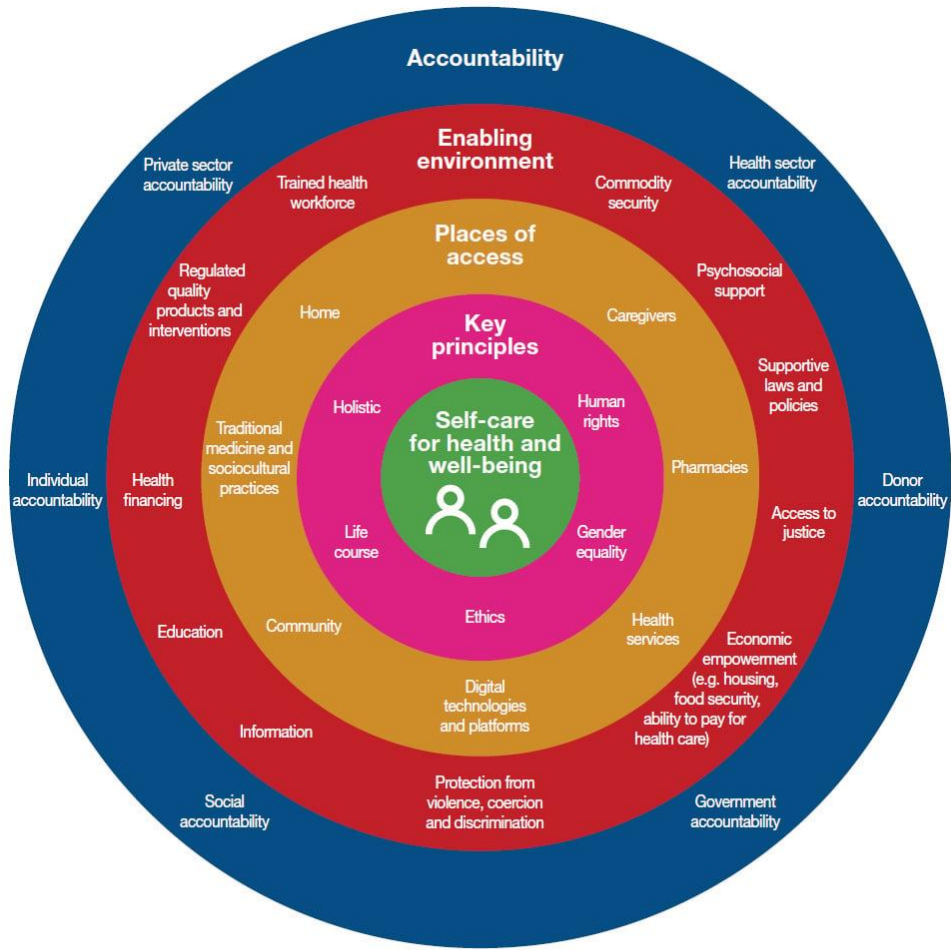
**WELLBEING  
ECONOMY  
ALLIANCE**



## WHO launches a new initiative to place well-being at the heart of economic recovery

8 July 2022 | News release | Reading time: 2 min (640 words)

# Integrated services and care



Source: adapted from Narasimhan M, Allotey P, Hardon A. Self-care interventions to advance health and well-being: a conceptual framework to inform normative guidance. *BMJ*. 2019;365:l688. doi:10.1136/bmj.l688.

# Wellbeing frameworks

*“Sustaining and protecting health during crises requires **integrated thinking and actions in relation to societal, community and individual well-being, as well as changes in attitudes and investments in key social structures** – particularly those that enable people to take more control of their own lives and health”*

WHO, 2023

# Integrated care and equity

**Access to Comprehensive Care:** Integrated services combine both social and health care, ensuring that individuals receive comprehensive care that addresses various aspects of their well-being.

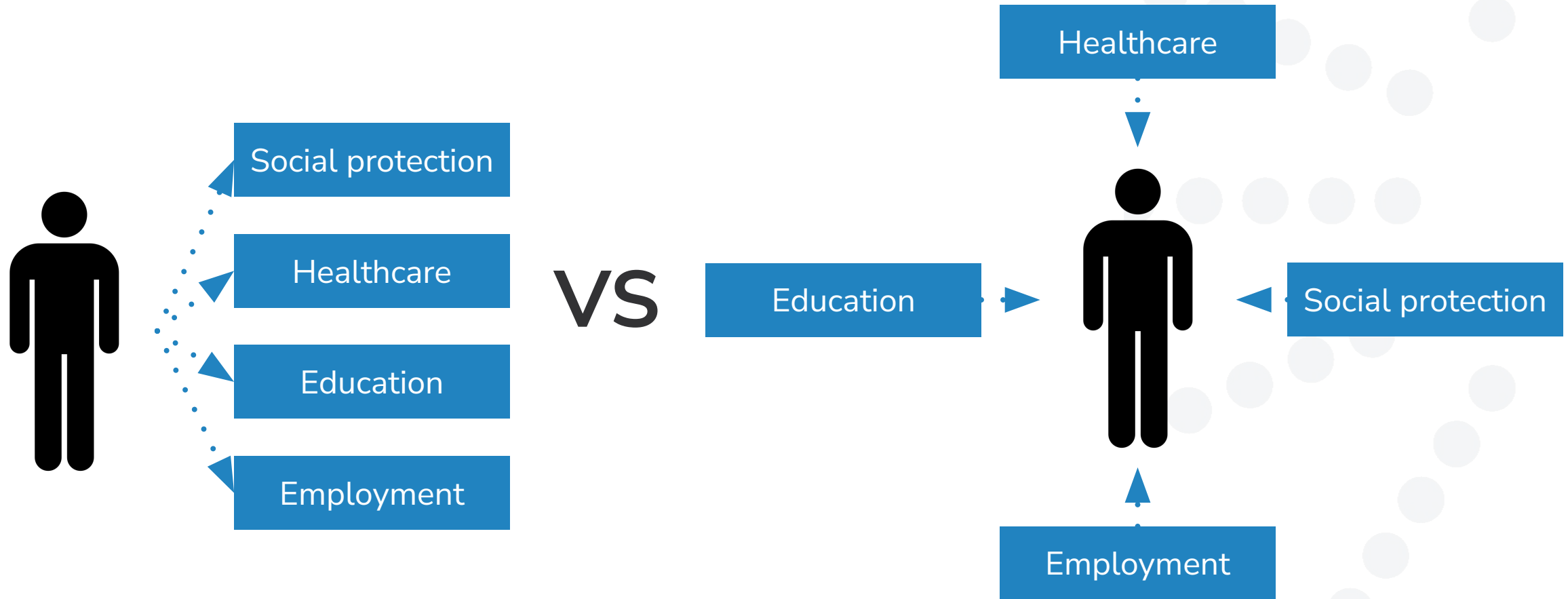
**Tailored and Coordinated Care:** Integrated services can provide more personalized and coordinated care plans for individuals

**Addressing Root Causes:** Health inequalities often stem from social and economic disparities

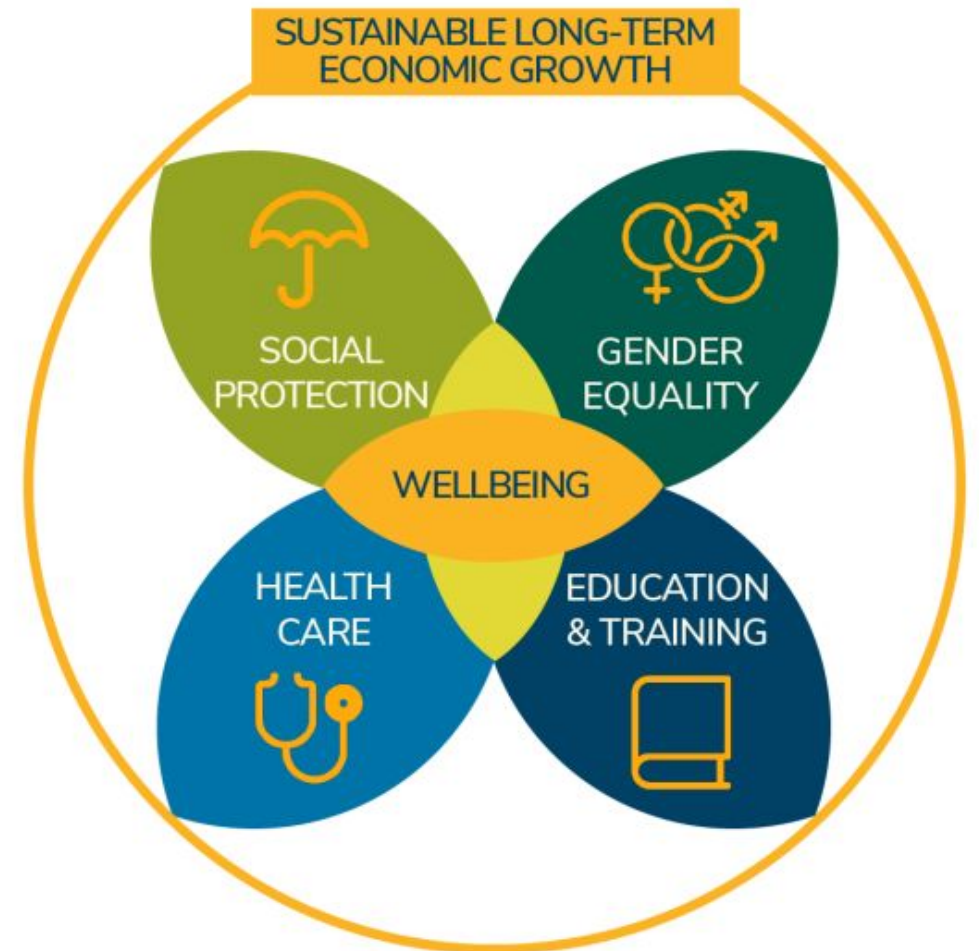
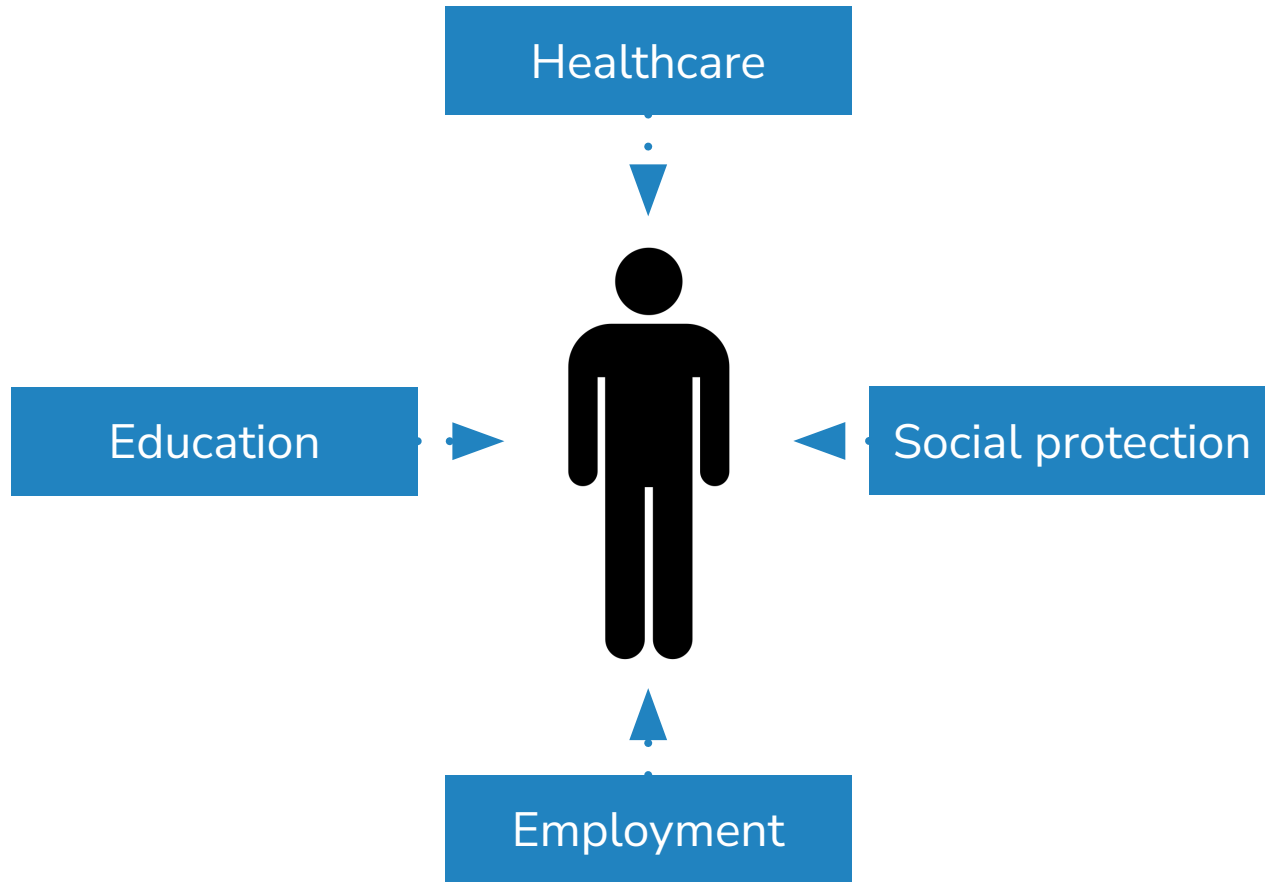
**Empowerment and Engagement:** Integrated services often involve active participation from individuals in their own care

**Efficient Use of Resources:** By coordinating social and health services, there is a more efficient use of resources

# Integrated person-centered approaches



# Integrated person-centered approach





**From integrated care....**

**...to integrated policies**

# Thank you

## Contact us

**Vania Putatti**

[v.putatti@eurohealthnet.eu](mailto:v.putatti@eurohealthnet.eu)

## Follow us



[www.eurohealthnet.eu](http://www.eurohealthnet.eu)



EuroHealthNet is co-funded by the European Union. However, the information and views set out in this presentation are those of the author(s) and do not necessarily reflect the official opinion of the European Commission. The Commission does not guarantee the accuracy of the data included in this presentation. Neither the Commission nor any person acting on the Commission's behalf may be held responsible for the use which may be made of the information contained therein.