



European Regional Development Fund (ERDF) support to LTC

2nd meeting of the national LTC coordinators
16 October 2023

Otilia CIOBANU; Otilia.CIOBANU@ec.europa.eu
DDG.03 Competence Centre - Inclusive Growth, Urban and Territorial Development
DG Regional and Urban Policy (DG REGIO)

Policy objectives (Art 5, Common Provision Regulation - CPR)

1. **A more competitive and smarter Europe** (innovative & smart economic transformation)
2. **A greener, low-carbon Europe** (including energy transition, the circular economy, climate adaptation and risk management)
3. **A more connected Europe** (enhancing mobility)
4. **A more social and inclusive Europe** (implementing the European Pillar of Social Rights)
5. **A Europe closer to citizens** (fostering sustainable and integrated development of all types of territories and local initiatives)

Recital 6 CPR (see also

Recital 5, ERDF/CF Regulation)

“Horizontal principles [...] should be respected in the **implementation of the Funds, taking into account the Charter of Fundamental Rights of the European Union**. Member States should also respect the obligations set out in the United Nations Convention on the Rights of the Child, and in the **United Nations Convention on the Rights of Persons with Disabilities** and ensure accessibility in line with Article 9 thereof and in accordance with **Union law harmonising accessibility requirements for products and services**. In that context, the Funds should be implemented in a way that promotes the transition from institutional to family-based and community-based care. Member States and the Commission should aim at **eliminating inequalities** and at promoting equality between men and women and integrating the gender perspective, as well as at **combating discrimination based on sex, racial or ethnic origin, religion or belief, disability, age or sexual orientation**. The Funds should **not support actions that contribute to any form of segregation or exclusion**, and, when financing infrastructure, **should ensure the accessibility for persons with disabilities.**[...]”

Charter of Fundamental Rights ([link](#))

Article 21, Non-discrimination

1. **Any discrimination based on any ground such as sex, race, colour, ethnic or social origin, genetic features, language, religion or belief, political or any other opinion, membership of a national minority, property, birth, disability, age or sexual orientation shall be prohibited.**

2. Within the scope of application of the Treaties and without prejudice to any of their specific provisions, any discrimination on grounds of nationality shall be prohibited.

Horizontal enabling conditions (for all CPR funds: e.g. ESF+, ERDF, AMIF etc.):

- Effective application and implementation of the **Charter of Fundamental Rights**
- Implementation and application of the **UNCRPD**: a national framework to ensure implementation of the UNCRPD is in place that includes:
 1. **Objectives with measurable goals**, data collection and monitoring mechanisms.
 2. Arrangements to ensure that the **accessibility** policy, legislation and standards are properly reflected in the preparation and implementation of the programmes.
 3. **Reporting arrangements** to the monitoring committee regarding cases of non-compliance of operations supported by the Funds with the UNCRPD and complaints regarding the UNCRPD (...).

Article 9, CPR on horizontal principles

1. Member States and the Commission shall ensure **respect for fundamental rights and compliance with the Charter of Fundamental Rights** of the European Union in the implementation of the Funds.

2. Member States and the Commission shall ensure that equality between men and women, gender mainstreaming and the integration of a gender perspective are taken into account and promoted throughout the preparation, implementation, monitoring, reporting and evaluation of programmes.

3. Member States and the Commission shall take **appropriate steps to prevent any discrimination** based on gender, racial or ethnic origin, religion or belief, **disability, age** or sexual orientation during the preparation, implementation, monitoring, reporting and evaluation of programmes. In particular, **accessibility for persons with disabilities shall be taken into account throughout the preparation and implementation of programmes.**

[...]



Other relevant CPR provisions

Partnership principle (Art 8)

Involvement in all programming stages of:

- relevant bodies representing civil society, such as:
 - NGOs and bodies responsible for promoting:
 - **social inclusion**
 - **fundamental rights**
 - **rights of persons with disabilities**
 - **non-discrimination**
 - etc.

+ in Monitoring Committees (Art 39)

Article 39 - Composition of the monitoring committee

1. Each Member State shall determine the composition of the monitoring committee and shall ensure a **balanced representation of the relevant Member State authorities and intermediate bodies and of representatives of the partners referred to in Article 8(1) through a transparent process.** [...]

The rules of procedure may allow **non-members**, including the EIB, to participate in the work of the monitoring committee.

The list of the members of the monitoring committee shall be **published on the website referred to in Article 49(1).**

Art 8(2)

MS shall, where relevant, allocate an appropriate percentage of the resources coming from the Funds for the administrative capacity building of social partners and civil society organisations.



Other relevant CPR provisions

Content of programmes (Article 22(3)(d)(iv))

- Programmes should include for each specific objective
 - **actions safeguarding equality, inclusion and non-discrimination**

Evaluations by MS (Article 44(1)):

- **inclusiveness and non-discrimination** may be included as relevant criteria for the evaluations by MS or the MA

Selection of operations by the MA (Article 73):

(1) The MA shall establish and apply criteria and procedures which are **non-discriminatory, transparent, ensure accessibility of persons with disabilities (...)** and **take account of the Charter of Fundamental Rights [...]**

(2) In selecting operations, the managing authority shall:

- (a) ensure that selected **operations comply with the programme**, including their consistency with the **relevant strategies underlying the programme [...]**
- (b) ensure that selected operations which fall within the scope of an enabling condition are consistent with **the corresponding strategies and planning documents established for the fulfilment of that enabling condition [...]**

Policy objective 4



❖ **LABOUR MARKET** (Art 3(d)(i) ERDF/CF Regulation)

4.1: enhancing the effectiveness and inclusiveness of labour markets and access to quality employment through developing social infrastructure and promoting social economy;

❖ **EDUCATION AND TRAINING** (Art 3(d)(ii) ERDF/CF Regulation)

4.2: improving equal access to inclusive and quality services in education, training and lifelong learning through developing accessible infrastructure, including by fostering resilience for distance and on-line education and training;

❖ **SOCIAL INCLUSION** (Art 3(d)(iii) ERDF/CF Regulation)

4.3: promoting the socioeconomic inclusion of marginalised communities, low income households and disadvantaged groups including people with special needs, through integrated actions, including housing and social services;

4.4: promoting the socio-economic integration of third country nationals, including migrants through integrated actions, including housing and social services; (Art 3(d)(iv) ERDF/CF Regulation)

❖ **HEALTH** (Art 3(d)(v) ERDF/CF Regulation)

4.5: ensuring equal access to health care and fostering resilience of health systems, including primary care, and promoting the transition from institutional to family- and community-based care;

❖ **CULTURE AND TOURISM** (Art 3(d)(vi) ERDF/CF Regulation)

4.6. enhancing the role of culture and sustainable tourism in economic development, social inclusion and social innovation.

Horizontal and thematic enabling conditions (Art 15 CPR)

- ❖ Relevant horizontal enabling conditions (for all CPR funds): EU Charter of Fundamental Rights, UNCRPD (Annex III CPR)
- ❖ Thematic enabling conditions under Policy Objective 4 (Annex IV CPR):

4.1	Strategic policy framework for active labour market policies
4.2	National strategic framework for gender equality
4.3	National or regional strategic policy framework for the education and training system at all levels
4.4	National or regional strategic policy or legislative framework for social inclusion and poverty reduction
4.5	National Roma inclusion strategic policy framework
4.6	National or regional strategic policy framework for health and long-term care

***Minimum requirements for integrated territorial development under Policy Objective 5

Relevant thematic enabling conditions (TEC) under Policy Objective 4 (CPR) – 1 of 2

TEC 4.4: National strategic policy framework for **social inclusion and poverty reduction**

A national or regional strategic policy or legislative framework for social inclusion and poverty reduction is in place that includes:

1. **Evidence-based diagnosis of poverty and social exclusion**, including child poverty, in particular as regards **equal access to quality services for children in vulnerable situations as well as homelessness**, spatial and educational segregation, **limited access to essential services and infrastructure**, and the **specific needs of vulnerable people of all ages**.
2. Measures to **prevent and combat segregation in all fields, including social protection**, inclusive labour markets and **access to quality services for vulnerable people**, including migrants and refugees.
3. **Measures for the shift from institutional to family- and community-based care.**
4. Arrangements for ensuring that its design, implementation, monitoring and review is conducted in **close cooperation with relevant stakeholders**, including social partners and relevant civil society organisations.

PO4 'A more social and inclusive Europe, implementing the European Pillar of Social Rights'

Social Policies: tackling poverty and promoting social inclusion

ERDF Specific Objective 4.3: promoting the **socioeconomic inclusion of marginalised communities, low income households and disadvantaged groups**, including people with special needs, through integrated actions, including **housing and social services**

- Measures should be connected across thematic areas, providing access to **mainstream high-quality non-segregated services in education, employment, housing, health-, social-, child-care, anti-discrimination measures, community empowerment and awareness-raising** etc.
- Actions should improve the **access to inclusive, non-segregated facilities**, including dismantling existing segregated educational services and housing, as well as prevent and combat segregation
- **Shift from institutional to non-residential family- and community-based services**
- Regeneration of deprived urban and rural areas

Territorial instruments:

- ❖ Integrated Territorial Investments (ITI)
- ❖ Community-led Local Development (CLLD)
- ❖ Sustainable Urban Development (SUD)

PO4 'A more social and inclusive Europe, implementing the European Pillar of Social Rights'

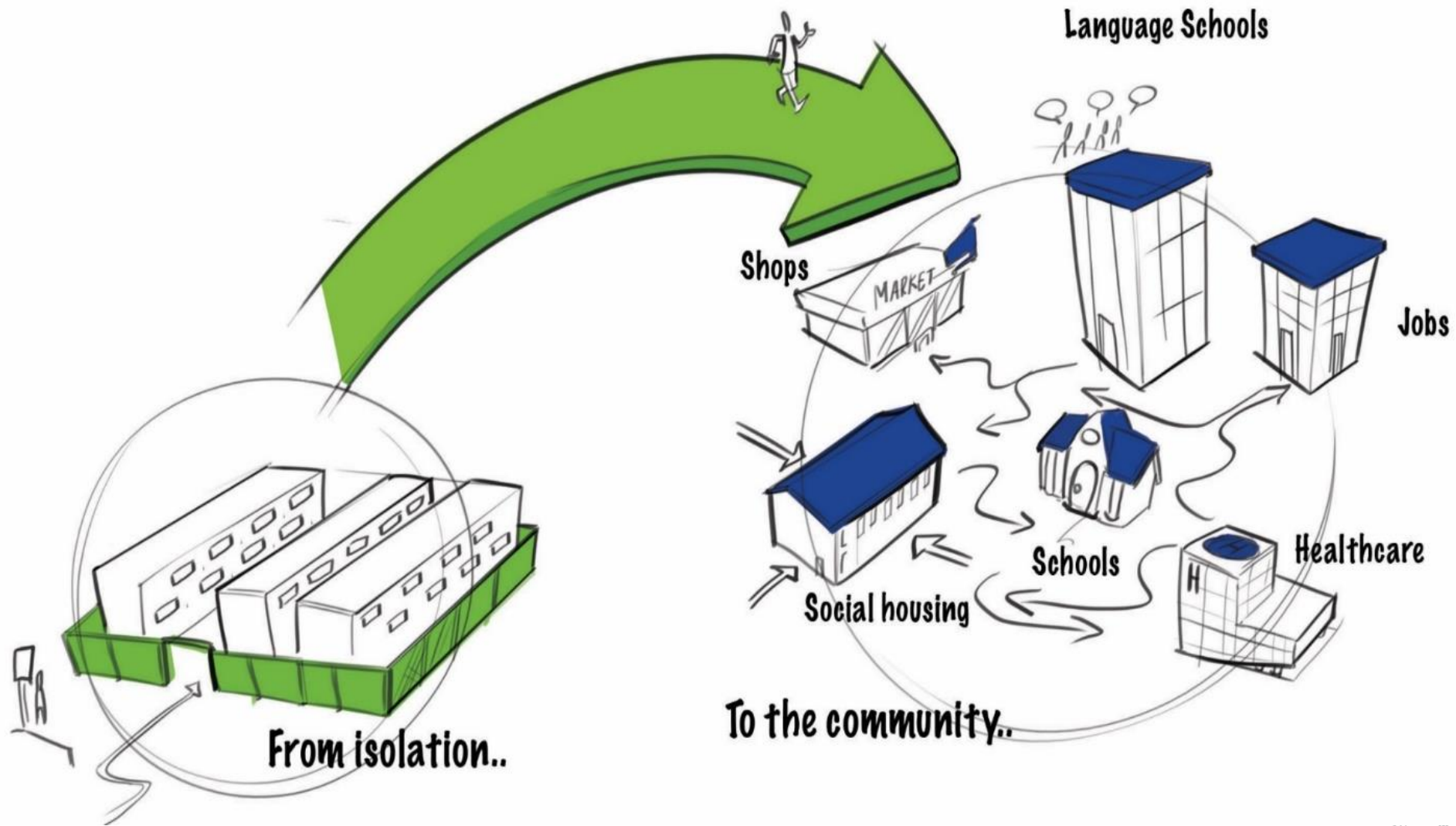
Example of ERDF measures:

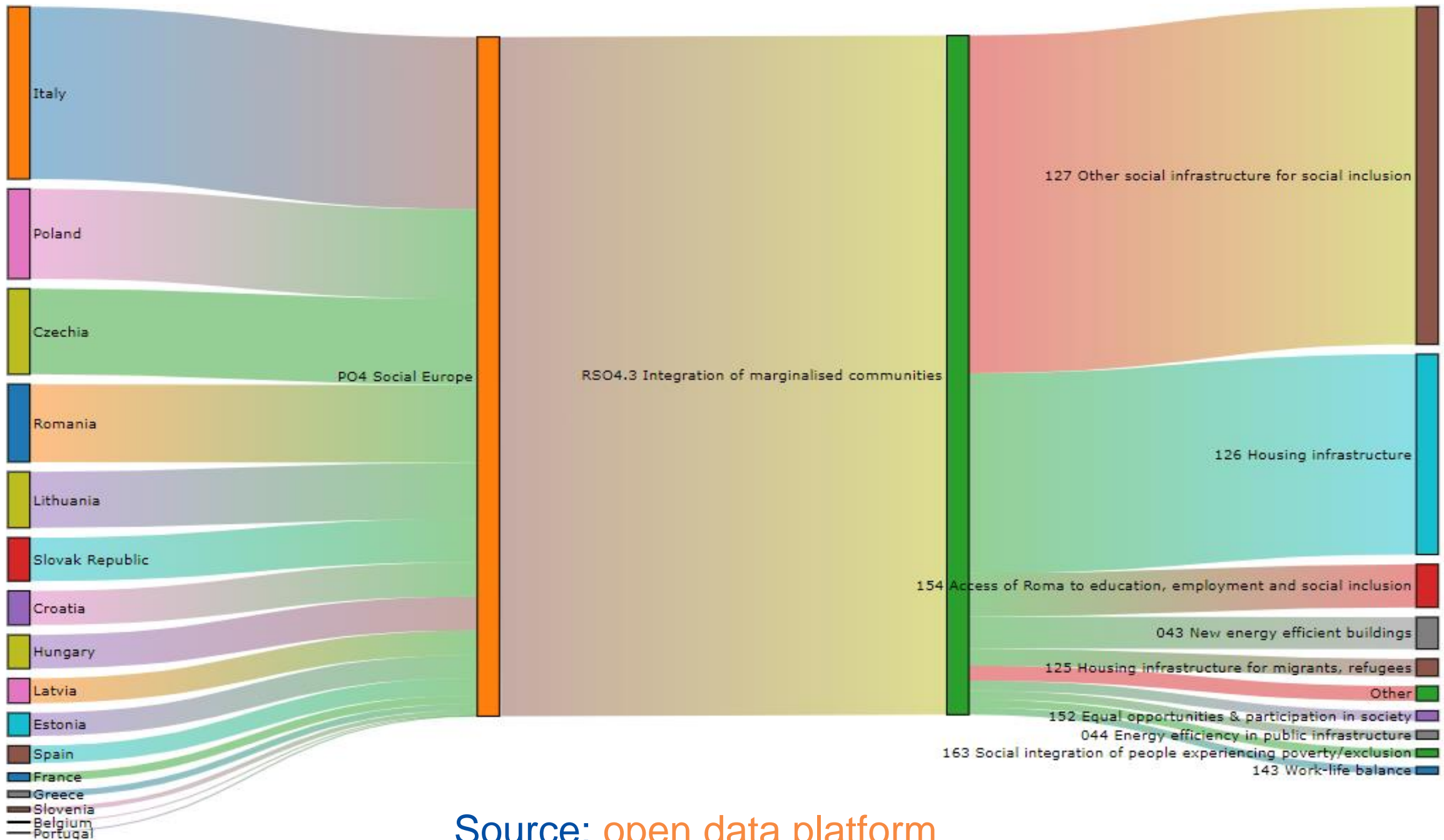
- ❖ **Refurbishing/building/purchasing of social housing** in the mainstream community / non-segregated areas, including extending the stock of available social housing through renting of premises (also in the scope of desegregation measures), i.e. **individual apartments for families, individuals accompanied** by complementary measures to facilitate access to mainstream services in education, employment, health- and social- care; this also refers to accessible social housing, adapted to the needs of persons with disabilities, older people etc.
- ❖ **Extension of capacities/building of mainstream non-segregated** kindergartens, schools, afternoon schooling, VET, **labour market institutions, health-, social- and child-care facilities** etc.
- ❖ **Accessible transport** means for people in marginalized communities/vulnerable groups, including persons with disabilities, older persons to access the mainstream services above
- ❖ Building **non-residential family- and community-based services** for people with disabilities, children deprived of parental care, older persons (individual apartments, equipment, accessible transport etc.)
- ❖ **Training infrastructure and/or equipment** targeting the personnel of the family- and community-based services
- ❖ **Prevention of institutionalization facilities** (mainstream and inclusive community centers, family centres, accommodation for homeless)

NB! Should **not lead to further segregation/isolation** of marginalized groups and **building parallel services**; **ERDF & ESF+ complementarity!**

COUNCIL RECOMMENDATION on access to affordable high-quality long-term care ([link](#))

Recital (24) The Union provides many funding opportunities for long-term care, targeting different investment priorities in accordance with the specific regulations of the various funding programmes, which include the **European Regional Development Fund (with priority focus on non-residential family- and community-based services)**, the European Social Fund plus, and its Employment and Social Innovation strand, the Just Transition Fund, Horizon Europe, EU4Health Programme, the Digital Europe Programme, technical support to improve the capacity of national authorities to design, develop and implement reforms through the Technical Support Instrument and the Recovery and Resilience Facility for eligible reforms and investments in the context of the recovery from the COVID-19 pandemic.





Source: [open data platform](#)

Relevant thematic enabling conditions (TEC) under Policy Objective 4 (CPR) – 2 of 2

TEC 4.6: Strategic policy framework for health and **long-term** care.

A national or regional strategic policy framework for health is in place that contains:

1. **Mapping of health and long-term care needs**, including in terms of medical and care staff, to ensure sustainable and coordinated measures.
2. Measures to ensure the **efficiency, sustainability, accessibility and affordability of health and long-term care services**, including a specific focus on individuals excluded from the health and long-term care systems, including those who are hardest to reach.
3. Measures to promote **community and family-based services through deinstitutionalisation, including prevention and primary care, home-care and community-based services.**

PO4 'A more social and inclusive Europe, implementing the European Pillar of Social Rights'

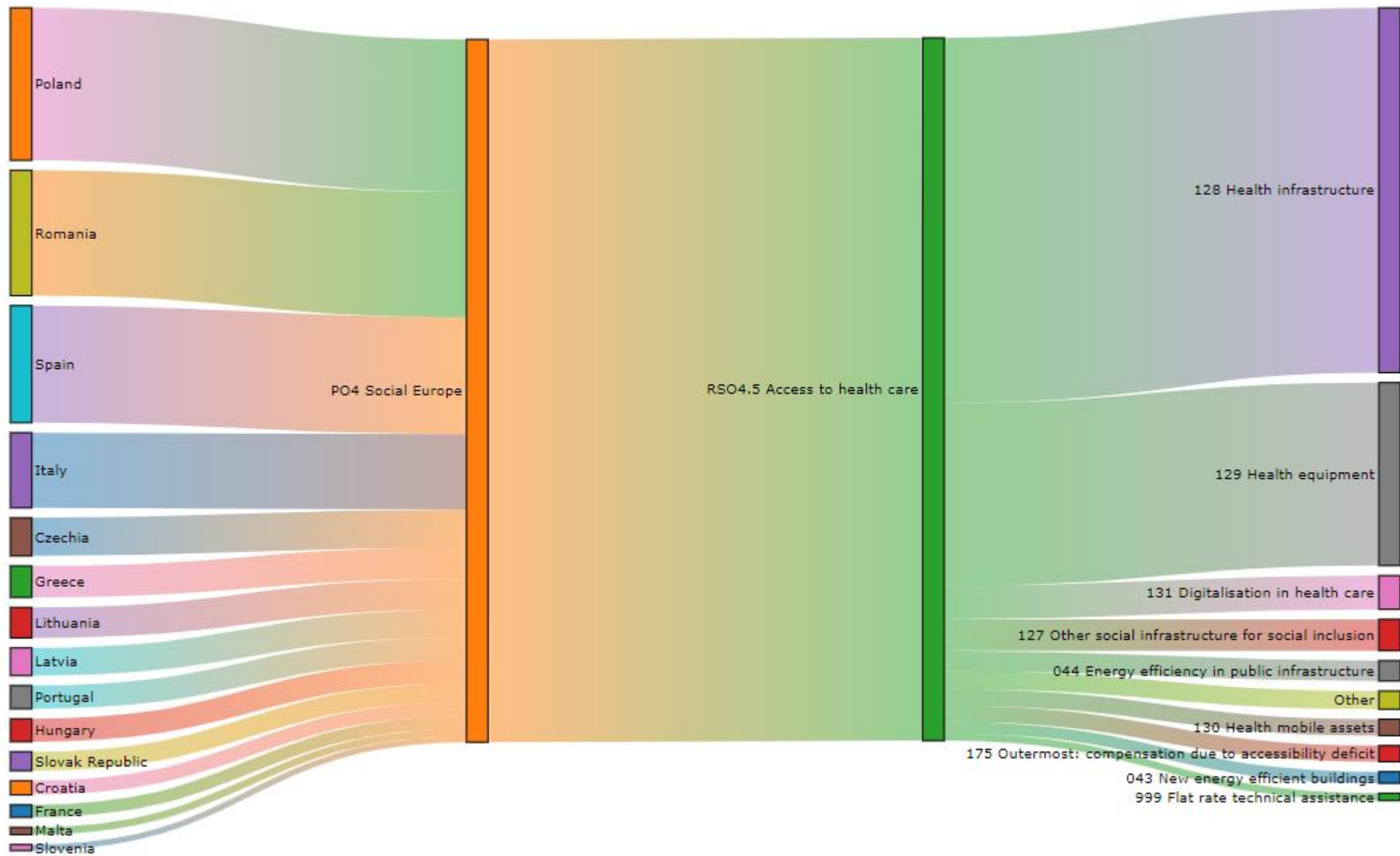
Health care and long-term care

ERDF Specific objective 4.5. ensuring equal access to health care and fostering resilience of health systems, including primary care, and promoting the transition from institutional to family-based and community-based care

- Stronger public health, increased use of digital tools and re-organised care models with the overall objective of making health systems more effective accessible and resilient

Example of actions (non-exhaustive list):

- **Health prevention** facilities and equipment,
- **Home care and community-based services;**
- **Primary healthcare** (e.g. facilities for general practitioners, nurses), **secondary healthcare** (e.g. facilities for specialists, outpatient clinic), **tertiary healthcare** (e.g. acute and long-term care hospitals, emergencies services), including **measures to foster resilience of healthcare;**
- In the scope of **digitalization of health services**: e-health, mobile health, telehealth, public information systems and telemedicine.
- **Cooperation (transnational and/or cross border) activities** to enhance resilience and effectiveness of healthcare service provision



Considerations for investments

- All **social and health care infrastructure measures in any policy objectives** must respond to **investment gaps** and be based on the **outcome of individual needs assessments and infrastructure and service mapping**. The individual needs assessment need to include the options, that are in line with the United Nations Convention on the Rights of Persons with Disabilities (UNCRPD) and that persons concerned were offered and an overview of what they opted for. Priority should be given to invest in the creation of the preferred options.
- The mapping will be based on an **overview of the current number of residential institutions** (large or small scale, including community-based residential facilities), **non-residential family- and community-based services** taking account territorial inequalities and demographic challenges.
- All these investments in social and health care infrastructure must be fully in line with the **requirements of the UNCRPD, including General Comment 5 and UNCRPD committee concluding observations**, with due respect for **the principles of equality, freedom of choice, the right to independent living, accessibility and, prohibiting all forms of segregation**. In addition, **accessibility** must be ensured in each investment in line with state of the art EU accessibility standards.
- The investments will need to demonstrate compliance with and contribute to the **deinstitutionalisation strategy and relevant EU policy and legal frameworks for upholding human rights obligations** namely the UNCRPD and General Comment No 5, the *European Pillar of Social Rights and Strategy for the Rights of Persons with Disabilities 2021–2030*. No investment will be a step back in the deinstitutionalization strategy of existing institutions or contribute to creation of new settings that are not in full respect with the UNCRPD.
- Following the **partnership principle, independent fundamental rights bodies and human rights organizations will be involved in all the stages of programming, implementation, monitoring, evaluation of investments** in social and health care infrastructure to ensure the respect of the principles of independent living, non-segregation and non-discrimination in line with the UNCRPD and the Charter.

Examples of ERDF investments in the 2014-2020 programming period

Improving wellbeing services for south-eastern Finland's older population

The project introduced a platform and a replicable business model for the development of wellbeing services for the older population of Southern-eastern Finland. After a series of pilot projects reaching out to end users and elderly people, the project utilised the gathered data to develop several effectiveness protocols and health promotion activities, which have been performed and tested in the Active Life Lab. ERDF funding has been essential to adjust the Active Life Lab's infrastructure to respond to the needs of the project's collaborators and users.

Output and Outcome:

- 10 new wellbeing services and 2 education programmes were developed, which are aimed at providing positive, long-term physical benefits for older persons.
- The project's efforts have led to the creation of 12 new jobs at Active Life Lab.

Video

Proximity Mobile Healthcare Units in Algarve, Portugal

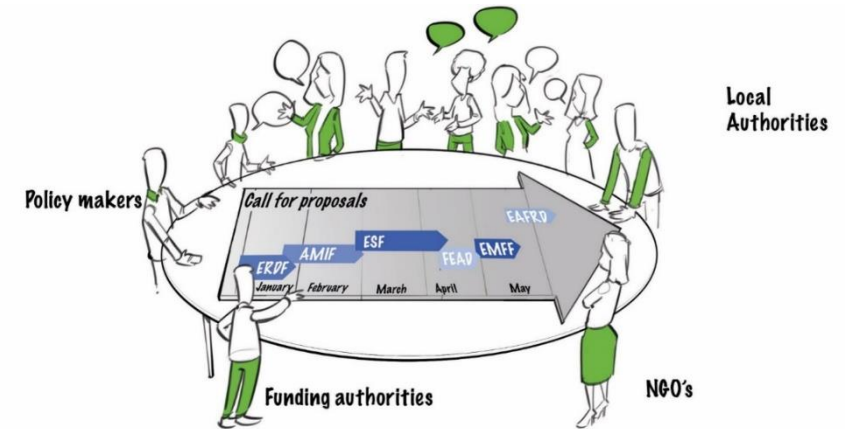
Due to long geographical distances to important urban centres, financial difficulties and lack of adequate transportation to traditional health centres, many in sparsely populated rural areas in the Algarve found themselves isolated from essential primary and emergency care, especially older persons and persons with disabilities. With the help of ERDF funding, proximity mobile healthcare units were introduced to increase the accessibility of preventative care and disease diagnosis and monitoring to reduce inequalities and promote social inclusion in the targeted areas.

The expansion of the existing healthcare equipment in the form of these proximity mobile units permits to address the general needs and to guarantee healthcare to the population that normally lives far from the regular health centres.

Output and Outcome:

- 10 mobile units covering several municipalities in the Algarve region.
- 15.000 users benefiting from services.

Useful links



- Final texts of 2021-2027 CPR, ERDF, ESF+ regulations: <https://eur-lex.europa.eu/legal-content/EN/TXT/PDF/?uri=OJ:L:2021:231:FULL&from=EN>
- [How to access EU funds?](#)
- **ERDF** ([website](#)) support [in your country](#); [project examples](#); [publications](#); **[programmes](#)**
- Shared management → call for proposals are published by [managing authorities](#)
- [Open Data Platform](#) (by theme, country, fund)



European
Commission

Thank you!