



Results of the Call for Proposals 2012

**Giovanni
Nicoletti
NFP - Italy**



NATIONAL INFORMATION DAY 2013 European Health Programme (2008-2013) - Call 2013

Results Call 2012

Giovanni Nicoletti - Italian NFP



Proposals received

Instruments	2008	2009	2010	2011	2012	Total
Projects	153	183	115	38	88	577
Conferences	43	44	27	35	42	191
Operating Grants	26	26	25	35	45	157
Joint Actions	2	4	10	5	5	26
Total	224	257	177	113	180	951

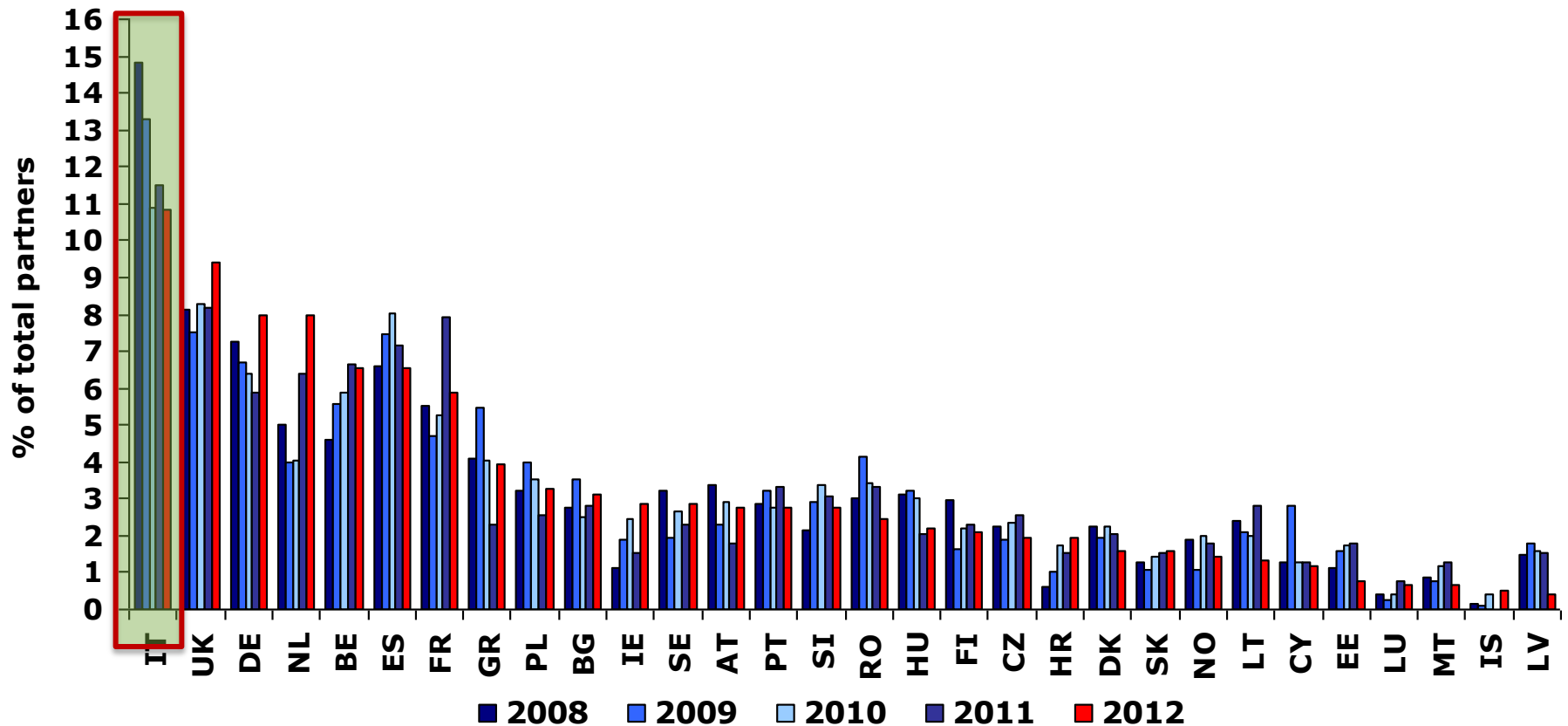
Summary of the evaluation result

Instruments	Number of proposals			Co-funding amount		
	Received	Selected	Reserve list	Selected	Reserve list	Total
Projects	88	16	5	13 312 116	4 540 962	17 853 078
Conferences	42	7	2	599 097	90 000	689 097
Operating Grants	45	19	2	4 330 590	273 754	4 604 344
Joint Actions	5	5		8 941 660		8 941 660
Total	180	47	9	27 183 463	4 904 716	32 088 179



European
Commission

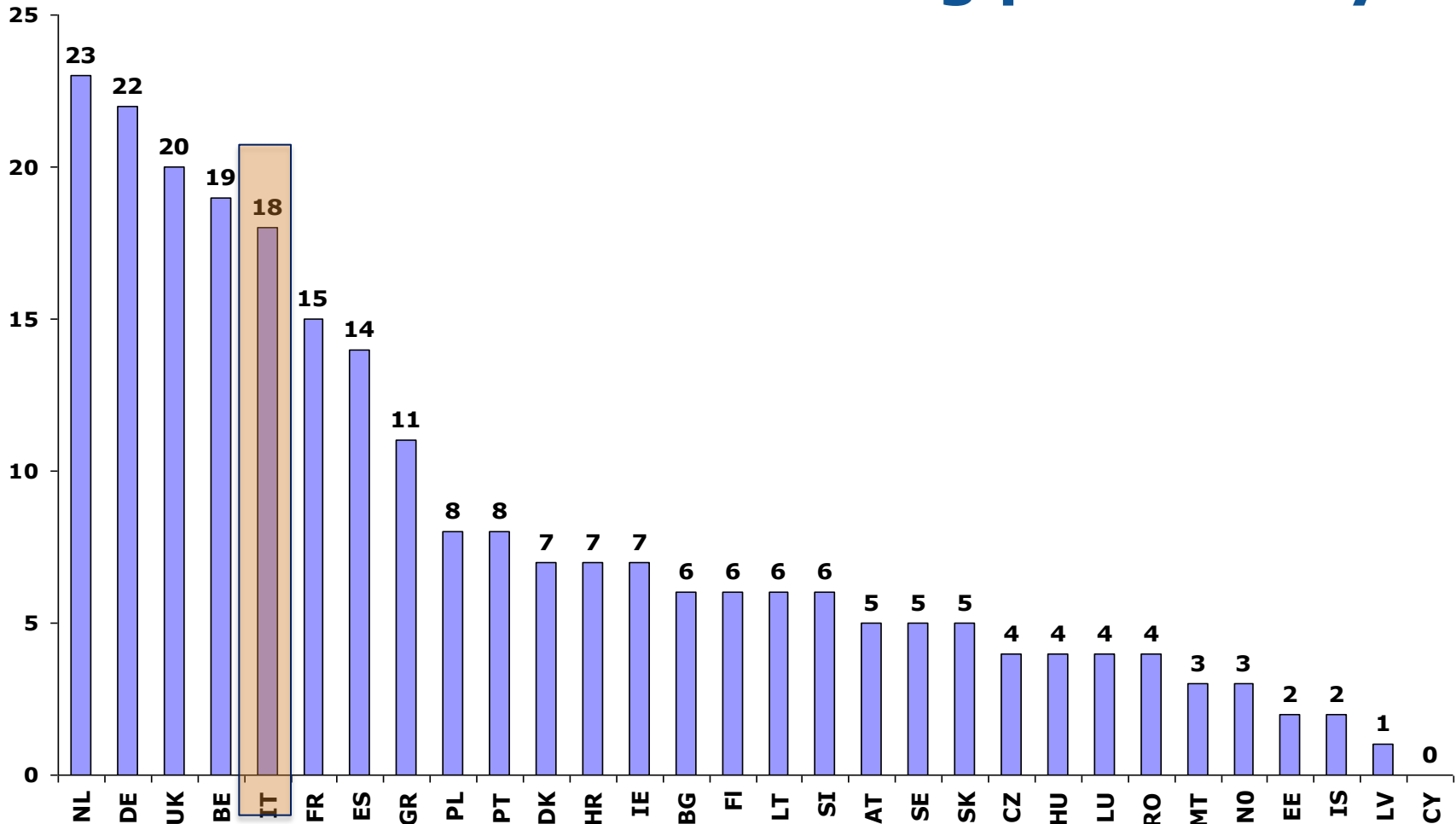
Country participation





European
Commission

Recommendation for funding per country





European
Commission

Recommendation for funding per country (all partners) and per financing mechanism

Country	AT	BE	BG	CY	CZ	DE	DK	EE	ES	FI	FR	GR	HR	HU	IE	IS	IT	LT	LU	LV	MT	NO	NL	PL	PT	RO	SE	SI	SK	UK	Total
Joint Actions	1	4	4		1	6	1	2	4	2	3	4	3	3	4	2	5	4	1	1	3	1	4	4	3	3	2	4	5	5	89
Projects	4	9	2		3	16	4		9	3	10	7	4	1	3		11	2				2	12	4	5	1	3	2		13	130
Operating Grants		5					1		1		2						2		2				5							1	19
Conferences		1					1			1									1				2							1	7
Total	5	19	6	0	4	22	7	2	14	6	15	11	7	4	7	2	18	6	4	1	3	3	23	8	8	4	5	6	5	20	245



European
Commission

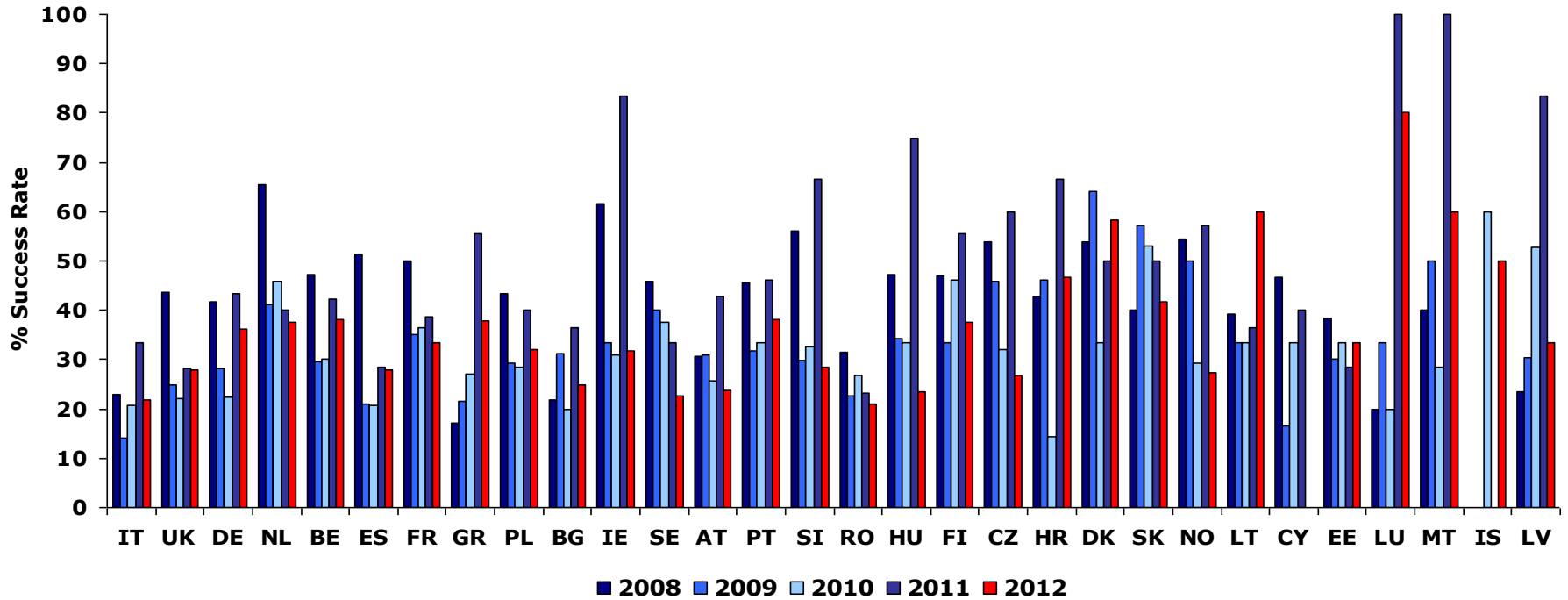
Country participation

Country	AT	BE	BG	CY	CZ	DE	DK	EE	ES	FI	FR	GR	HR	HU	IE	IS	IT	LT	LU	LV	MT	NL	NO	PL	PT	RO	SE	SI	SK	UK	Total
2012	21	50	24	9	15	61	12	6	50	16	45	30	15	17	22	4	83	10	5	3	5	61	11	25	21	19	22	21	12	72	767
%	2,74	6,52	3,1	1,2	2	8	1,6	0,8	6,5	2,1	5,9	3,9	2	2,2	2,9	0,5	10,82	1,3	0,7	0,4	0,7	8	1,4	3,3	2,7	2,5	2,9	2,7	1,56	9,39	100
2011	7	26	11	5	10	23	8	7	28	9	31	9	6	8	6	0	45	11	3	6	5	25	7	10	13	13	9	12	6	32	391
%	1,79	6,65	2,81	1,28	2,56	5,88	2,05	1,79	7,16	2,30	7,93	2,30	1,53	2,05	1,53	0,00	11,51	2,81	0,77	1,53	1,28	6,39	1,79	2,56	3,32	3,32	2,30	3,07	1,53	8,18	100
2010	35	70	30	15	28	76	27	21	96	26	63	48	21	36	29	5	130	24	5	19	14	48	24	42	33	41	32	40	17	99	1 194
%	2,93	5,86	2,51	1,26	2,35	6,37	2,26	1,76	8,04	2,18	5,28	4,02	1,76	3,02	2,43	0,42	10,89	2,01	0,42	1,59	1,17	4,02	2,01	3,52	2,76	3,43	2,68	3,35	1,42	8,29	100
2009	29	71	45	36	24	85	25	20	95	21	60	70	13	41	24	1	169	27	3	23	10	51	14	51	41	53	25	37	14	96	1 274
%	2,28	5,57	3,53	2,83	1,88	6,67	1,96	1,57	7,46	1,65	4,71	5,49	1,02	3,22	1,88	0,08	13,27	2,12	0,24	1,81	0,78	4,00	1,10	4,00	3,22	4,16	1,96	2,90	1,10	7,54	100
2008	39	53	32	15	26	84	26	13	76	34	64	47	7	36	13	2	171	28	5	17	10	58	22	37	33	35	37	25	15	94	1 154
%	3,38	4,59	2,77	1,30	2,25	7,28	2,25	1,13	6,59	2,95	5,55	4,07	0,61	3,12	1,13	0,17	14,82	2,43	0,43	1,47	0,87	5,03	1,91	3,21	2,86	3,03	3,21	2,17	1,30	8,15	100
Total	131	270	142	80	103	329	98	67	345	106	263	204	62	138	94	12	598	100	21	68	44	243	78	165	141	161	125	135	64	393	4 780
%	2,74	5,65	2,97	1,67	2,15	6,88	2,05	1,40	7,22	2,22	5,50	4,27	1,30	2,89	1,97	0,25	12,51	2,09	0,44	1,42	0,92	5,08	1,63	3,45	2,95	3,37	2,62	2,82	1,34	8,22	100



European
Commission

Country success rate





European
Commission

Country success rate

Country	2012			2011			2010			2009			2008		
	Received	Cofunded	2012-% Rate	Received	Cofunded	2011-% Rate	Received	Cofunded	2010-% Rate	Received	Cofunded	2009-% Rate	Received	Cofunded	2008-% Rate
IT	83	18	21,69	45	15	33,33	130	27	20,77	169	24	14,20	171	39	22,81
UK	72	20	27,78	32	9	28,13	99	22	22,22	96	24	25,00	94	41	43,62
DE	61	22	36,07	23	10	43,48	76	17	22,37	85	24	28,24	84	35	41,67
NL	61	23	37,70	25	10	40,00	48	22	45,83	51	21	41,18	58	38	65,52
BE	50	19	38,00	26	11	42,31	70	21	30,00	71	21	29,58	53	25	47,17
ES	50	14	28,00	28	8	28,57	96	20	20,83	95	20	21,05	76	39	51,32
FR	45	15	33,33	31	12	38,71	63	23	36,51	60	21	35,00	64	32	50,00
GR	29	11	37,93	9	5	55,56	48	13	27,08	70	15	21,43	47	8	17,02
PL	25	8	32,00	10	4	40,00	42	12	28,57	51	15	29,41	37	16	43,24
BG	24	6	25,00	11	4	36,36	30	6	20,00	45	14	31,11	32	7	21,88
IE	22	7	31,82	6	5	83,33	29	9	31,03	24	8	33,33	13	8	61,54
SE	22	5	22,73	9	3	33,33	32	12	37,50	25	10	40,00	37	17	45,95
AT	21	5	23,81	7	3	42,86	35	9	25,71	29	9	31,03	39	12	30,77
PT	21	8	38,10	13	6	46,15	33	11	33,33	41	13	31,71	33	15	45,45
SI	21	6	28,57	12	8	66,67	40	13	32,50	37	11	29,73	25	14	56,00
RO	19	4	21,05	13	3	23,08	41	11	26,83	53	12	22,64	35	11	31,43
HU	17	4	23,53	8	6	75,00	36	12	33,33	41	14	34,15	36	17	47,22
FI	16	6	37,50	9	5	55,56	26	12	46,15	21	7	33,33	34	16	47,06
CZ	15	4	26,67	10	6	60,00	28	9	32,14	24	11	45,83	26	14	53,85
HR	15	7	46,67	6	4	66,67	21	3	14,29	13	6	46,15	7	3	42,86
DK	12	7	58,33	8	4	50,00	27	9	33,33	25	16	64,00	26	14	53,85
SK	12	5	41,67	6	3	50,00	17	9	52,94	14	8	57,14	15	6	40,00
NO	11	3	27,27	7	4	57,14	24	7	29,17	14	7	50,00	22	12	54,55
LT	10	6	60,00	11	4	36,36	24	8	33,33	27	9	33,33	28	11	39,29
CY	9	0	0,00	5	2	40,00	15	5	33,33	36	6	16,67	15	7	46,67
EE	6	2	33,33	7	2	28,57	21	7	33,33	20	6	30,00	13	5	38,46
LU	5	4	80,00	3	3	100,00	5	1	20,00	3	1	33,33	5	1	20,00
MT	5	3	60,00	5	5	100,00	14	4	28,57	10	5	50,00	10	4	40,00
IS	4	2	50,00	0	0	0,00	5	3	60,00	1	0	0,00	2	0	0,00
LV	3	1	33,33	6	5	83,33	19	10	52,63	23	7	30,43	17	4	23,53
Others	1	0	0,00	0	0	0,00	0	0	0,00	0	0	0,00	0,00	0	0,00

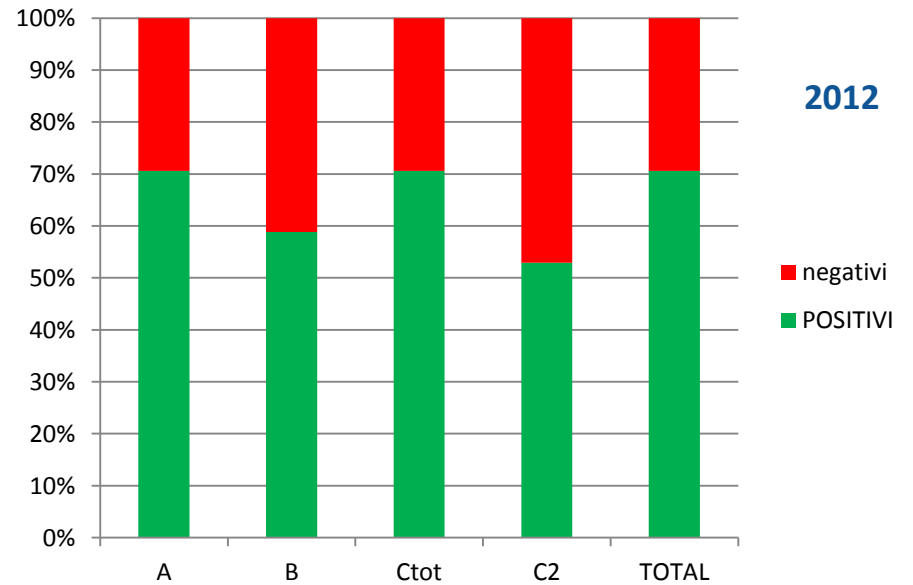
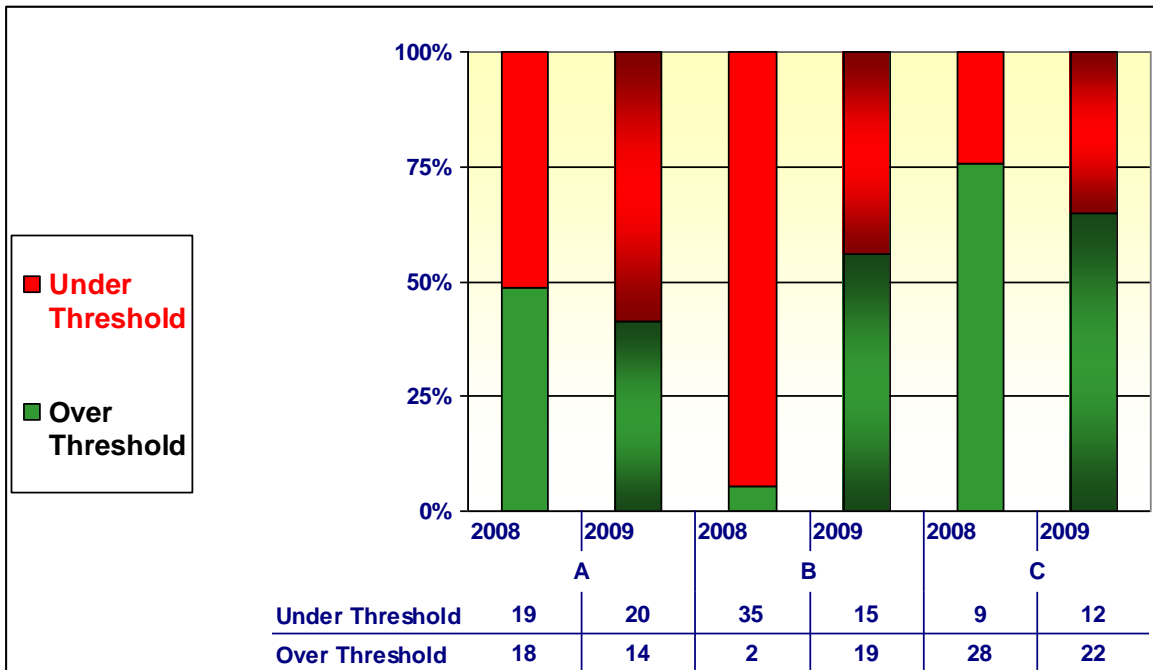
2008	2008	2008-%
Received	Cofunded	Rate
171	39	22,81

2009	2009	2009-%
Received	Cofunded	Rate
169	24	14,20

2010	2010	2010-%
Received	Cofunded	Rate
130	27	20,77

2011	2011	2011-%
Received	Cofunded	Rate
45	15	33,33

Country	2012	2012	2012-%
	Received	Cofunded	Rate
IT	83	18	21,69



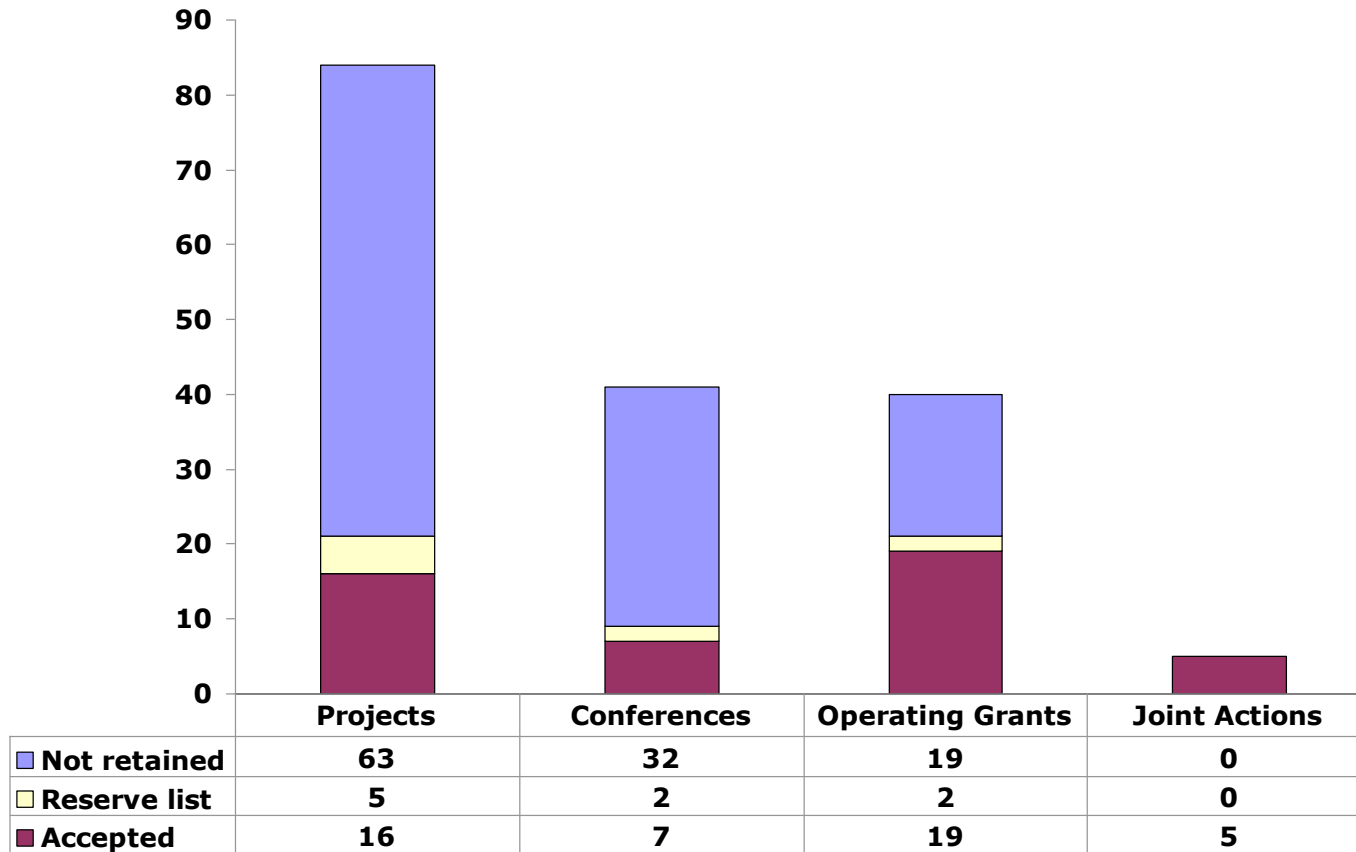
Acceptance for funding per instrument

Instruments		Draft award decision			Total
		Not retained	Accepted	Reserve list	
Projects	Count	63	16	5	84
	%	75%	19%	6%	
Conferences	Count	32	7	2	41
	%	78%	17%	5%	
Operating Grants	Count	19	19	2	40
	%	48%	48%	4%	
Joint Actions	Count	0	5	0	5
	%		100%		
Total	Sum:	114	47	9	170
	%	67%	28%	5%	



European
Commission

Acceptance for funding per instrument



Accepted Reserve list Not retained

Distribution of Projects proposals per strand

STRAND		Draft award decision			Total
		Not retained	Accepted	Reserve list	
HEALTH SECURITY	Count	0	2	0	2
	%	0%	100%	0%	
PROMOTE HEALTH	Count	63	14	5	82
	%	77%	17%	6%	
Total	Sum:	63	16	5	84
	%	75%	19%	6%	

**Thank you for your
attention!**