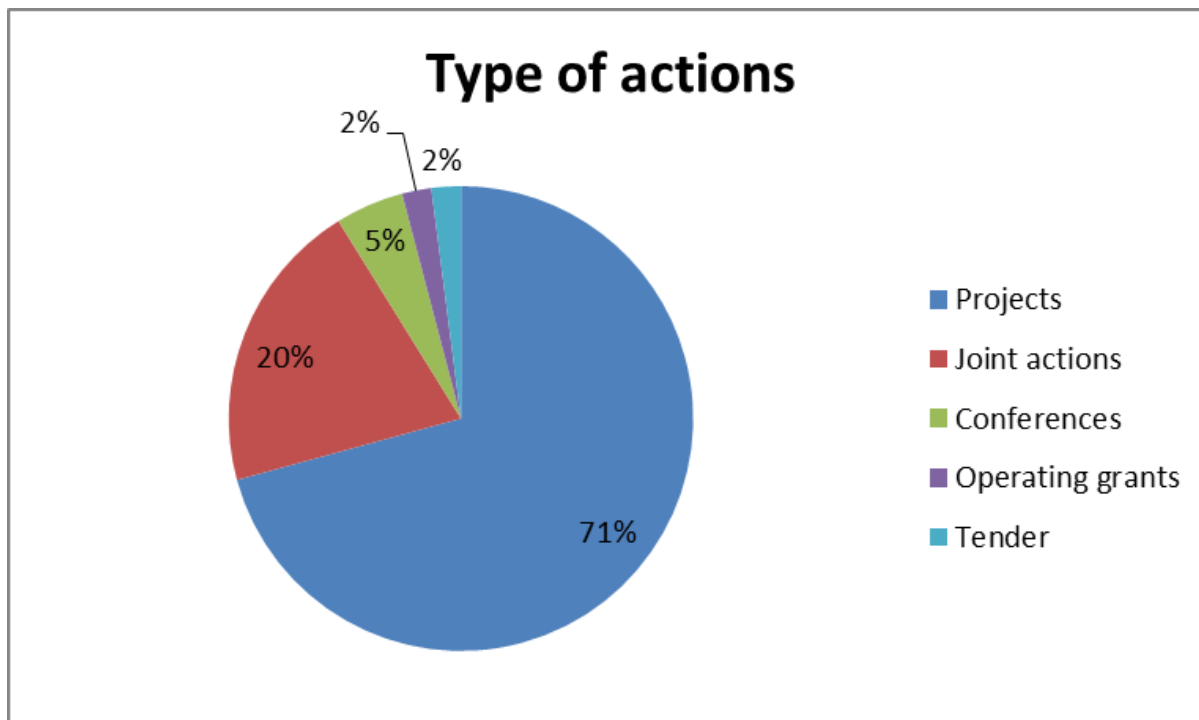
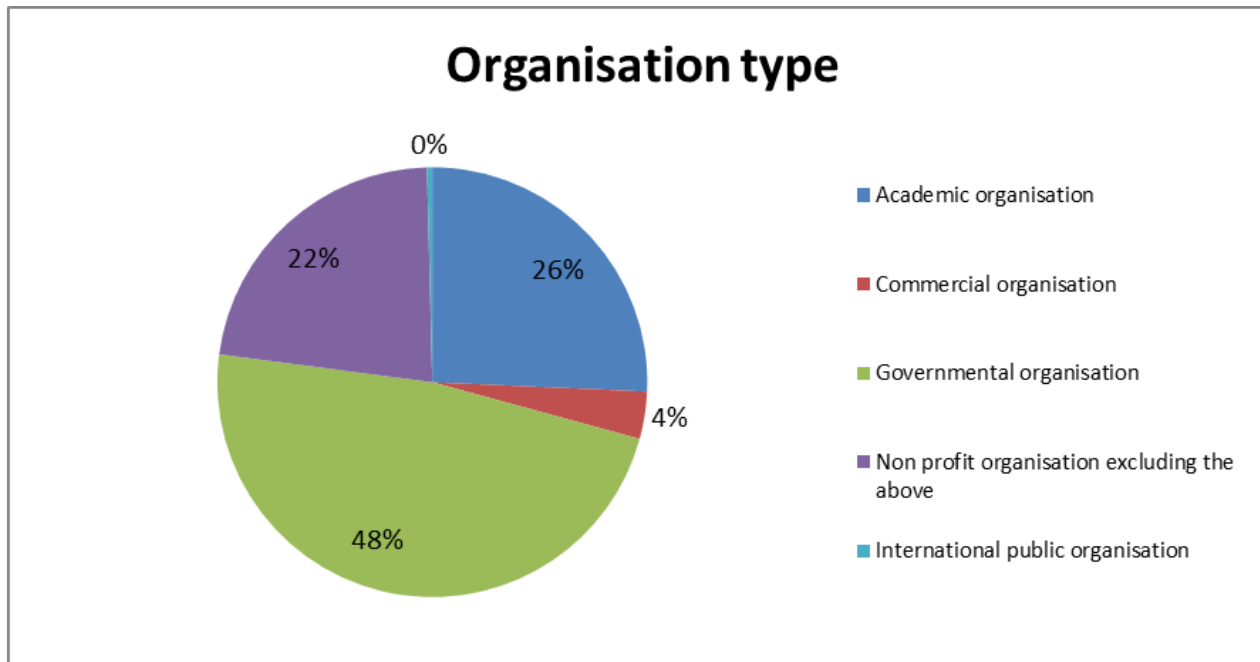


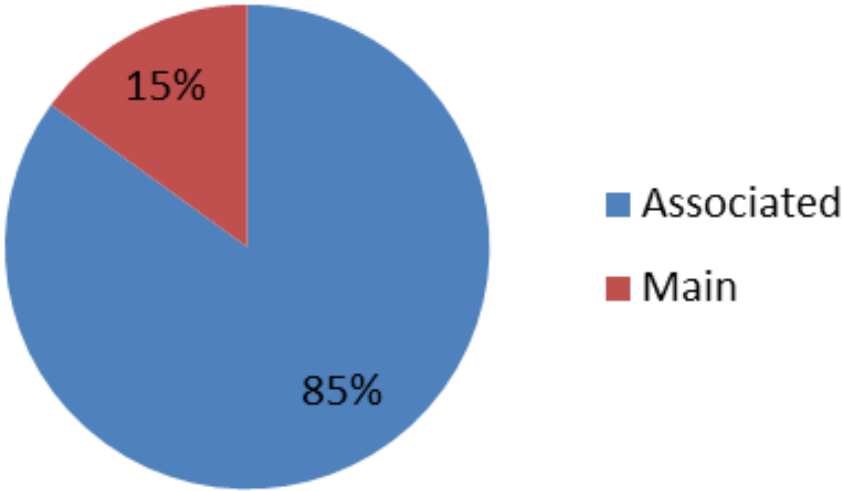
Type of actions	
<i>Projects</i>	104
<i>Joint actions</i>	30
<i>Conferences</i>	7
<i>Operating grants</i>	3
<i>Tender</i>	3



Organisation type	
Academic organisation	65
Commercial organisation	9
Governmental organisation	121
Non profit organisation excluding the above	57
International public organisati	1

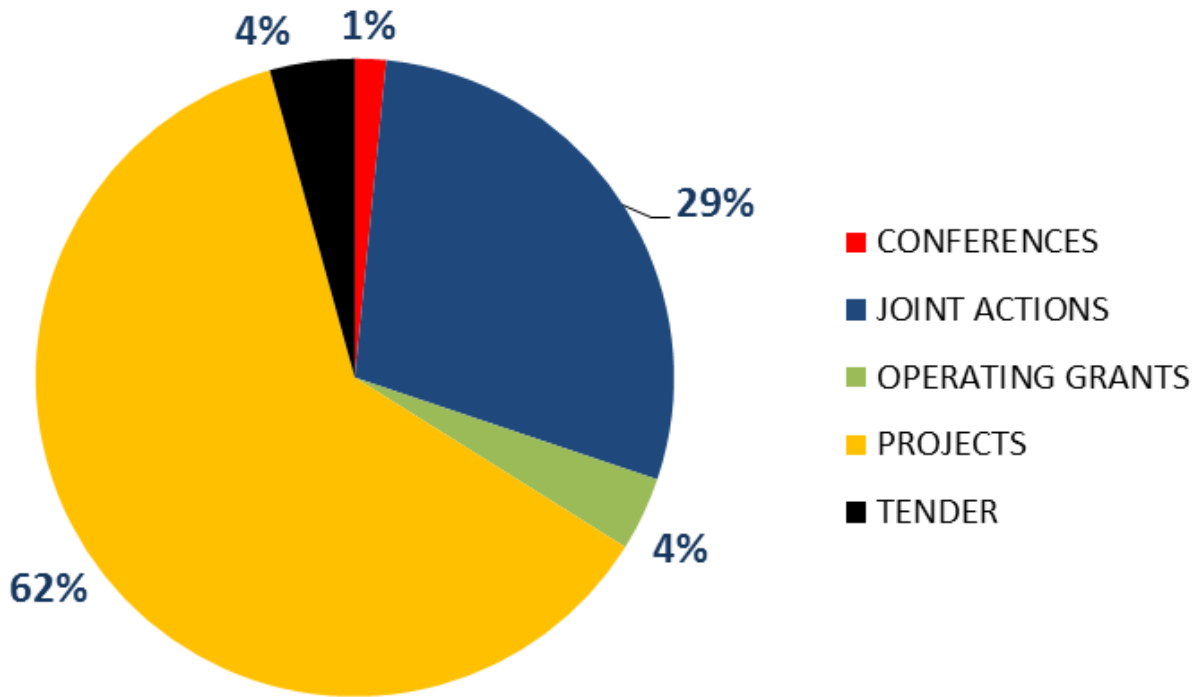


Type of partners



Type of partners	
Associated	215
Main	38

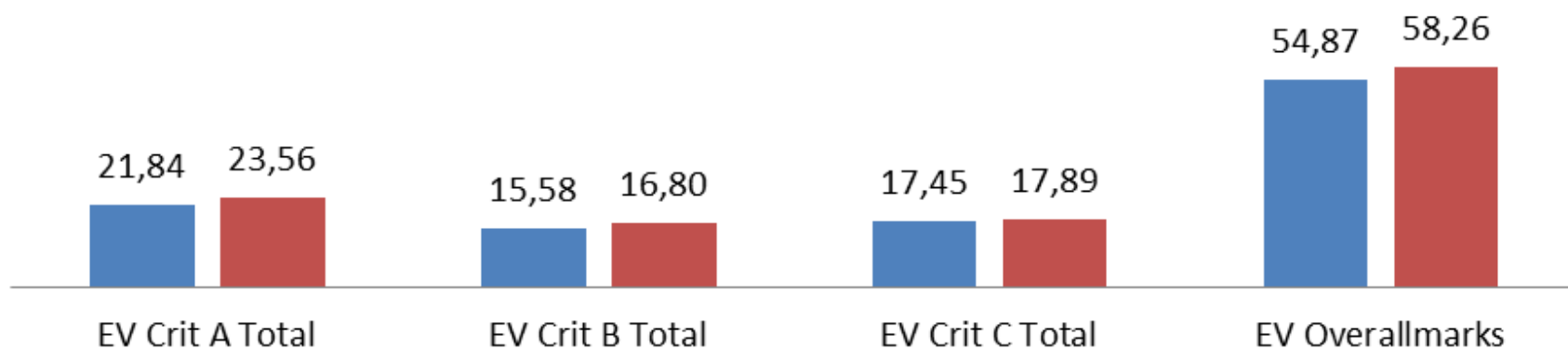
334697,03	CONFERENCES
6.098.380,12	JOINT ACTIONS
797.772,00	OPERATING GRANTS
13176073,93	PROJECTS
916113,16	TENDER
21323036,24	TOTALE



Instruments - funded	2008	2009	2010	2011	2012	2013	Total	ITALIA	
Projects	50	37	20	10	19	11	147	23	15,6%
Conferences	10	12	9	7	7	14	59	7	11,9%
Operating Grants	10	8	9	16	19	22	84	3	3,6%
Joint Actions	2	3	10	5	5	5	30	2	6,7%
Tenders	0	9	6	4	6	11	36	3	8,3%
FWC	0	2	9	0	1	13	25		
DGA	6	6	5	9	4	6	36		
Total	72	71	63	42	57	76	417	38	9,1%

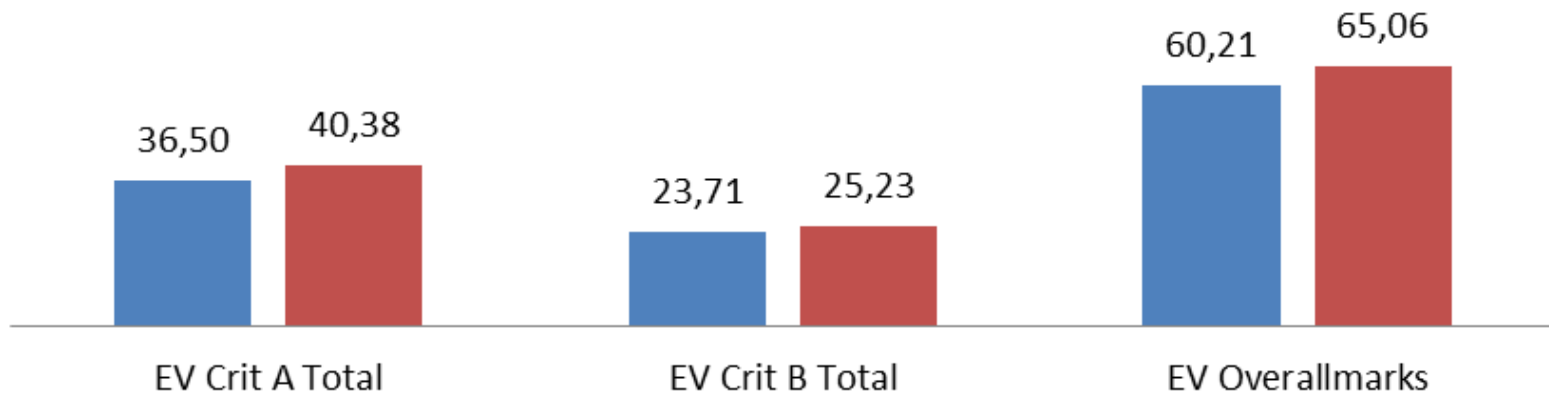
Average Evaluation Grade Projects 2008-2013

■ Country ■ EU-28+EFTA

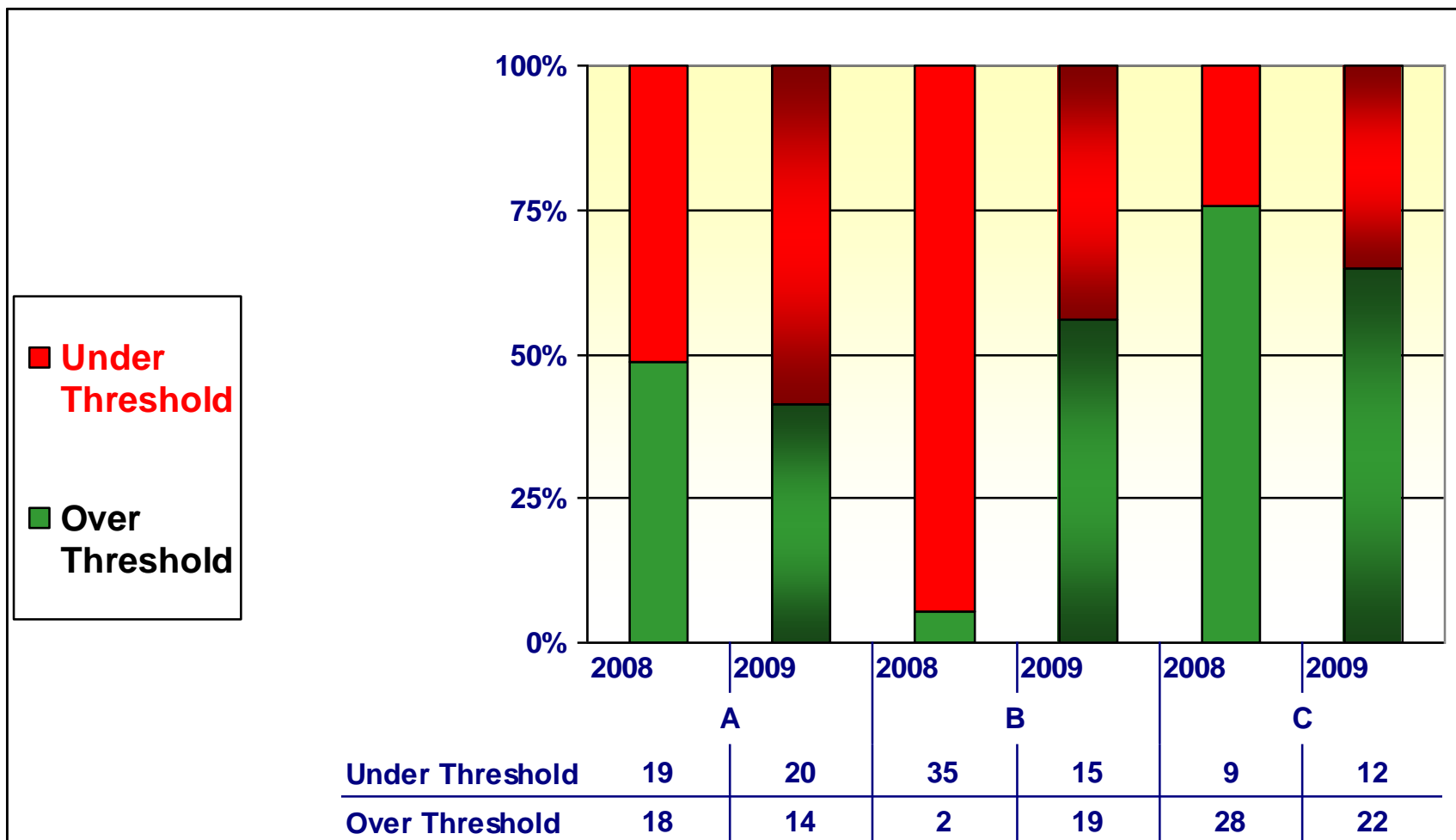


Average Evaluation Grade Conferences 2008-2013

■ Country ■ EU-28+EFTA



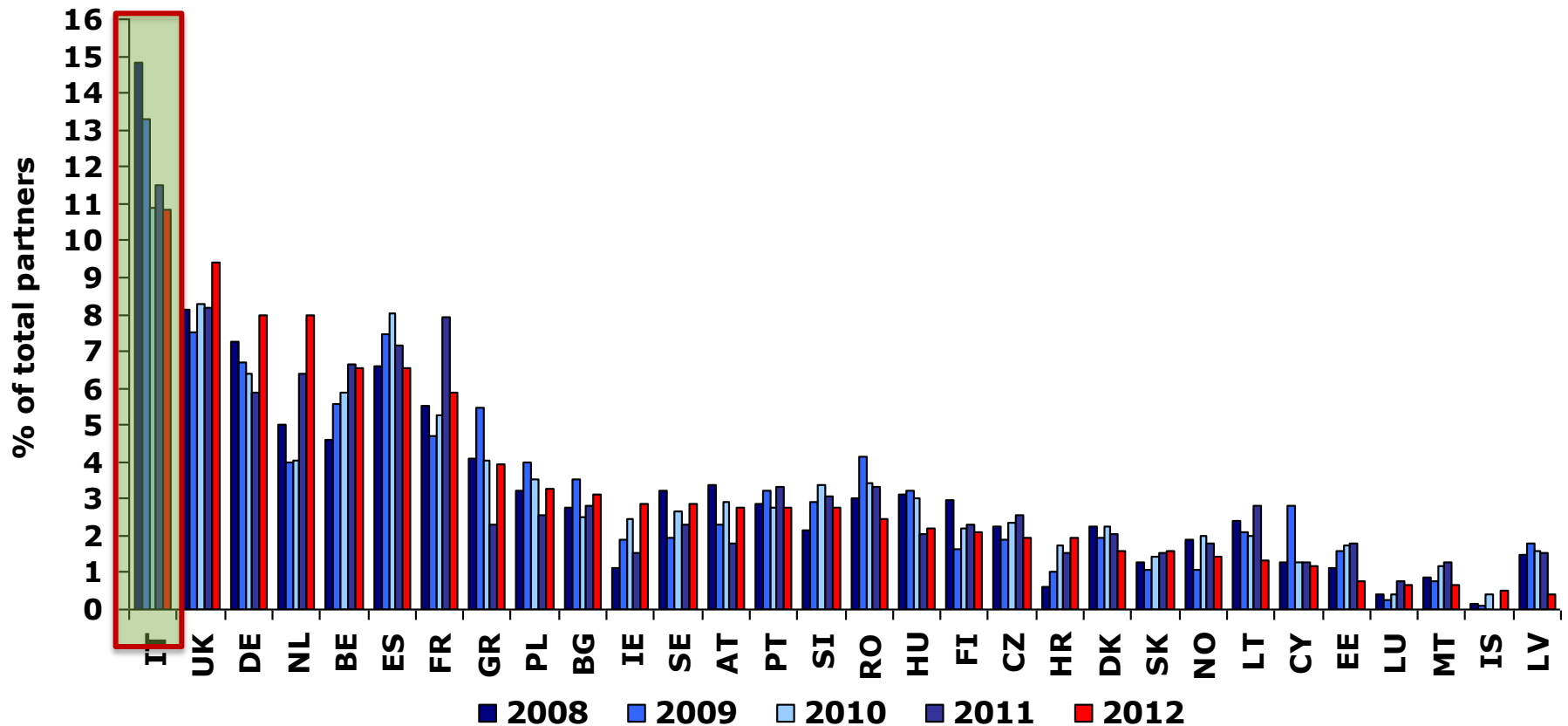
Thresholds overcoming : 2008 vs 2009





European
Commission

Country participation





European
Commission

Country participation

Country	AT	BE	BG	CY	CZ	DE	DK	EE	ES	FI	FR	GR	HR	HU	IE	IS	IT	LT	LU	LV	MT	NL	NO	PL	PT	RO	SE	SI	SK	UK	Total
2012	21	50	24	9	15	61	12	6	50	16	45	30	15	17	22	4	83	10	5	3	5	61	11	25	21	19	22	21	12	72	767
%	2,74	6,52	3,1	1,2	2	8	1,6	0,8	6,5	2,1	5,9	3,9	2	2,2	2,9	0,5	10,82	1,3	0,7	0,4	0,7	8	1,4	3,3	2,7	2,5	2,9	2,7	1,56	9,39	100
2011	7	26	11	5	10	23	8	7	28	9	31	9	6	8	6	0	45	11	3	6	5	25	7	10	13	13	9	12	6	32	391
%	1,79	6,65	2,81	1,28	2,56	5,88	2,05	1,79	7,16	2,30	7,93	2,30	1,53	2,05	1,53	0,00	11,51	2,81	0,77	1,53	1,28	6,39	1,79	2,56	3,32	3,32	2,30	3,07	1,53	8,18	100
2010	35	70	30	15	28	76	27	21	96	26	63	48	21	36	29	5	130	24	5	19	14	48	24	42	33	41	32	40	17	99	1 194
%	2,93	5,86	2,51	1,26	2,35	6,37	2,26	1,76	8,04	2,18	5,28	4,02	1,76	3,02	2,43	0,42	10,89	2,01	0,42	1,59	1,17	4,02	2,01	3,52	2,76	3,43	2,68	3,35	1,42	8,29	100
2009	29	71	45	36	24	85	25	20	95	21	60	70	13	41	24	1	169	27	3	23	10	51	14	51	41	53	25	37	14	96	1 274
%	2,28	5,57	3,53	2,83	1,88	6,67	1,96	1,57	7,46	1,65	4,71	5,49	1,02	3,22	1,88	0,08	13,27	2,12	0,24	1,81	0,78	4,00	1,10	4,00	3,22	4,16	1,96	2,90	1,10	7,54	100
2008	39	53	32	15	26	84	26	13	76	34	64	47	7	36	13	2	171	28	5	17	10	58	22	37	33	35	37	25	15	94	1 154
%	3,38	4,59	2,77	1,30	2,25	7,28	2,25	1,13	6,59	2,95	5,55	4,07	0,61	3,12	1,13	0,17	14,82	2,43	0,43	1,47	0,87	5,03	1,91	3,21	2,86	3,03	3,21	2,17	1,30	8,15	100
Total	131	270	142	80	103	329	98	67	345	106	263	204	62	138	94	12	598	100	21	68	44	243	78	165	141	161	125	135	64	393	4 780
%	2,74	5,65	2,97	1,67	2,15	6,88	2,05	1,40	7,22	2,22	5,50	4,27	1,30	2,89	1,97	0,25	12,51	2,09	0,44	1,42	0,92	5,08	1,63	3,45	2,95	3,37	2,62	2,82	1,34	8,22	100



European
Commission

Country success rate

