



**EuroHealthNet**

[www.eurohealthnet.eu](http://www.eurohealthnet.eu)

# The European Union perspective for health 2014 onwards

*Clive Needle*

[www.eurohealthnet.eu](http://www.eurohealthnet.eu)

# EuroHealthNet

For a healthier Europe between and within countries



Over 40 participants  
across Europe



## MEMBERS

AUSTRIA	Austrian Health Promotion Foundation
BELGIUM	Flemish Institute for Health Promotion and Disease Prevention (VIgeZ) Erasmus University College
CZECH REPUBLIC	National Institute of Public Health
DENMARK	National Board of Health
ENGLAND	Department of Health Kent & Medway NHS North West Health Office
ESTONIA	National Institute for Health Development
FRANCE	National Institute for Prevention and Health Education (INPES)
FINLAND	Finnish Society for Social and Health (SOSTE) National Institute for Health and Welfare (THL)
GERMANY	Federal Centre for Health Education (BZgA)
GREECE	Institute of Preventive Medicine, Environmental & Occupational Health Prolepsis
HUNGARY	Hungarian National Institute for Health Development (OEFI)
IRELAND	Institute of Public Health
ITALY	Veneto Region
LATVIA	Centre for Disease Prevention and Control
NETHERLANDS	Netherlands Institute Public Health and the Environment (RIVM) Dutch Institute for Healthcare Improvement (CBO)
NORWAY	Norwegian Directorate of Health
POLAND	National Institute of Hygiene – Public Health Research Institute
SCOTLAND	NHS Health Scotland
SLOVENIA	National Institute of Public Health Institute of Public Health Murska Sobota
SPAIN	Universidad de La Laguna
SWEDEN	Stockholm County Council (SLL)
WALES	Public Health Wales

## COLLABORATING PARTNERS

**BELGIUM** Health Promotion Research Group Ghent University, Interface Demography at the Department of Sociology Free University of Brussels **CROATIA** National Institute of Public Health **CZECH REPUBLIC** Public Health Authority of the Olomouc Region **IRELAND** Institute of Public Health **MONTENEGRO** Institute of Public Health **PORTUGAL** Research Centre on Child Studies, University of Minho **ROMANIA** National Institute of Public Health, Regional Institute of Public Health Iasi **SWEDEN** Swedish Association of Local Authorities and Regions **SWITZERLAND** Global Health Equity Foundation **UNITED KINGDOM** Health Action Partnership International (HAPI), East of England Brussels Office, Department of Mental Health Social Work and Inter-Professional Studies at Middlesex University

Tackling inequalities across policies and practices

20<sup>th</sup> May 2013

[www.eurohealthnet.eu](http://www.eurohealthnet.eu)

# ACTIVITIES OF EUROHEALTHNET





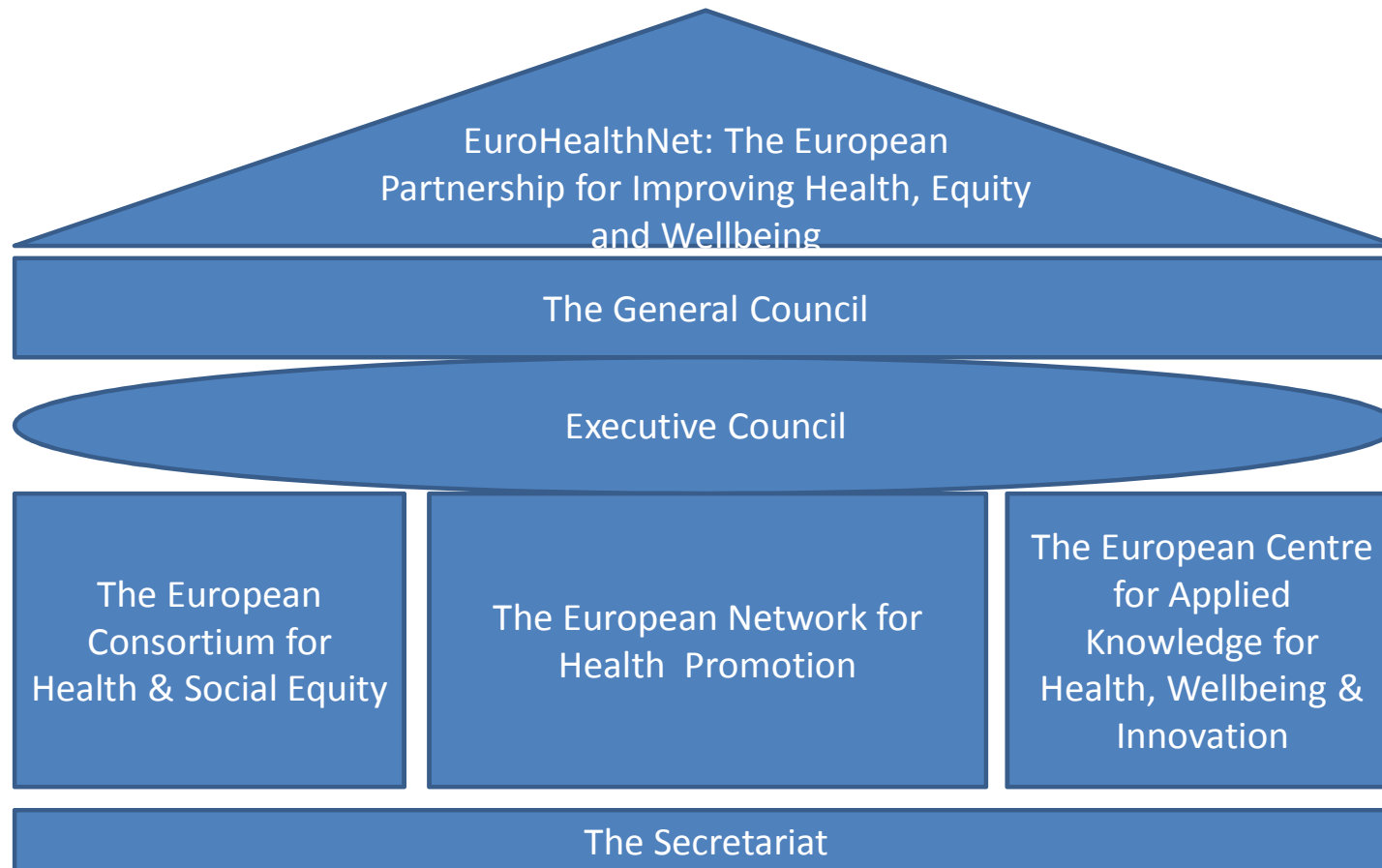
## **EU Report on health inequalities 2013**

- Action from 2010 Communication “Solidarity in Health”
- EU level analysis of HI in 27 states
- Review of policy responses to HI
- Policy recommendations for future action
- Links with WHO reviews

- [www.eurohealthnet.eu](http://www.eurohealthnet.eu)
- [www.health-inequalities.eu](http://www.health-inequalities.eu)
- [www.health-gradient.eu](http://www.health-gradient.eu)
- [www.equitychannel.net](http://www.equitychannel.net)
- [www.sustainable-lifestyles.eu](http://www.sustainable-lifestyles.eu)
- [www.healthyageing.eu](http://www.healthyageing.eu)

**Sources of help**  
**+ New from June 2013 see**  
**[www.healthpromotion.eu](http://www.healthpromotion.eu)**

# EuroHealthNet 2014 - 2020



# EuroHealthNet

For a healthier Europe between and within countries



"Basically, we're looking for cost-effective, efficient tried and true ideas that look like bold innovation thinking while not scaring the poop out of everyone."



# Health in the MFF 2014-2020

## THE CHALLENGES

- increasingly challenging **demographic context** threatening the **sustainability of health systems**
- **fragile economic recovery** limiting the resources available for **investment in healthcare**
- increase of **health inequalities** between/within Member States
- increase in **chronic diseases** prevalence

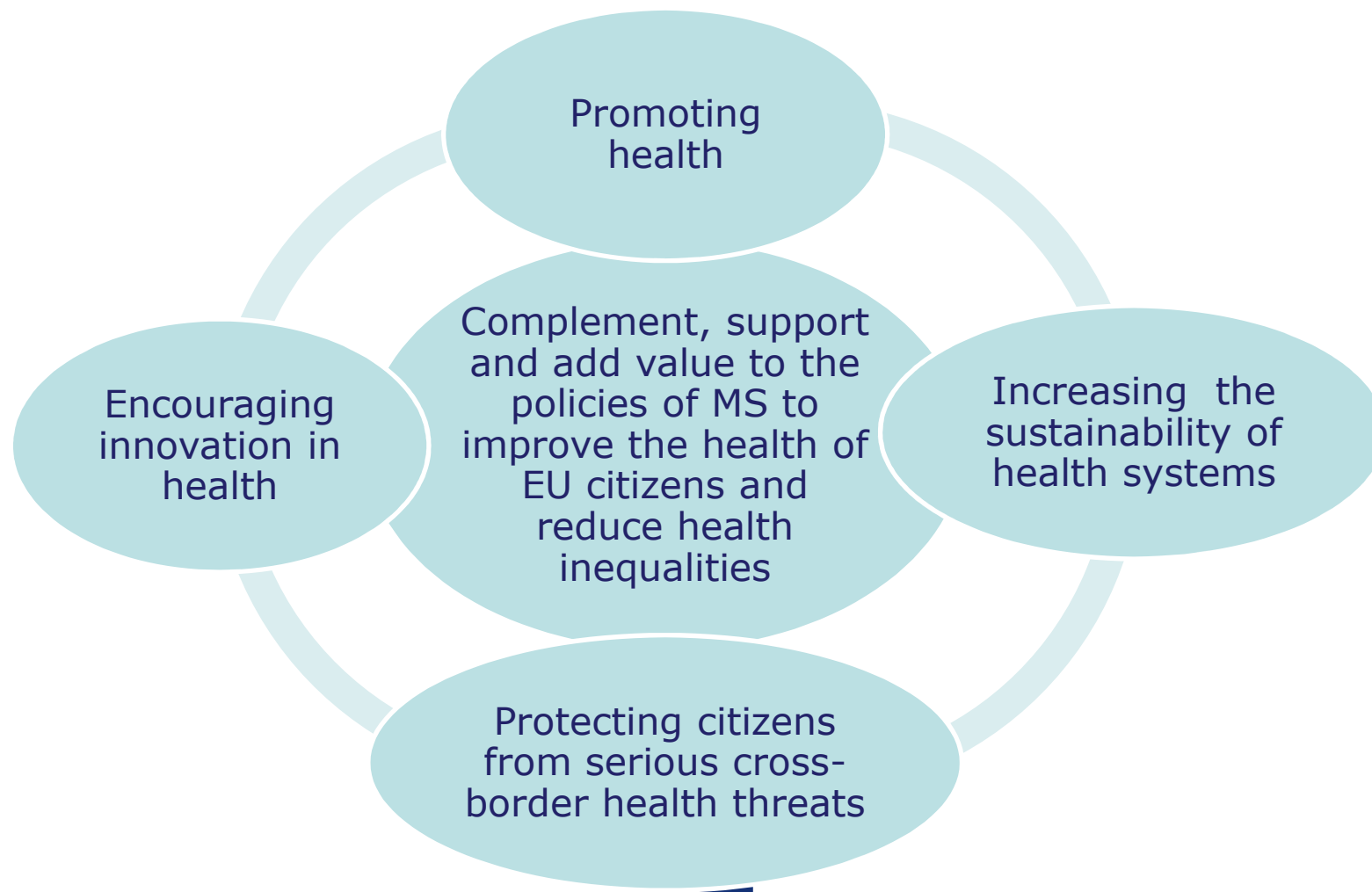
- **pandemics and emerging cross-border health threats**
- rapid development of **health technologies**

### → Commission proposal for the Health Programme

- **Adopted in Nov 2011**
- **The only programme dedicated to health**
- **7 years, proposed budget of € 446 million**



# The scope of the Programme





~ Budget ?

## Health, demographic change & wellbeing

- the partial general approaches reached by Council  
**11 December 2012 on the specific programme (1)**

### **1.1 Understanding health, wellbeing and disease**

*1.1.1. Understanding the determinants of health, improving health promotion and disease prevention*

*1.1.2. Understanding disease*

*1.1.3. Improving surveillance and preparedness*

### **1.2 Preventing disease**

*1.2.1. Developing effective prevention and screening programmes and improving assessment of disease susceptibility*

*1.2.2. Improving diagnosis and prognosis*

*1.2.3. Developing better preventive and therapeutic vaccines*



~ Budget ?

## Health, demographic change & wellbeing

- the partial general approaches reached by Council  
**11 December 2012 on the specific programme (4)**

### 1.7 Specific implementation aspects

- Knowledge and technology transfer
- Large-scale piloting and demonstration actions
- Joint programme Initiatives
- European Innovation partnership
- Public –public and public-private initiatives



# Recommendations from the independent expert group regarding future thematic priorities within Horizon 2020 (1)

## ❖ Health promotion

- Understand the barriers and facilitators to the adoption of healthy lifestyles ( individual, population) and develop innovative interventions.
- Improving mental health and wellbeing
- Understanding the conditions for success of complex population health interventions that reduce inequality



# Recommendations from the independent expert group

## Establishment of Research Networks

- **A research network**
  - consists of a variety of centres, of varying nature
  - Has capacity to contribute to excellent research
  - has **explicit responsibility to develop Europe-wide strategic research infrastructure**
  - develops a **partnership programme for less developed** institutions, centres or countries
- Proposed process: establish a **working group** to **develop** the specific **concept and feasibility** of the RNs and the evaluation criteria to guide their selection



# Recommendations from the independent expert group:

## Establishment of a board for Public Health Research

- represents all key stakeholders
- advises DG-RTD on public health research funding.

### *Role:*

- Identifies long-term public health needs, challenges, and possible solutions
- Provides oversight for the RNs
- Develops research programmes and helps implementation of the outcome of research – creating synergies and supporting knowledge translation.




European  
Commission

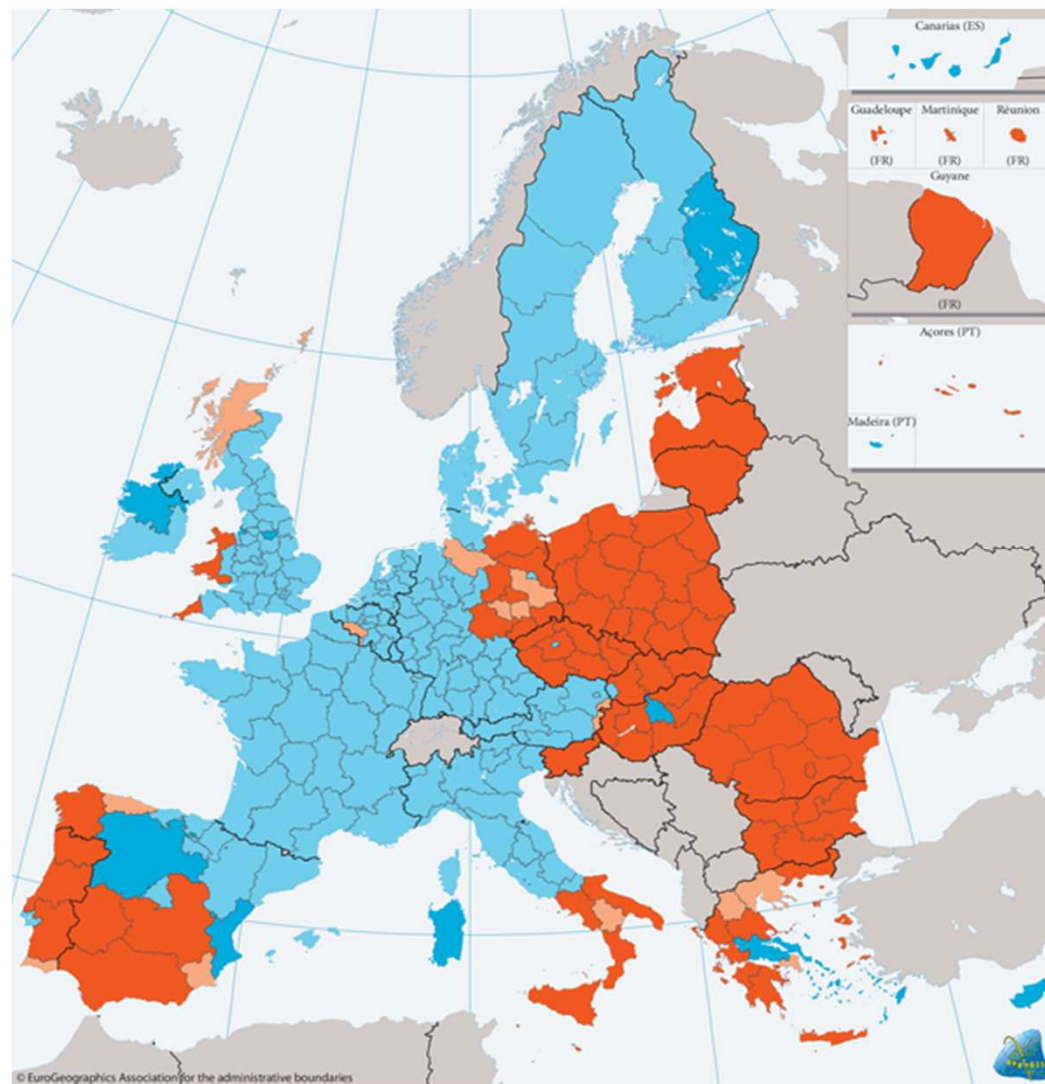
## Basics on current Cohesion Policy

**€347 billion in  
2007-13**

*Investments through  
ERDF, ESF and  
Cohesion Fund for  
benefit of European  
regions and citizens*

 Convergence objective:  
regions with GDP per  
capita under 75% of the  
EU average. 81.5% of the  
funds are spent on this  
objective.

  
 Regional competitiveness  
and employment objective.



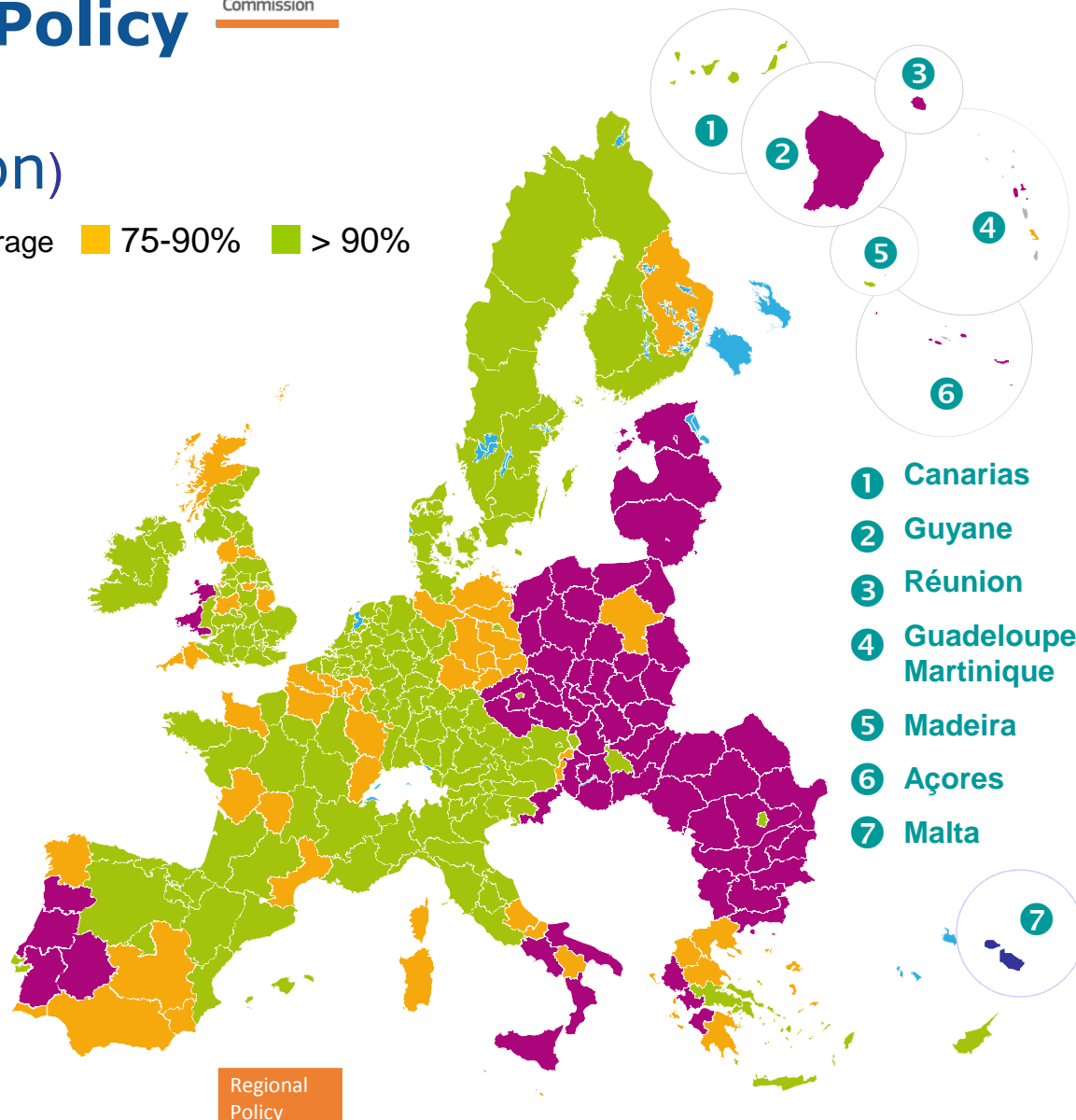
# Future Cohesion Policy for all EU regions (eligibility simulation)

**GDP/capita\*** ■ < 75% of EU average ■ 75-90% ■ > 90%

\*index EU27=100

## 3 categories of regions

- Less developed regions
- Transition regions
- More developed regions



- 1 Canarias
- 2 Guyane
- 3 Réunion
- 4 Guadeloupe/  
Martinique
- 5 Madeira
- 6 Açores
- 7 Malta





# What will ERDF finance?

- Investments in health infrastructure which contribute to national, regional and local development and reduce inequalities in terms of health status.
- Investments in e-health as part of strengthening ICT applications
- Support for research and innovation activities and enhancing competitiveness of SME's may cover health sector



# What will ERDF finance?

- Investments in health infrastructure which contribute to national, regional and local development and reduce inequalities in terms of health status.
- Investments in e-health as part of strengthening ICT applications
- Support for research and innovation activities and enhancing competitiveness of SME's may cover health sector



# Social Investment Package (20 Feb 2013)

- Social Investment for Growth and Cohesion - including implementing the ESF 2014-2020 (COMM)
- Investing in Children - Breaking the Cycle of Disadvantage (REC)
- Evidence on **Demographic and Social Trends** – Social Policies' Contribution to Inclusion, Employment and the Economy (SWD)
- Follow-up on the implementation by Member States of the 2008 European Commission Recommendation on **Active Inclusion** of People Excluded from the Labour Market (SWD)
- 3<sup>rd</sup> Biennial report on **Social Services of General Interest** (SWD)
- **Long Term Care in Ageing Societies – Challenges and Policy Options (SWD)**
- Confronting **Homelessness** in the EU (SWD)
- **Investing in Health (SWD)**
- Social Investment through the **European Social Fund** (SWD)



# Investing in sustainable health care systems

## **Cost-effective spending can bring savings and secure better health outcomes**

- Structural reforms, innovation and sound investments needed : on average, they could lead to 2 % of GDP savings by 2017 for OECD countries
- No linear relation between spending and health outcomes (high spending not always corresponding to better health)
- Examples of reforms suggested in the 2010 Commission/EPC report on health systems: reducing the unnecessary use of specialists and hospital care; improving primary healthcare services; better health promotion and disease prevention (at work, in school in health institutions and through incentives); use of less expensive equivalent (generic) drugs, etc.

## **Cost-effective technologies can bring efficiency gains**

- E.g. Health Technology Assessment for an economically informed decision



# Investing in people's health as human capital

**Health can boost economic growth by enabling people to remain active longer and in better health.**

- Poor health leads to absenteeism (3-6 % of working time) or job loss (10 % for health reasons). 23.5 % of working people have their activities restricted.
- Human and economic burdens of chronic diseases can be contained by devoting resources more directly to disease prevention and health promotion
- Only 3% of current health expenditure is dedicated to prevention

## **Health Workforce**

- Job creation potential up to 8 million by 2020 (mainly due to replacement needs).



# Investing in reducing inequalities in health

## Health outcomes vary considerably within and between Member States

- Up to 11.6 (males) and 7.9 (females) life expectancy gap between MS
- People with a lower income and lower education die younger and their health is worse (up to 10 years life expectancy difference for higher vs. basic education)
- Economic loss of between 1.5 % and 9.5 % of GDP

## Healthcare coverage can help reducing poverty and fighting social exclusion

- Universal access to healthcare services

## Health promotion and intersectoral action required – health in all policies

- addressing the social determinants of health



## Improving long-term care

- Preventive approaches including *healthy and active ageing*
- Successful rehabilitation
- Efforts to improve the capacity for *independent living*, including support for home adaptations
- Support for family members who are informal carers
- Efforts to raise *quality* in formal and informal care provision
- The use of *ICT* in drives for higher productivity



# EU Instruments and competencies

## *Platform against Poverty*

- *Annual Convention*
- *Workshop dedicated to health care (2012) with EuroHealthNet participation*

## *Social Open Method of Coordination*

- *Peer reviews*

## *Social Protection Committee*

- *Call for stronger monitoring in the area of health care; developing a model for Joint Assessment Framework in health to facilitate cross-country comparisons*





## Financial Instruments to support Social Investment Package

- *European Social Fund*
- *PROGRESS/Programme for Social Change and Innovation (PSCI)*
- *European Regional Development Fund*
- *Fund for European Aid to the Most Deprived (FEAD)*



# Implementing the Social Investment Package (1)

## *European Semester*

- **Informing the annual growth survey, national reform programmes and country-specific recommendations**

## *Social Protection Committee, the Social OMC, Peer Reviews*

- **Promoting mutual learning and sharing of best practices**
- **Monitoring the social situations through the Social Protection performance Monitor (SPPM)**

## *Platform against Poverty and Partnerships*

- **Involving stakeholders in dialogue on implementation (including through the Annual Convention)**



## Implementing the Social Investment Package (2)

*European Social Fund (ESF) and European Regional Development Fund (ERDF) in 2014-2020*

- **Implementing programmes with a social investment focus (CSRs and integrated guidance)**
- **€84 billion in ESF funding available**

*PROGRESS/Programme for Social Change and Innovation (PSCI)*

- **Financially supporting social policy innovation with the aim of scaling up successful programmes**
- **Micro-financing to provide start-ups for entrepreneurs**
- **€958 million in PSCI funding available**

*Fund for European Aid to the Most Deprived (FEAD)*

- **Helping Member States provide adequate livelihoods by addressing material deprivation**
- **€2.5 billion in FEAD funding available**

# ACTIVITIES OF EUROHEALTHNET



# EuroHealthNet

For a healthier Europe between and within countries



Over 40 participants  
across Europe



## MEMBERS

AUSTRIA	Austrian Health Promotion Foundation
BELGIUM	Flemish Institute for Health Promotion and Disease Prevention (VIgeZ) Erasmus University College
CZECH REPUBLIC	National Institute of Public Health
DENMARK	National Board of Health
ENGLAND	Department of Health Kent & Medway NHS North West Health Office
ESTONIA	National Institute for Health Development
FRANCE	National Institute for Prevention and Health Education (INPES)
FINLAND	Finnish Society for Social and Health (SOSTE) National Institute for Health and Welfare (THL)
GERMANY	Federal Centre for Health Education (BZgA)
GREECE	Institute of Preventive Medicine, Environmental & Occupational Health Prolepsis
HUNGARY	Hungarian National Institute for Health Development (OEFI)
IRELAND	Institute of Public Health
ITALY	Veneto Region
LATVIA	Centre for Disease Prevention and Control
NETHERLANDS	Netherlands Institute Public Health and the Environment (RIVM) Dutch Institute for Healthcare Improvement (CBO)
NORWAY	Norwegian Directorate of Health
POLAND	National Institute of Hygiene – Public Health Research Institute
SCOTLAND	NHS Health Scotland
SLOVENIA	National Institute of Public Health Institute of Public Health Murska Sobota
SPAIN	Universidad de La Laguna
SWEDEN	Stockholm County Council (SLL)
WALES	Public Health Wales

## COLLABORATING PARTNERS

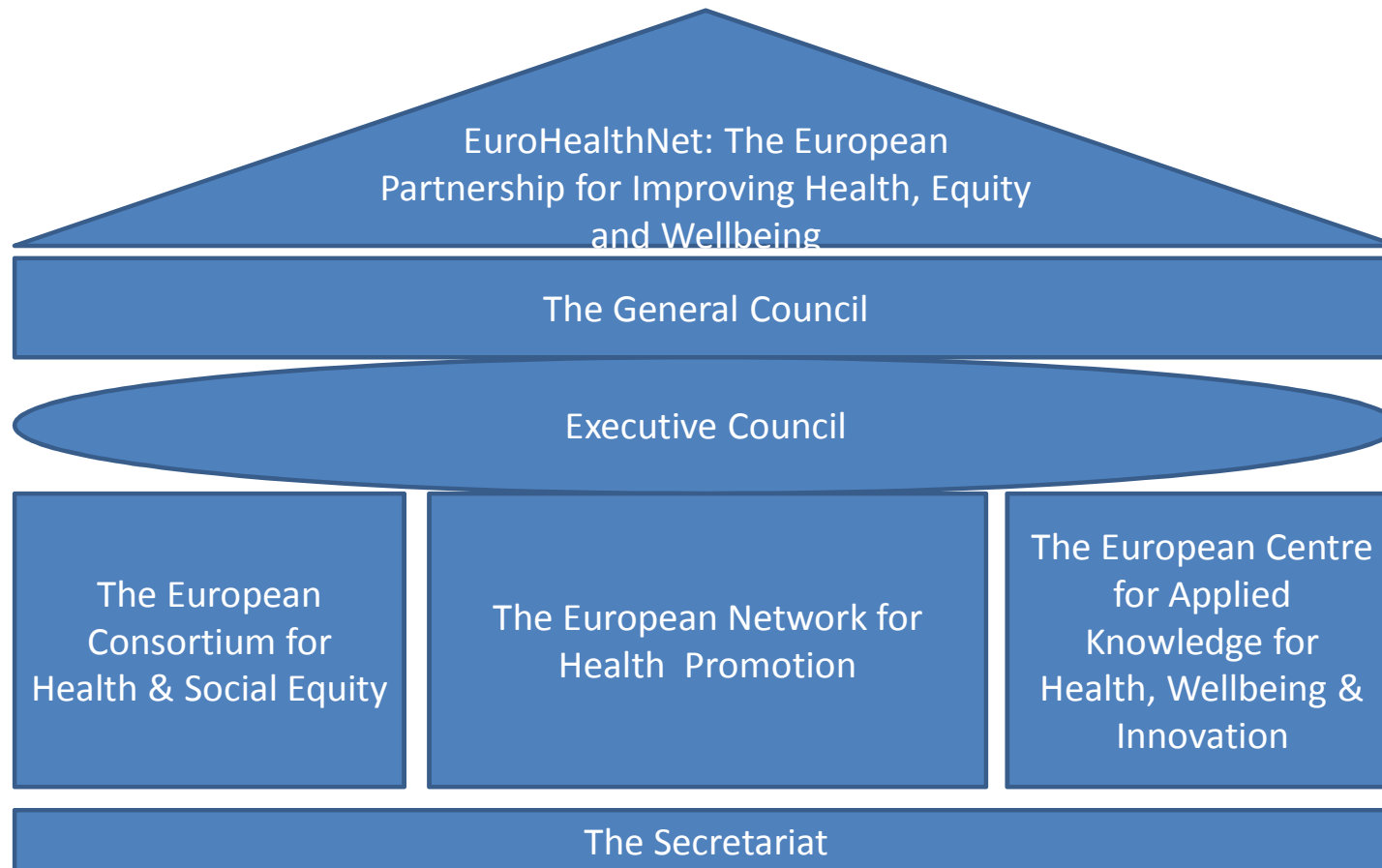
**BELGIUM** Health Promotion Research Group Ghent University, Interface Demography at the Department of Sociology Free University of Brussels **CROATIA** National Institute of Public Health **CZECH REPUBLIC** Public Health Authority of the Olomouc Region **IRELAND** Institute of Public Health **MONTENEGRO** Institute of Public Health **PORTUGAL** Research Centre on Child Studies, University of Minho **ROMANIA** National Institute of Public Health, Regional Institute of Public Health Iasi **SWEDEN** Swedish Association of Local Authorities and Regions **SWITZERLAND** Global Health Equity Foundation **UNITED KINGDOM** Health Action Partnership International (HAPI), East of England Brussels Office, Department of Mental Health Social Work and Inter-Professional Studies at Middlesex University

Tackling inequalities across policies and practices

20<sup>th</sup> May 2013

[www.eurohealthnet.eu](http://www.eurohealthnet.eu)

# EuroHealthNet 2014 - 2020



- [www.eurohealthnet.eu](http://www.eurohealthnet.eu)
- [www.health-inequalities.eu](http://www.health-inequalities.eu)
- [www.health-gradient.eu](http://www.health-gradient.eu)
- [www.equitychannel.net](http://www.equitychannel.net)
- [www.sustainable-lifestyles.eu](http://www.sustainable-lifestyles.eu)
- [www.healthyageing.eu](http://www.healthyageing.eu)

**Sources of help**  
**+ New from June 2013 see**  
**[www.healthpromotion.eu](http://www.healthpromotion.eu)**