

Financed by



Schweizerische Eidgenossenschaft
Confédération suisse
Confederazione Svizzera
Confederaziun svizra

Swiss Agency for Development
and Cooperation SDC

MIGRATION
FOR DEVELOPMENT



JOINT MIGRATION AND DEVELOPMENT INITIATIVE

*Strengthening the contribution of migration to development
by reinforcing its local dimension: news perspectives and
opportunities of building partnerships*

*Workshop on International Funding and Partnership
Florence, 28th September, 2015*

Implemented by





1. The JMDI Programme

PHASE 1

Objective: “To support civil society organisations and local authorities seeking to contribute to linking migration and development”.

Duration: 2008 – 2012

Countries: 16

Projects: 51

Partners: IOM, UNFPA, ILO, UNHCR, + UN Women

LESSONS LEARNT

Effectiveness = establishment of strategic partnerships between CSO and governments at decentralized levels.

Most successful = strong anchorage with the local governments in countries of origin and destination

Sustainability = shared common vision among actors leads to ownership & the commitment of time, energy and resources.

MAPPING OF LOCALLY LED M&D INITIATIVES

PHASE 2

Objective: “To maximize the development potential of migration for local development through the delivery of targeted support to local authorities and non-state actors”.

Duration: 2012-2016

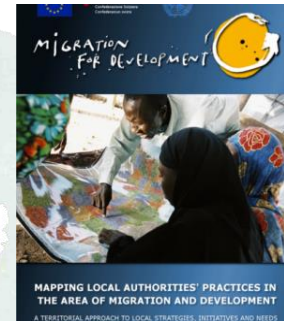
Countries: 8

Projects: 16

Partners: IOM, UNFPA, ITC-ILO, UNHCR, UN Women, + UNITAR

WHY FOCUS ON THE LOCAL LEVEL?

- **Migration is frequently a local-to-local process**
- **Local Authorities are closer to the ground** and are able to better comprehend and address the real situation of migrants
- **Local Authorities have** de jure or de facto **important competencies** in the field of migration policies
- Yet, local governments have **not received the same level of attention** as other stakeholders
- JMDI Mapping Report of local authorities' practices in the field of M&D has identified many promising initiatives but has shown that these often remain **isolated experiences**





OUTPUT 1: DEVELOPMENT IMPACT OF INITIATIVES OF LOCAL AUTHORITIES MAXIMISED THROUGH UP-SCALING AND CAPACITY BUILDING

To move beyond isolated experiences to more systematic local development strategies

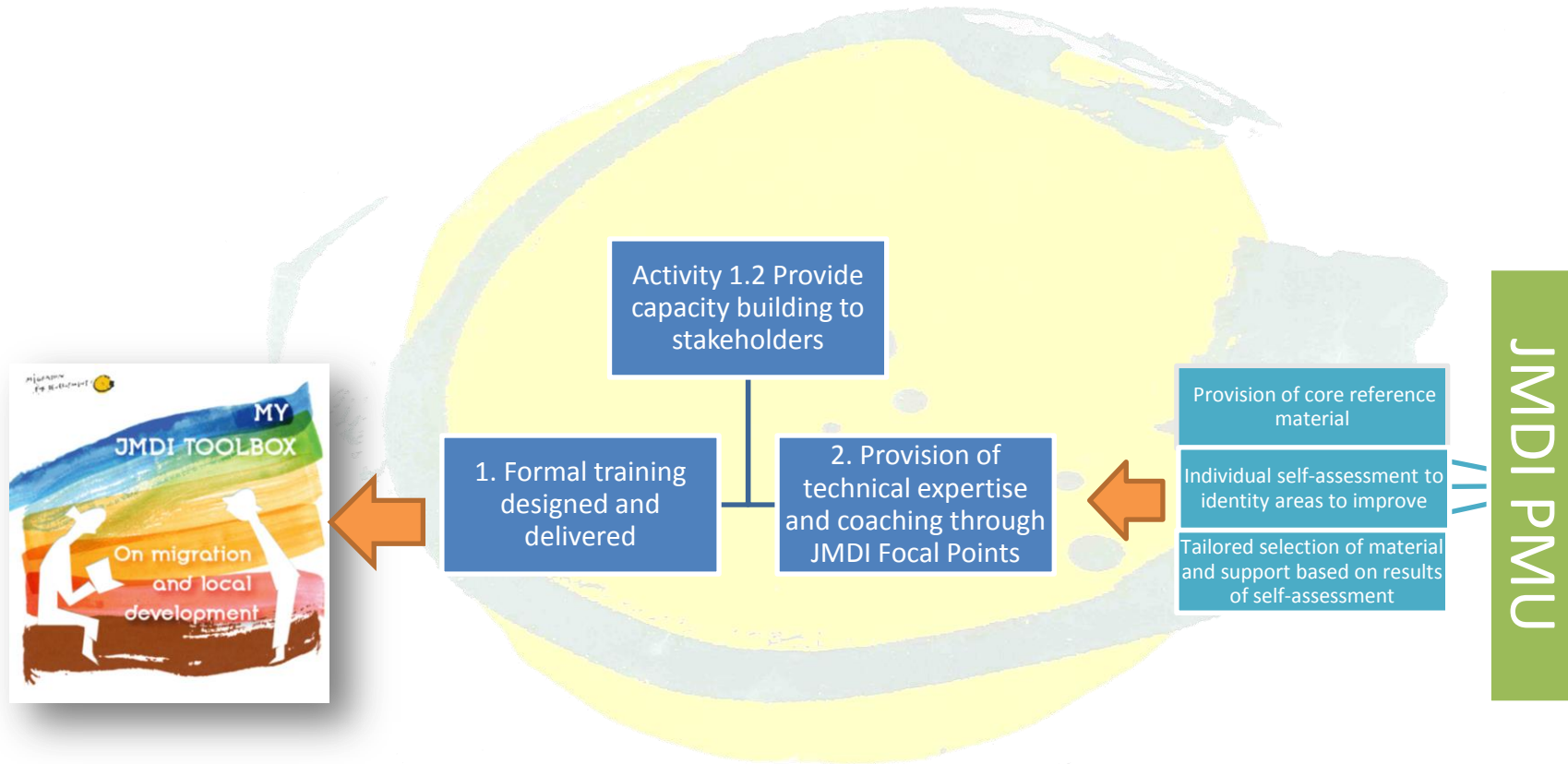
JMDI Target Countries

- Reinforcing selected initiatives, to make them more far-reaching in terms of impact, population outreach and sustainability;
- Approach to scaling-up will concentrate on local and national realities and opportunities and will therefore take different forms from one supported initiative to another;
- The intention is to reach a 'tipping point' when the results are owned by the stakeholders and innovation becomes institutionalized.

**Costa Rica
Ecuador
El Salvador
Morocco
Nepal
Philippines
Senegal
Tunisia**



OUTPUT 1: DEVELOPMENT IMPACT OF INITIATIVES OF LOCAL AUTHORITIES MAXIMISED THROUGH UP-SCALING AND CAPACITY BUILDING





OUTPUT 2: CONSTITUENCIES OF LOCAL ACTORS IN THE REGIONS OF INTERVENTION EQUIPPED TO ENGAGE ON AND PROMOTE THE LINKS BETWEEN MIGRATION AND DEVELOPMENT

To share good practices and lessons learnt at local, regional and national level for policy change.

- Set up networks of interested local authorities and non-state actors beyond those involved in the JMDI projects to share lessons learnt and promote and support the emergence of other locally-led migration & development initiatives;
- To promote the role of local authorities and other local actors in managing migration for development among national actors;
- To influence local, regional and national policy making for the inclusion of migration into local development planning.



JMDI POLICY WORK PLANS AT COUNTRY LEVEL



OUTPUT 2: CONSTITUENCIES OF LOCAL ACTORS IN THE REGIONS OF INTERVENTION EQUIPPED TO ENGAGE ON AND PROMOTE THE LINKS BETWEEN MIGRATION AND DEVELOPMENT

Example of Policy Work Plan Mapping

WORKPLAN CAPTURING JMDI OUTREACH STRATEGY IN REGIONS OF INTERVENTIONS (implementation of output 2)

Title of JMDI funded project:

JMDI Bicol and SUMMID Calabarzon

Country and territory of intervention (based on the location of the project):

Philippines, Regions I, IV-A, V, VI and XI, National Capital Region

Author of the document:

Golda Myra Roma

Table 1: At the local level



Action/space	Objective	Target audience	Type of activity and precise location	Timeline/duration	Financial resources
1. Presentation of JMDI Bicol and SUMMID Calabarzon best practices to Regions III (Central Luzon), VII (Central Visayas) and XI (Davao)	<ul style="list-style-type: none"> -Advocate to the Regional Development Councils of Regions III, VII and XI the replication of some of the best practices from JMDI projects within their respective territories. The three regions are also major source areas of OFs, major beneficiaries of migrant support, and have potential to mainstream M&D in their local planning and programming. -Network with other CSOs and migrant groups within the regions who could assist the RDCs in replicating JMDI -Platform to test the tools developed by the GRDR -Promote and institutionalize the use of My JMDI Toolbox and M4D platform 	-40 local stakeholders per region: RDC members, LGUs, regional government agencies, CSOs, academe, migrant groups, faith-based organizations	<ul style="list-style-type: none"> Half-day policy forum/knowledge fair in each of the region *RDC officers from Regions IV-A and V to also present 	<ul style="list-style-type: none"> Region III: October 19, 2015 Region VII: October 21, 2015 Region XI: October 22, 2015 	USD 1,500 (meals for participants)
2. Private sector in Bicol and Calabarzon	<ul style="list-style-type: none"> -Encourage the stronger participation of private sector on M&D such as expediting business processes, IT-based business transactions for OFs, additional tax incentives, offering of comprehensive menu of options and business counseling, among others -Forge partnerships with business counterparts in host countries for more options for OFs while in host countries, as well as in inclusive finance and financial literacy initiatives -Sharing of best practices developed in other areas such as the Sorosoro Ibaba Credit Cooperative in Calabarzon -Build a network of M&D advocates among the private sector at the local level 	<ul style="list-style-type: none"> -Social service agencies such as Pag-IBIG, Social Security System and PhilHealth -Local or region-based cooperatives, micro-finance, chamber of commerce -Banking and financial institutions including money-transfer agencies 	Policy advocacy as part of the MOF celebration	November and December 2015 (specific dates to be determined)	**Costs will be embedded in the MOF budget for the projects



OUTPUT 3: LOCAL AUTHORITIES AND CIVIL SOCIETY ORGANISATIONS CONNECTED INTERNATIONALLY TO FACILITATE PARTNERSHIPS AND KNOWLEDGE SHARING

Knowledge management for mutual support and promoting the key role of local actors in the international migration & development agenda

- Using the M4D Net online platform to connect M&D practitioners worldwide
WWW.MIGRATION4DEVELOPMENT.ORG
- Developing specific knowledge products addressing needs and challenges of local authorities
- Leveraging on dedicated meetings for local authorities to facilitate partnership building



JMDI KNOWLEDGE MANAGEMENT STRATEGY



OUTPUT 3: LOCAL AUTHORITIES AND CIVIL SOCIETY ORGANISATIONS CONNECTED INTERNATIONALLY TO FACILITATE PARTNERSHIPS AND KNOWLEDGE SHARING

The structure of the JMDI Knowledge Management strategy

One overarching pillar and four supporting pillars:

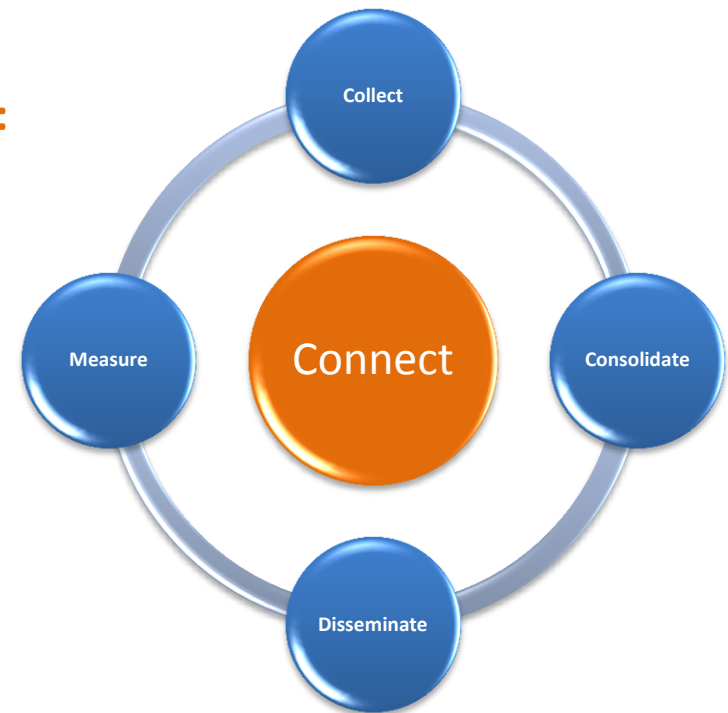
Pillar 1: Connecting local M&D actors and enhancing networks

Pillar 2: Collecting information

Pillar 3: Consolidate information into Knowledge Products

Pillar 4: Disseminating knowledge

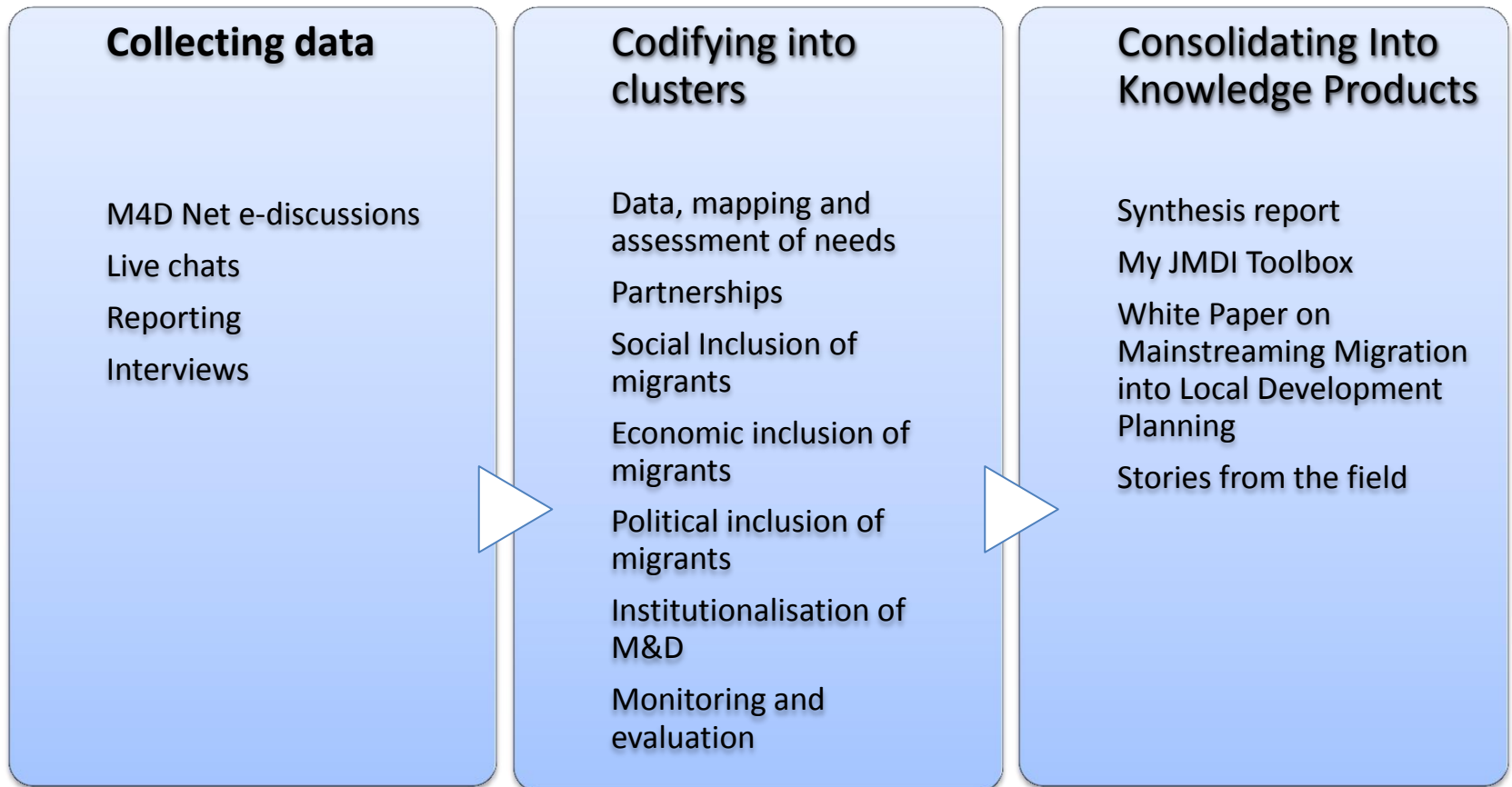
Pillar 5: Measuring our success





Pillar 3: Consolidate information into Knowledge Products

Codification system for collection of good practices and lessons learned

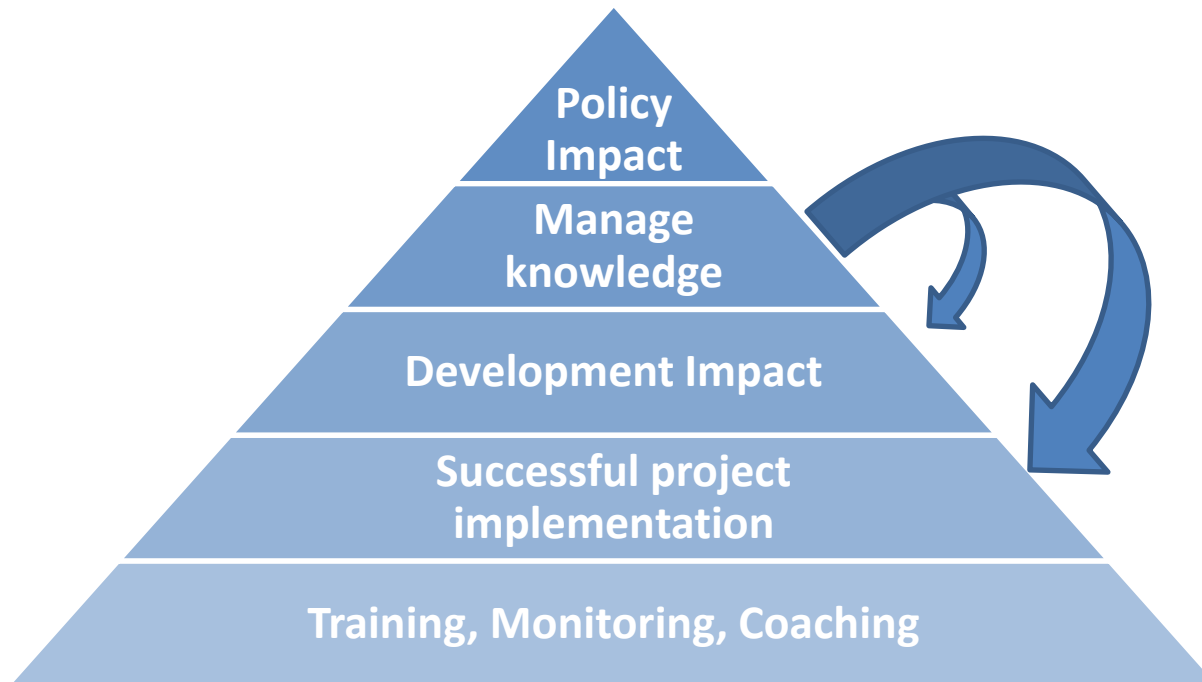


[Example codification project Philippines](#) [Example policy plan codification Philippines](#)



OUTPUT 3: LOCAL AUTHORITIES AND CIVIL SOCIETY ORGANISATIONS CONNECTED INTERNATIONALLY TO FACILITATE PARTNERSHIPS AND KNOWLEDGE SHARING

The Knowledge Management Pyramid



Connect with us:

migration4development.org



Migration 4 Development



@JMDI_M4D