



## CONFERENZA

### *“Artificial Intelligence and Chronic disease management”*

**Mobilizing healthcare for you  
with big data**

**18 – 19 Giugno 2018  
Palazzo della Provincia Autonoma di Trento  
P.zza Dante 15  
TRENTO**

*Giulia Pellizzon  
Arsenà.IT - Regione Veneto*



# Who is Arsenà.IT?



Arsenà.IT is a voluntary consortium of 9 LHAs, 2 HTs and one oncology research center



It was established 12 years ago to align and make interoperable the systems of Local Health Authorities and Hospital Trusts and create an integrated network of digital health services to enhance the excellences of regional context.



# What is HIE?



“l'insieme dei **dati** e documenti digitali di tipo sanitario e socio-sanitario generati da eventi clinici presenti e trascorsi, riguardanti l'**assistito**”

“the **dataset** and digital documents from health and social-health area, generated by clinical events now or in the past, concerning the **patient**”

**art. 12 law 179/2012, converted with law 221/2012**



# What is HIE?



“The concept and use of the HIE system are intended to be extended to the various areas: Hospital, Territorial, Social, Prevention and promotion of health. The tool must be unique, at the regional level regardless of the area from which information comes”

**PSSR 2014-2017**



# HIE purposes



## HEALTHCARE

prevention,  
diagnosis,  
treatment and  
rehabilitation



## RESEARCH

study and scientific  
research in clinical,  
biomedical and  
epidemiological  
area



## GOVERNANCE

healthcare planning,  
quality check and  
evaluation



# HIE: first purpose



## HEALTHCARE

prevention,  
diagnosis, treatment  
and rehabilitation



# IHE system infrastructure



Clinical Pathways

**workflow**

XDW, PCC WD profiles

Clinical Data Sharing

**semantic**

XDS-lab, PCC profiles

Data Sharing

**infrastructure**

XDS, XUA, BPPC



# HIE system: an integrated cloud of data



**ePrescriptions**  
40M/year  
**eReferrals**  
20M/year



**4000 GPs**

**1330  
pharmac  
y**



**ePrescriptions**  
and "Sanità KM  
Zero" app for  
citizens



From 01.01.2017:  
discharge letters,  
Emergency Reports,  
RX Reports, Lab  
Reports, ePrescriptions,  
eReferrals

**70000 health workers  
(8000 professionals)**



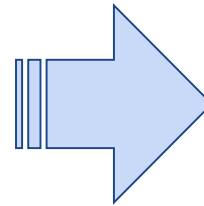


# HIE documents at today



## Dettaglio documenti disponibili nel Fascicolo

Tipologia di documento	Numero di documenti disponibili
Ricette Farmaceutiche	121.586.123
Ricette Specialistiche	64.091.607
Referto di laboratorio	6.507.119
Referto di radiologia	2.417.812
Verbale di Pronto Soccorso	1.720.404
Lettera di dimissione ospedaliera	559.084
Referto di visita specialistica	493.224
Referto di anatomia patologica	363.247
Verbale operatorio	276.167
Referto di cardiologia	35.136
Referto di gastroenterologia	21.866
Referto di diabetologia	15.485
Referto di oncologia	13.103



**BUT it is not only a documents storage....**

# HIE system in Veneto Region



The HIE in Veneto Region is a driving force to the concept of Sanità KM Zero. This is expressed a double purpose:

- **Services** → facilitate access to services by exploiting the potential of digital world
- **Needs** → bringing the health system closer to the real needs of citizens and professionals, involving them in the process of redefining services



**New paths and new tools for access to health  
for citizens and operators everywhere and at any time**



# Sanità km Zero



A new way of thinking:

- Reduced distances in access to services
- Increased opportunities for citizens and health professionals
- Simple, close and immediate health

All patient data available in the FSEr:

- Booking online
- Online download
- Online payments
  - Telemedicine
  - Co-creation

And not only.....



# Sanità km Zero

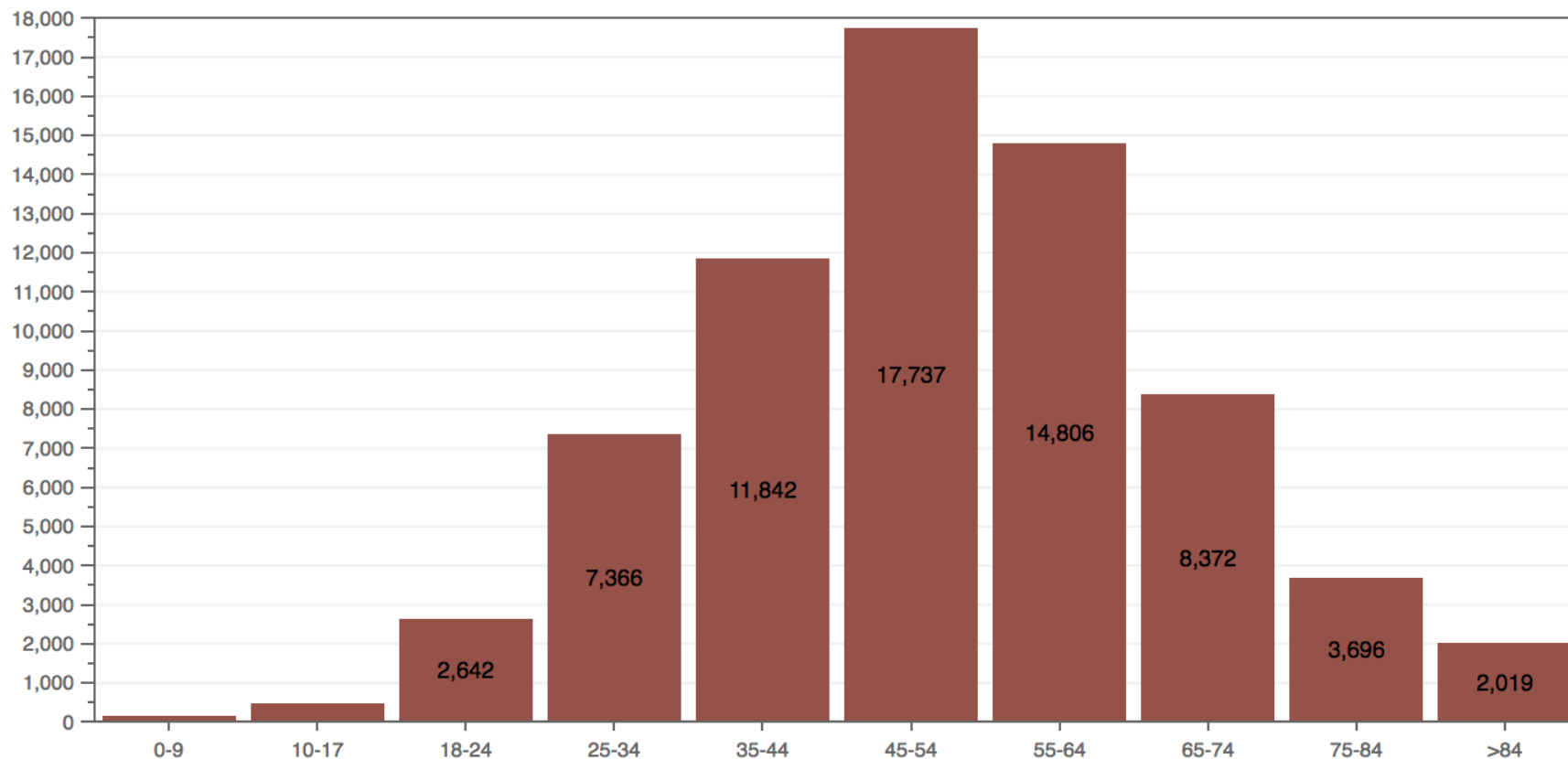


Through this app, users could:

- Ask the GP for a **prescription renewal** (via e-mail, SMS, WhatsApp...)
- Receive a **notification** whenever a new ePrescription is available
- See the list of **all prescribed drugs**
- Get the prescribed drug(s) at the pharmacy without any further written authorization by their GP



## AGE ANALYSIS OF APP USE



■ number of citizen with at least one access to the app

# HIE first generation



**Fascicolo Sanitario elettronico**

SERVIZIO SANITARIO REGIONALE EMILIA-ROMAGNA

**Area Servizi**

- Servizi FSE
- Cerca Documenti
- Carica Documenti
- Elimina Documenti
- Modifica i miei Profili
- Controlla gli Accessi
- Disattiva Fee
- Informatico e Privacy
- Info Generali
- Privacy
- Consenso
- Servizi Online**
- Cup Web
- Pagamenti online
- Cerca Medico
- Cerca Struttura Sanitaria
- Richiedi Cartella Ricovero
- Comunicazione
- News/Eventi/Occorri di Not

**Carica Documenti**

Riepilogo parametri inseriti  
Documento: referto\_radiologia.pdf  
Descrizione: Referto tacca gonio sinistri  
Codice: 248967238947289  
Azienda Emittente: Azienda Ospedaliera S. Orsola-Malpighi  
Stato: non assicurata  
Tipo: Referto di Radiologia  
Data: dal 15/03/2009

Documento Caricato Correttamente

Codice	Descrizione	Data
248967238947289	Referto raggi torace	10/02/2009

Tipi

Tipi	Struttura Emittente	Stato
Referto di Laboratorio	Azienda Ospedaliera S. Orsola-Malpighi	Non assicurata

Note

Referto per visita lavoro

Carica un Altro Documento

Documenti Già Caricati

**Area Personale**

**La Mia Notifica**

NUOVO Referto di Laboratorio  
10/06/2009 - AUSL Bologna

NUOVO Referto di Laboratorio  
12/07/2009 - AUSL Bologna

**I Miei Medici**

Medico di Famiglia  
Pediatria  
Dermatologia  
Cardiologia

**I Miei Link**

Salute  
Pubblica Salute Bologna  
Progetto SSN

**La Mia Agenda**

marzo - 2009

0	1	2	3	4	5	6	7
8	9	10	11	12	13	14	15
16	17	18	19	20	21	22	23
24	25	26	27	28	29	30	31

per assistenza via mail [assistenza@fascicolo-sanitario.it](mailto:assistenza@fascicolo-sanitario.it) - per assistenza telefonica chiama il numero 800 179 944 (dal ven 9-16)

The first generation of HIE systems are oriented to implement the so-called MyPage of the citizen with a consultation purpose. In many cases, citizens can give access to health professionals to view their previous clinical data.

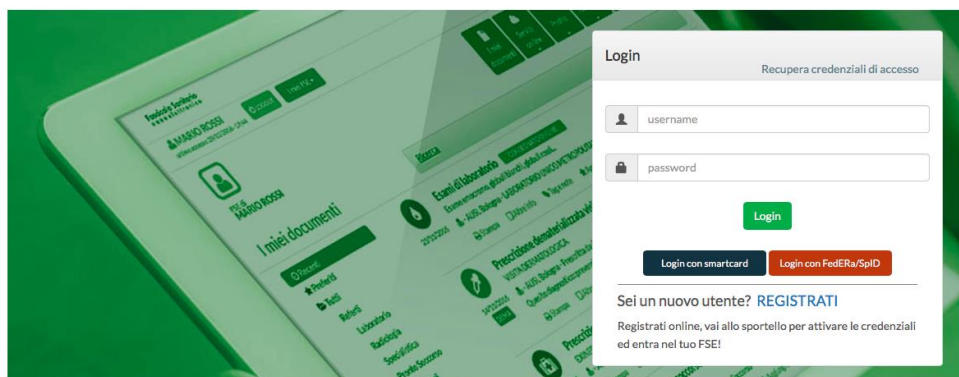


# HIE second generation



Fascicolo Sanitario  
elettronico

SERVIZIO SANITARIO REGIONALE  
EMILIA-ROMAGNA



Ritira i referti on line  
senza andare allo sportello



Hai la tua storia clinica  
sempre disponibile, anche in mobilità



Usa le deleghe  
per gestire i fascicoli di tutta la famiglia

The second generation of HIE systems are oriented towards the implementation of health services for citizens and professionals. Its are strongly based on the concept of care path and allow interactivity between citizen and operators, and between the operators themselves.





# HIE third generation



Third generation of HIE system allow to share not only clinical data, but also **processes** in order to manage **continuity of care**. This architecture makes it possible to exploit the opportunities offered by third generation systems, for example **mobile applications**, social media, cloud and big data. To do this, it is necessary to "extract from traditional information systems" not only the characteristic datasets of interoperability, but also all the information and the statuses of the single activities (tasks) of clinical processes.





# HIE system: other purposes



## RESEARCH

study and scientific  
research in clinical,  
biomedical and  
epidemiological  
area



## GOVERNANCE

healthcare planning,  
quality check and  
evaluation





**Quality,  
Public Health  
& Research**

QRPH profiles

**workflow**

XDW, PCC WD profiles

**semantic**

XDS-lab, PCC profiles

**infrastructure**

XDS, XUA, BPPC



# How to use IHE system as QRPH source



Integrating the Healthcare Enterprise

# IHE

5 **IHE Quality, Research and Public Health  
(QRPH)  
White Paper**

10 **Using IHE profiles for Healthcare - Secondary  
Data Access**

15 **Published**  
Revision 1.1

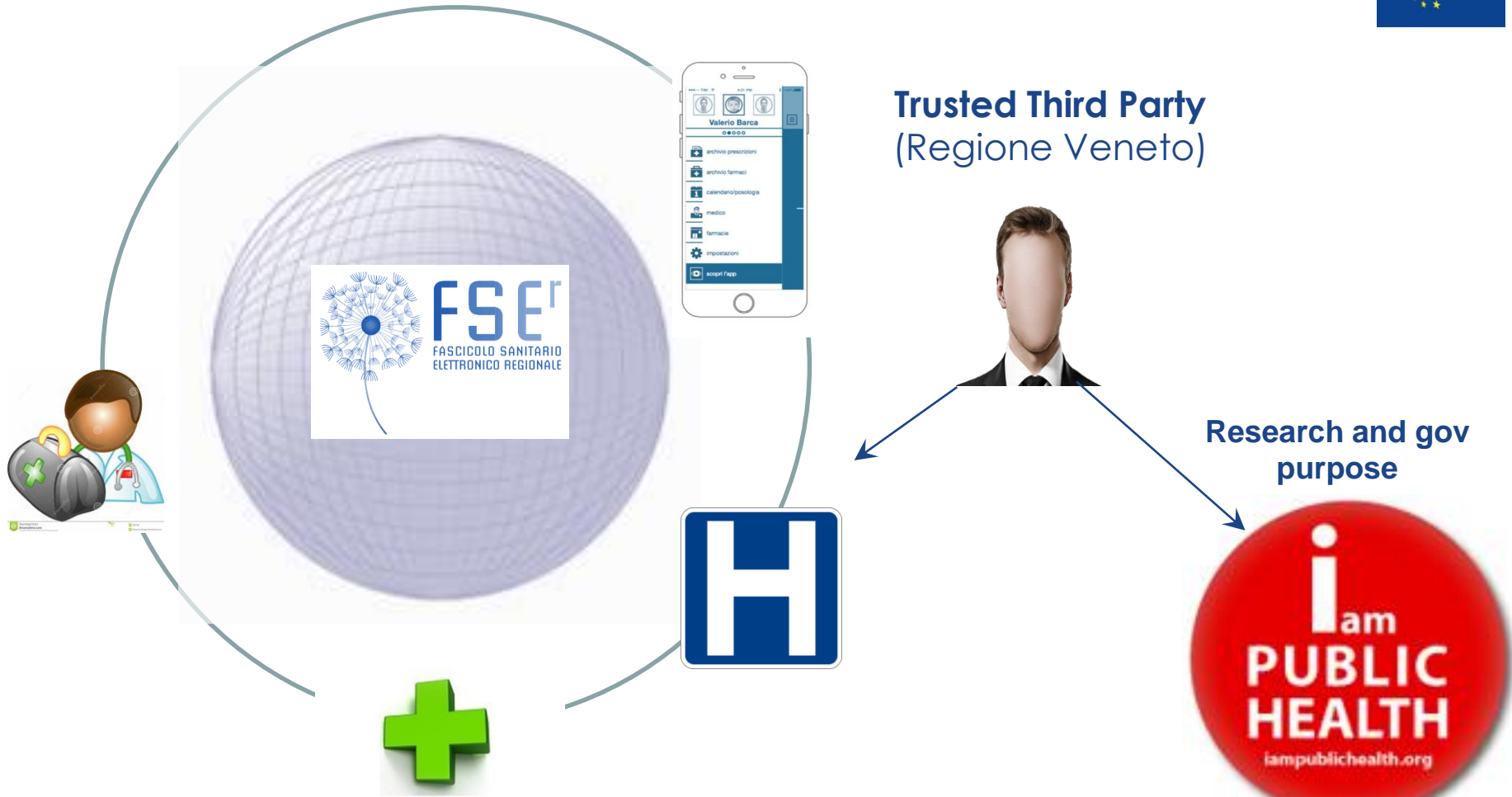
20 Date: November 9, 2016  
Author: QRPH Technical Committee  
Email: [qrph@ihe.net](mailto:qrph@ihe.net)

25 **Please verify you have the most recent version of this document. See [here](#) for Published versions and [here](#) for Public Comment versions.**

Copyright © 2016 IHE International, Inc.



# HIE system: not only healthcare...



# Some example of big data in Arsenà.IT



# Big Data purposes in Arsenà.IT



- ✓ Project management/monitoring (e.g. for Arsenà.IT to monitor the development of the project and for our LHA partners to see if they reach the annual technical objectives)
- ✓ Health services management (e.g. for LHA manager people to provide availability of specialist visits/exams according to real requests)
- ✓ Quality purposes (e.g. to monitor if GPs are prescribing according to guidelines or Regional/National regulations)
- ✓ Public health surveillance, disease control (e.g. chronic diseases related to environment data)
- ✓ Research
- ✓ Predictive and personalized medicine & Advanced Support Systems

## Features:

- ✓ Real-time data collection
- ✓ Completeness and precision of information
- ✓ Different levels of granularity (Regional/LHA/doctor/patient data)
- ✓ Possibility to manage access to dashboards according to user's role and identity



# Purpose 1: Project management (I)



## Fascicolo Sanitario Elettronico regionale

Documenti disponibili nel Fascicolo



198.100.377

Cittadini che hanno attivato il Fascicolo



476.661

Cittadini che utilizzano l'app Sanità km zero



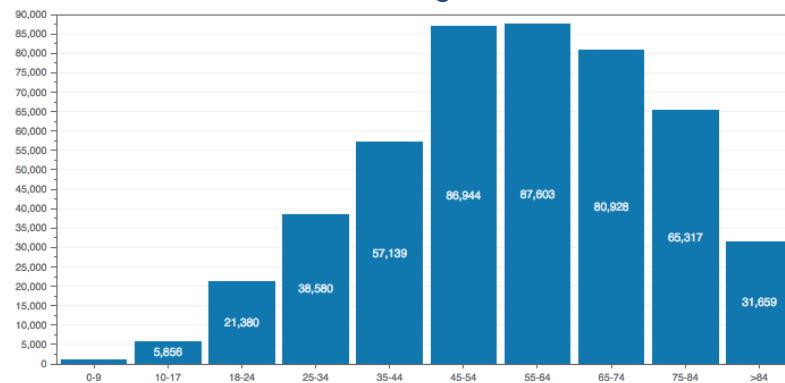
67.397

MMG attivati alla raccolta del consenso

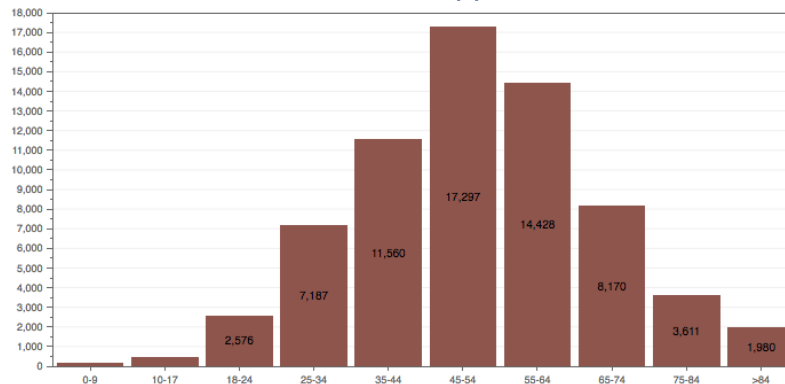


20.68 %

### Patients with signed consent



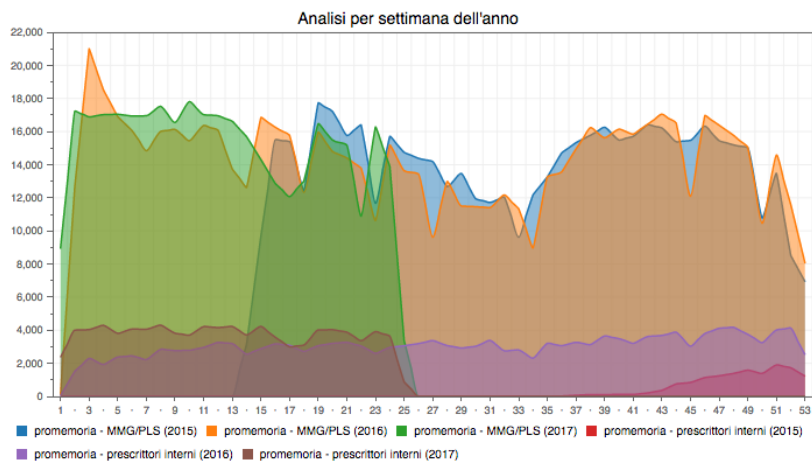
### Patients with app access



# Purpose 1: Project management (II)



## Ricette specialistiche prescritte dall'Azienda

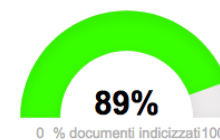


## Indicatore F2.1: Referti di Chimica Clinica e Referti di Microbiologia

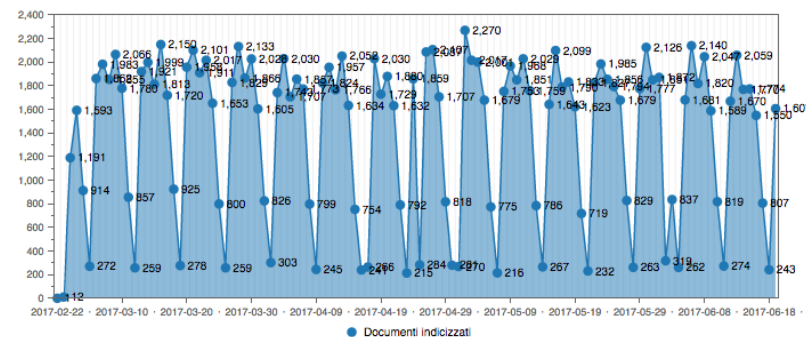
Valore dell'indicatore stimato sugli ultimi 7 giorni

Stima doc. indicizzati (numeratore)	Doc. firmati (denominatore)	Stima indicatore (%)
39240	44125	88.93

Valore indicatore



## Andamento temporale per data di creazione (numeratore)





# Purpose 2: Governance (I)

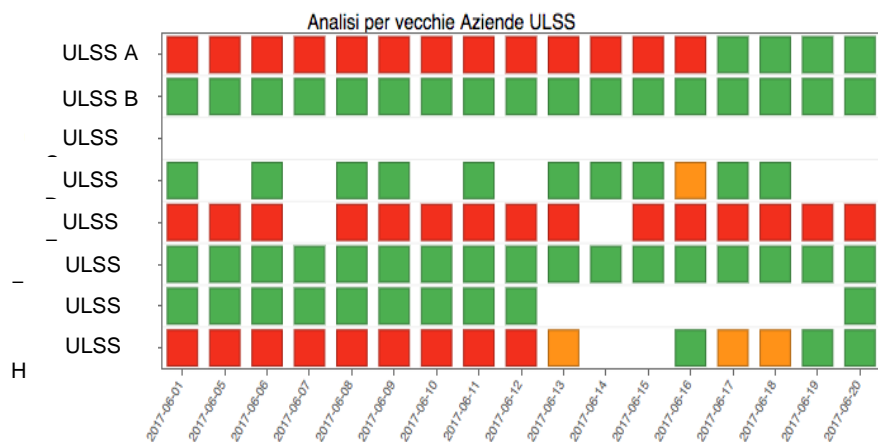
## Waiting lists monitoring



Prestazione Priorità

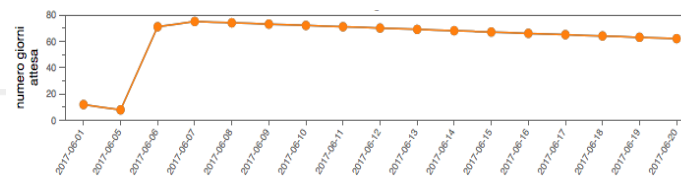
PRIMA VISITA OCULISTICA B

### Valutazione della disponibilità di offerta della Azienda per la prestazione e priorità selezionate

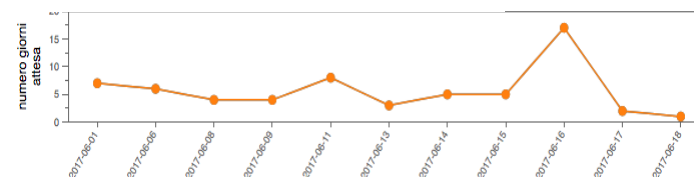


- : almeno una disponibilità per la prestazione e la priorità selezionate
- : disponibilità fuori soglia per la prestazione e la priorità selezionate
- : nessuna disponibilità per la prestazione e la priorità selezionate
- : disservizio lato CUP (nessuna risposta)

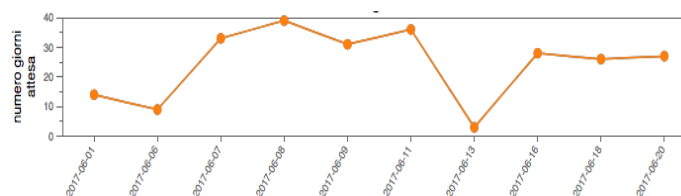
Urgente (soglia 1gg): media 61,76



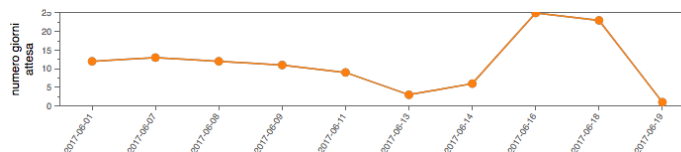
Breve (soglia 10gg): media 5,64



Differita (soglia 30gg): media 24,6



Programmata (soglia 180gg): media 11,5



# Purpose 2: Governance (II)

## Drug expenditure monitoring

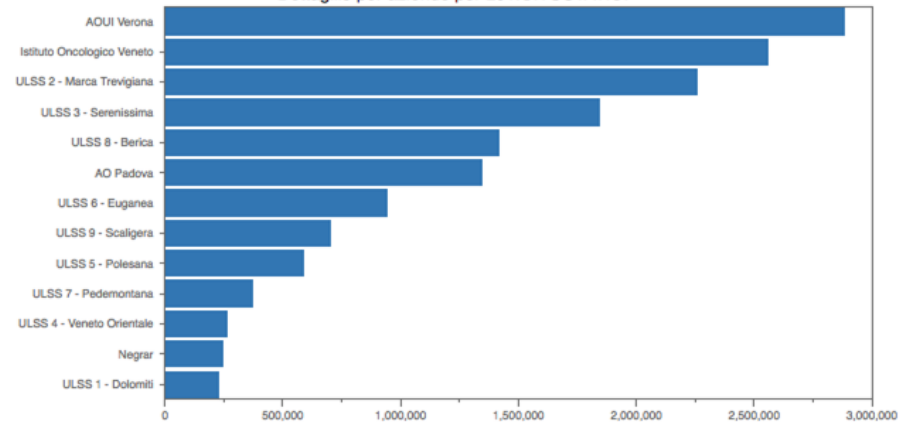


Spesa per ATC di II e V livello



Cliccare sullo specifico ATC della torta per aggiornare il grafico sottostante

Dettaglio per aziende per L01.CITOSTATICI



Esporta la tabella 8 del report

Esporta la tabella 9 del report

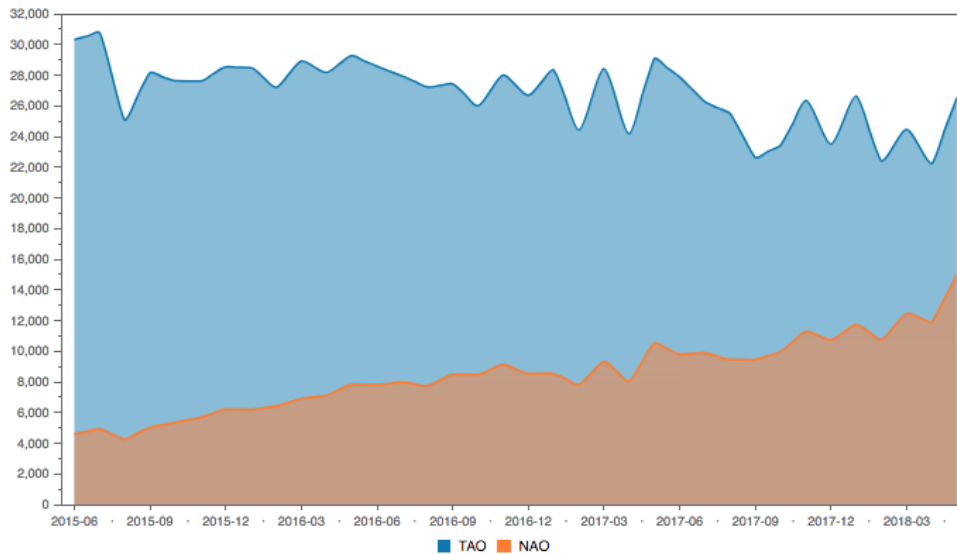
Esporta la tabella 10 del report

# Purpose 3: Public Health (I)

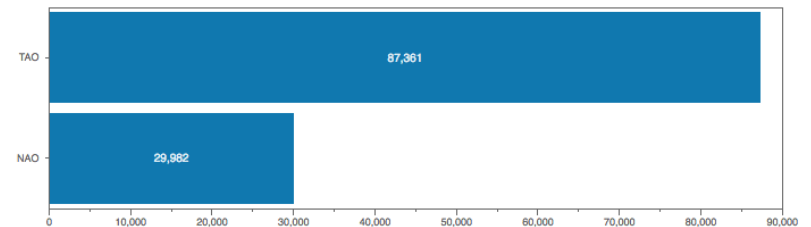


## AVK – NOAC impact monitoring of the introduction of new drugs

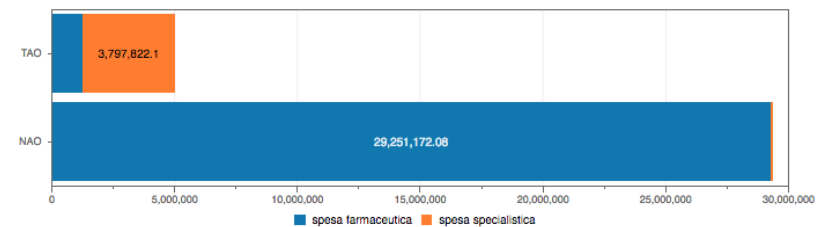
From June 2015 at today  
Number of patient with AVK/NOAC treatment



Numero pazienti a cui sono stati prescritti anticoagulanti orali nell'ultimo anno



Spesa totale a carico di SSN per anticoagulanti orali nell'ultimo anno



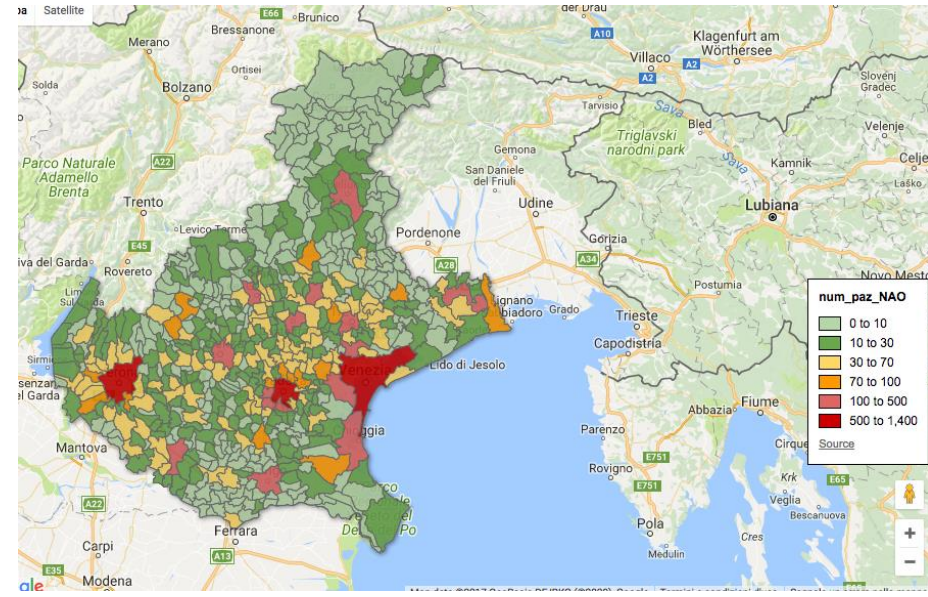
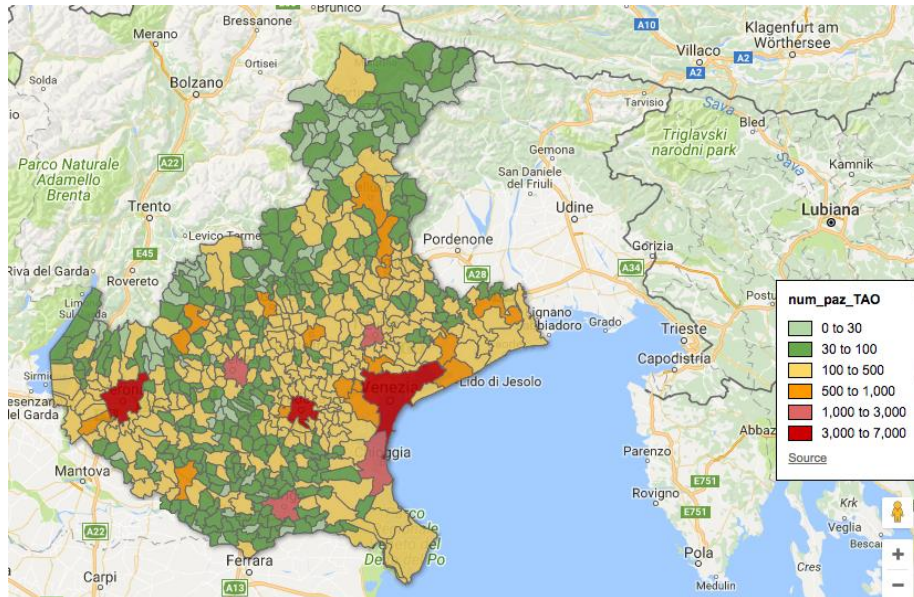
# Purpose 3: Public Health (II)



Number of patient

AVK

NOAC





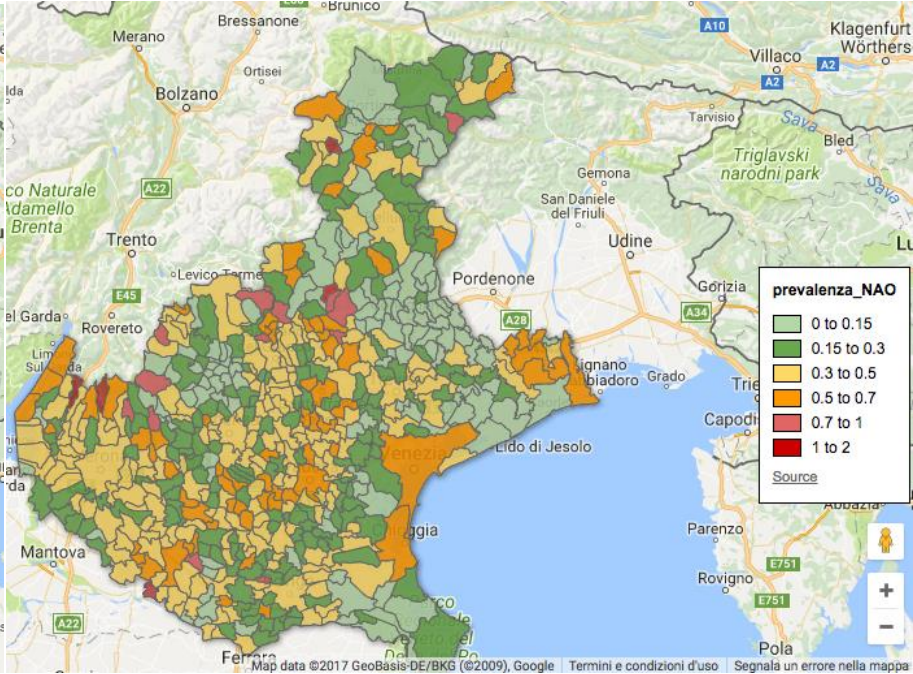
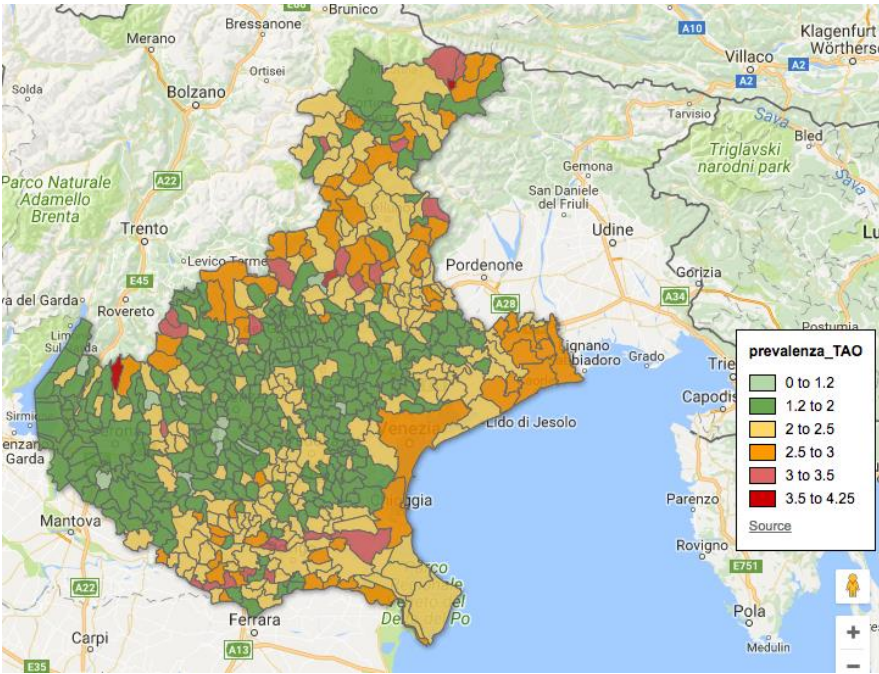
# Purpose 3: Public Health (III)



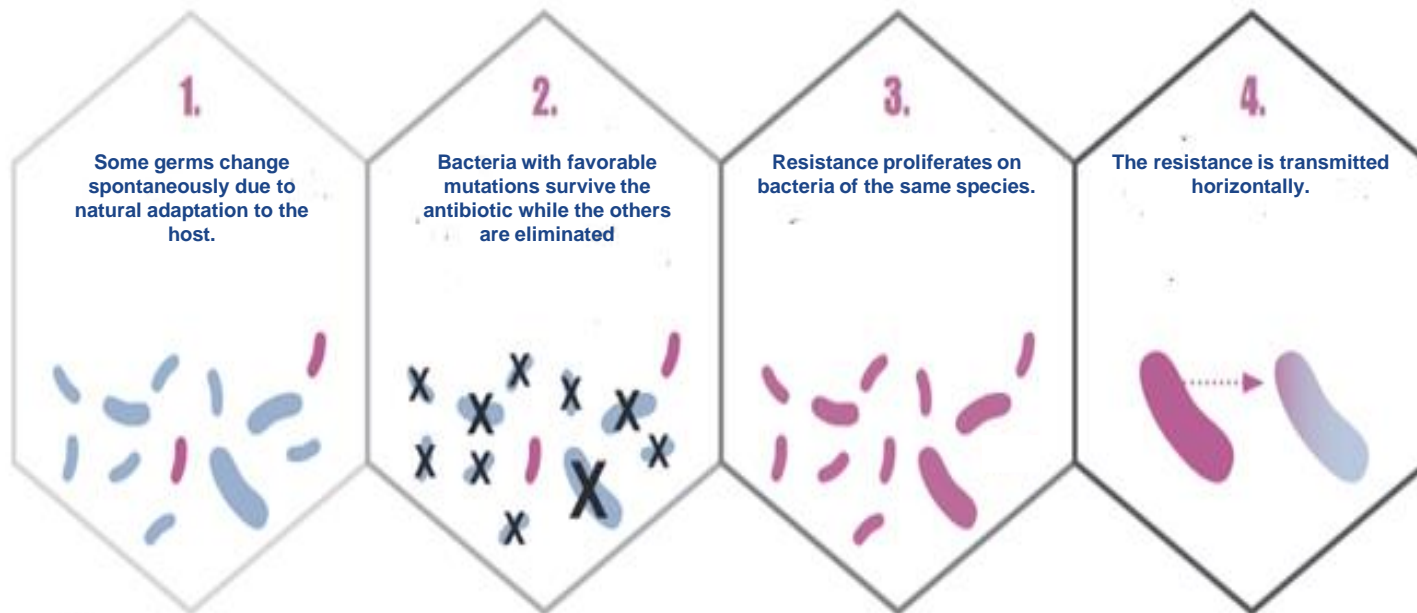
## Patient prevalence

AVK

NOAC



# Purpose 4: biosurveillance (I)



## The general framework:

- The spread of increasingly resistant bacterial strains
- The ineffectiveness of antibiotics
- The absence of new generation antibiotics



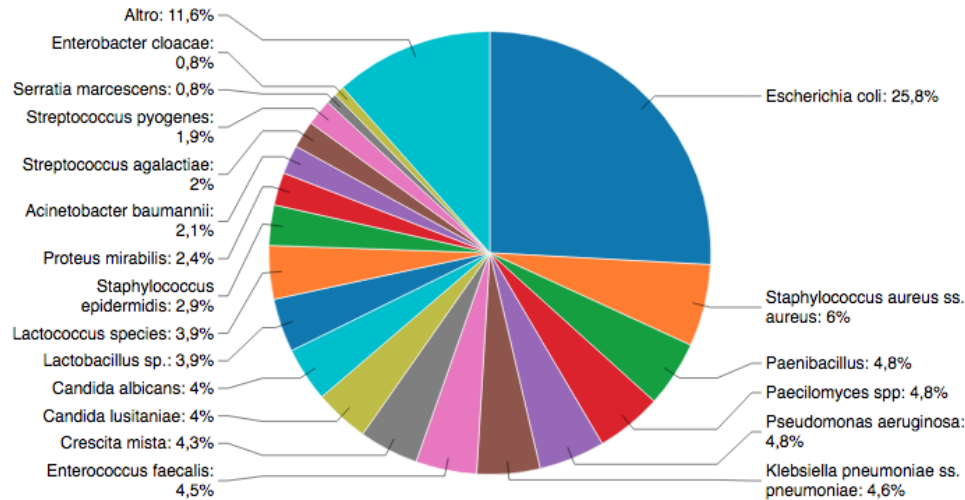
- Difficulty in care
- 50,000 deaths each year in Europe and the USA
- Need for a regional and national monitoring plan of bacterial resistance
- Need for real-time monitoring of infections
- Focus on risk environments: hospitals and nursing homes, incentives for screening
- Prescribing appropriateness
- Patient compliance

# Purpose 4: biosurveillance (II)

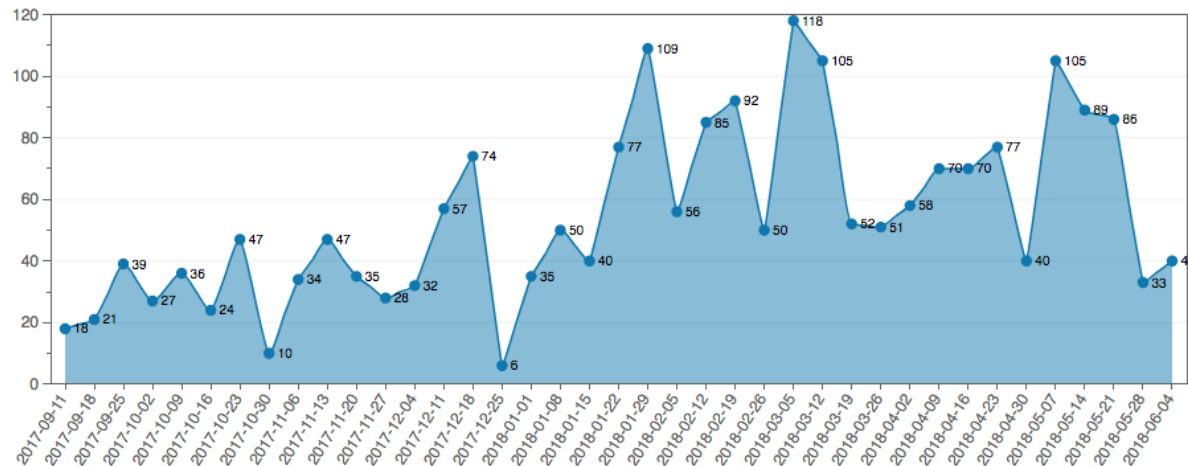


September 2017 - LHA example (Lab reports from EHR)

Distribuzione percentuale delle colture positive per tipologia di germi



Numero di colture positive per Escherichia Coli: andamento settimanale



# Why ML and AI in Healthcare?

1. To test the application of **ML and AI** to the enormous amounts of data made available by the HIE system and by the new digitization processes
2. Develop **ML models** with the possibility to link them to the HIE system as support services to the clinical world
3. Enable, through the application of **ML and AI**, the transformation from an initiative medicine to a predictive medicine



## HAPT2D

High Accuracy of Prediction of Type 2 Diabetes

- HAPT2D è un prediction tool per identificare pazienti a rischio per lo sviluppo del diabete.
- Esso non è un tool diagnostico. E' stato concepito per persone senza un'attuale diagnosi di diabete allo scopo di evidenziare il rischio per una persona di sviluppare il diabete di tipo 2 nei successivi 2 anni.
- Attualmente tale tool è designato per la popolazione Spagnola e Finlandese.
- Sito web in fase prototipale sviluppato da Arsenà.IT in collaborazione con dei professori dell'Università di Padova.

### References:

Di Camillo B, Hakaste L, Sambo F, Gabriel R, Kravic J, Isomaa B, Tuomilehto J, Alonso M, Facchinetti A, Groop LC, Cobelli C, Tuomi T. "High accuracy of prediction of Type 2 diabetes with a model combining basic and advanced data depending on availability." *Diabetes Care* (submitted)

### Acknowledgements:

FP7-MOSAIC project funded by the European Union under the 7th framework program (grant agreement FP7-600914).

### Scenario selector

Scenario 1

Scenario 2

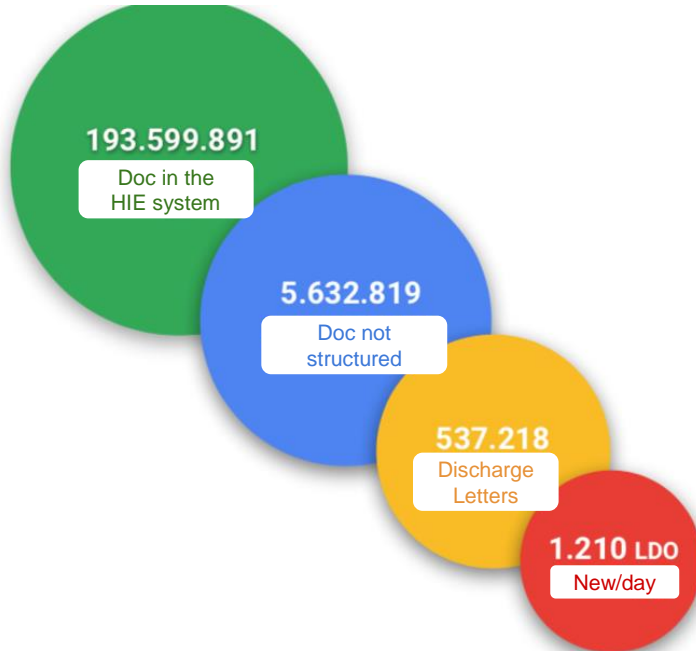
Scenario 3

Nucleo minimo di variabili senza risultati di test di laboratorio (età, sesso, BMI, etc..)

Sono incluse inoltre informazioni raccolte dopo una visita o dopo esami di laboratorio (es. pressione del sangue, trigliceridi,..)

Sono inclusi inoltre i risultati dell'OGTT

## The Project



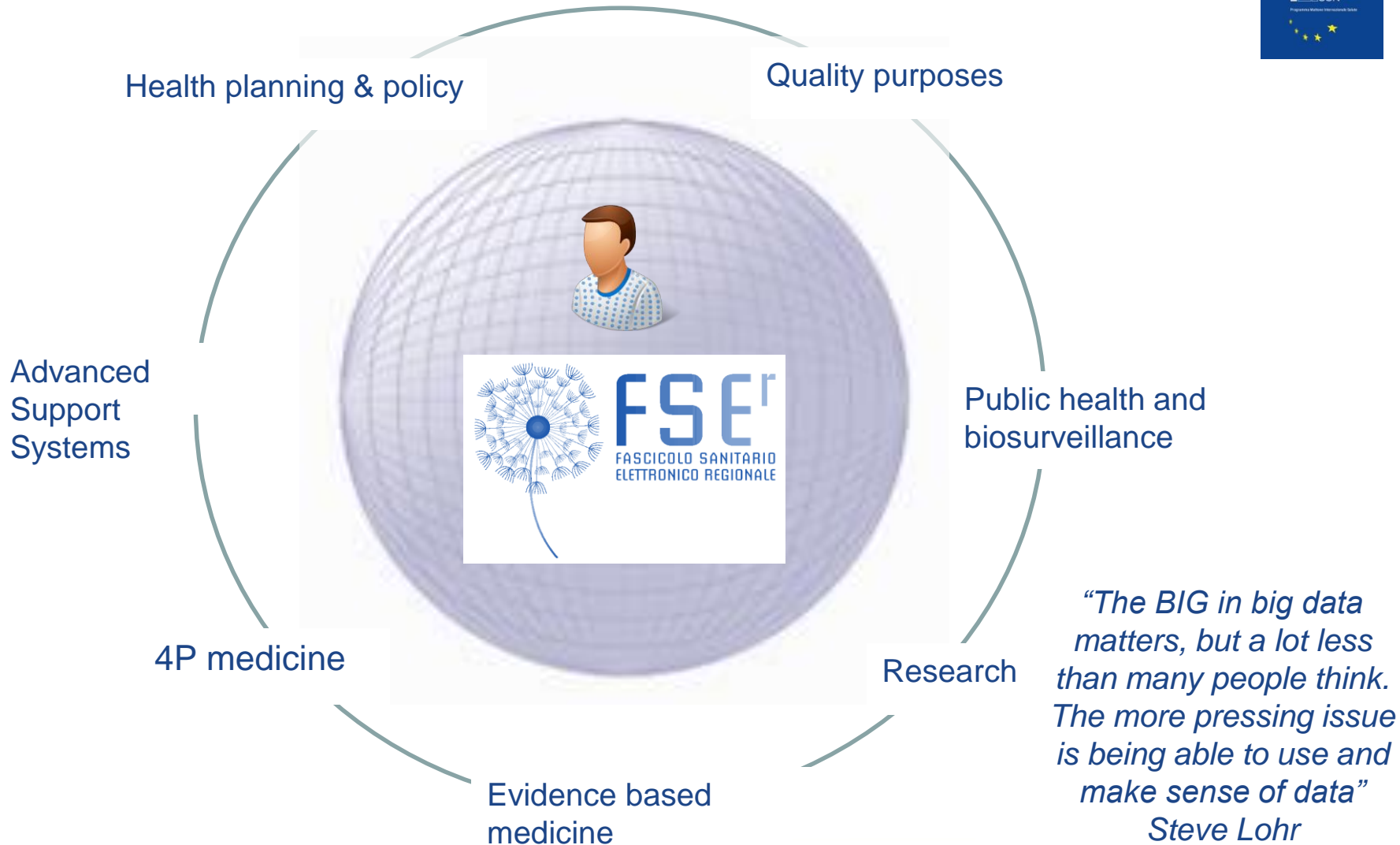
### Goal

Test a ML application in the healthcare world and specifically to the NOT structured clinical documents present in the HIE system

### In detail

Implementation of an automatic classification system of DLs using Machine Learning (ML) techniques, with automatic identification of the diagnosis present in the document.

# The value of data



# Grazie per la vostra attenzione

*Giulia Pellizzon - [gpellizzon@consorzioarsenal.it](mailto:gpellizzon@consorzioarsenal.it)*



[@Consorz\\_Arsenal](https://twitter.com/Consorz_Arsenal)



[www.youtube.com/user/consorzioarsenal](https://www.youtube.com/user/consorzioarsenal)



[www.linkedin.com/company/arsen-l.it](https://www.linkedin.com/company/arsen-l.it)



[consorzioarsenal\\_it](https://www.instagram.com/consorzioarsenal_it)