



CONFERENCE

“Integrated services: organizational healthcare models in the framework of chronic diseases”.

Healthcare pathways evaluation in the framework of the Regional Outcome Evaluation Program of healthcare interventions (P.Re.Val.E.)

26-27 March 2018

Turin, C.so Regina Margherita, 174

Danilo Fusco
Department of Epidemiology Lazio Region





Regional Health Care Evaluation Program in Lazio Region (DGR n. 301/2008)

to monitor and promote quality and equity of care

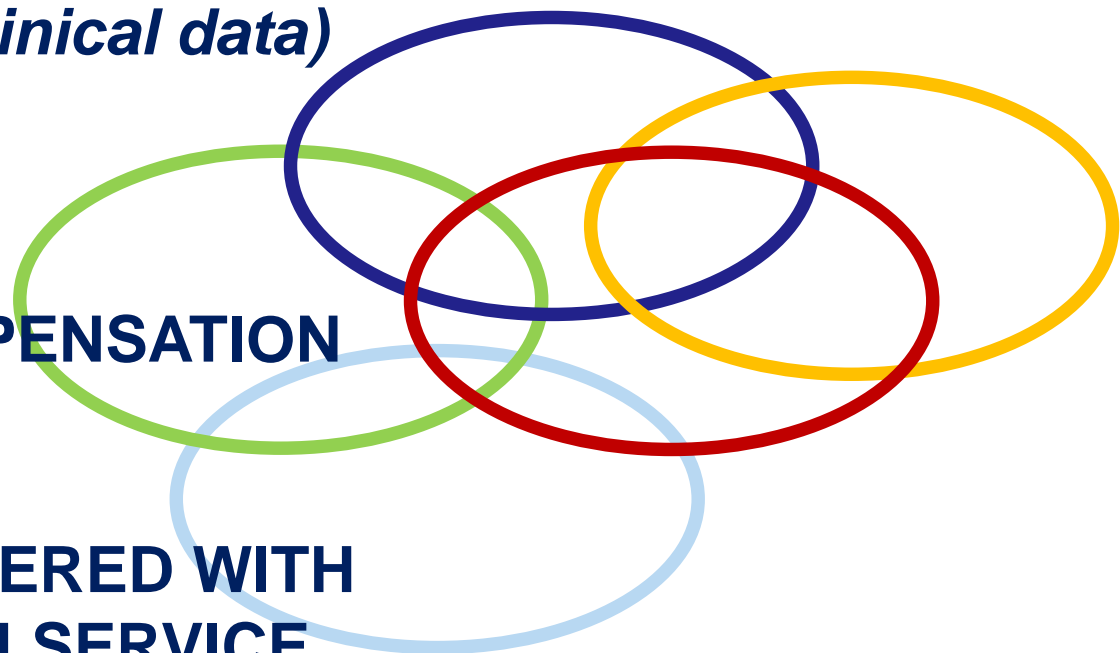
STRATEGIC tool for the Regional government

OPERATIVE tool for Local Health Authorities and health professionals

Support for the development of the National Program for Comparative Evaluation of Health care Outcomes (PNE)

Integrated use of Health Information Systems

- ✓ **HIS - HOSPITAL**
 - *CEDAP (birth / delivery)*
 - *RAD-ESITO (plus clinical data)*
- ✓ **HEIS - EMERGENCY**
- ✓ **OSSIS – OUTPATIENT**
(specialistic care)
- ✓ **PHARM - DRUGS DISPENSATION**
- ✓ **EXEMPTIONS**
- ✓ **MIS – MORTALITY**
- ✓ **POPULATION REGISTERED WITH
THE REGIONAL HEALTH SERVICE**
(*anagrafe assistiti*)



Health Information Systems use an anonymous personal code that allows a subject to be identified in different registries



Introduzione

Fonti

Metodi

Appendice



Benvenuto/a
dep

Esci



Presentazioni pubbliche



Corso di formazione



Contatti



Privacy



Ospedaliera



Territoriale



Sintesi per
struttura/ASL



Emergenza



Percorsi
assistenziali



Equità



Strumenti per
audit clinici
organizzativi

**HEALTH CARE
PATHWAYS**

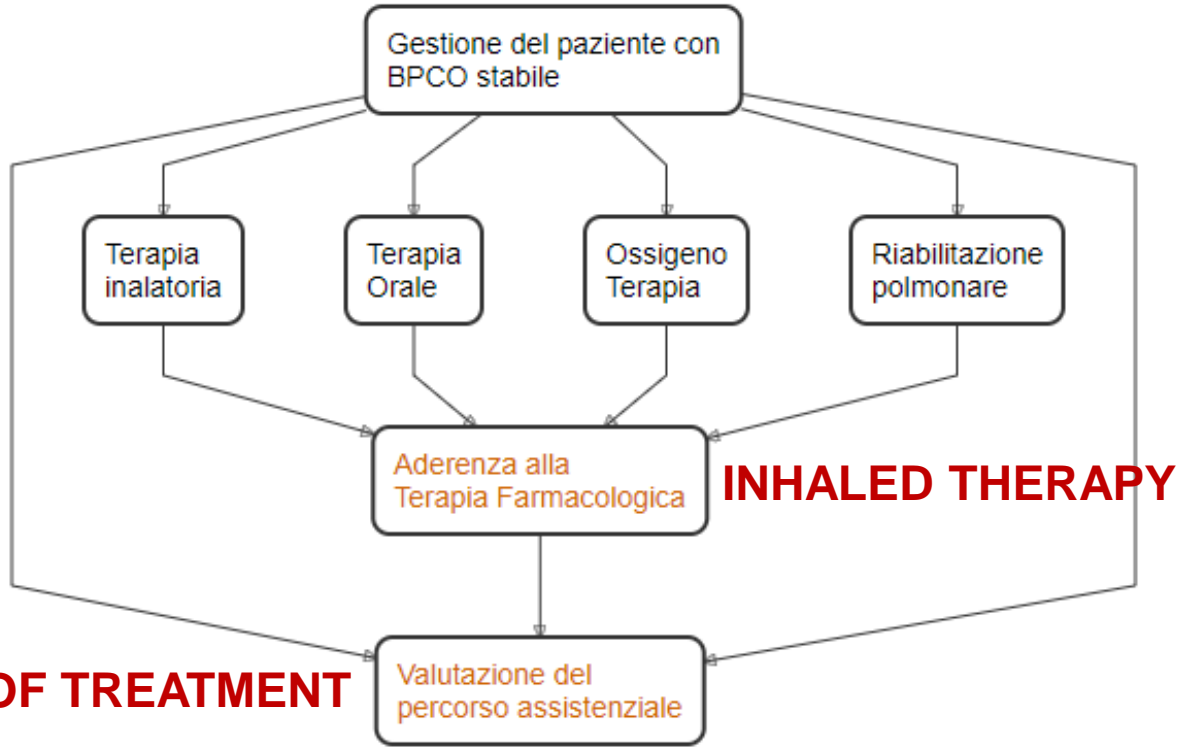
P.Re.Val.E.
2017

P.Re. Val. E
 Percorsi Assistenziali
 IMA
 Ictus
 Diabete
COPD
 stabile
 riacutizzata
 TM Mammella

Ospedaliera
 Territoriale
 Sintesi per struttura/ASL
 Emergenza
 Percorsi
 Equità
 Strumenti per audit

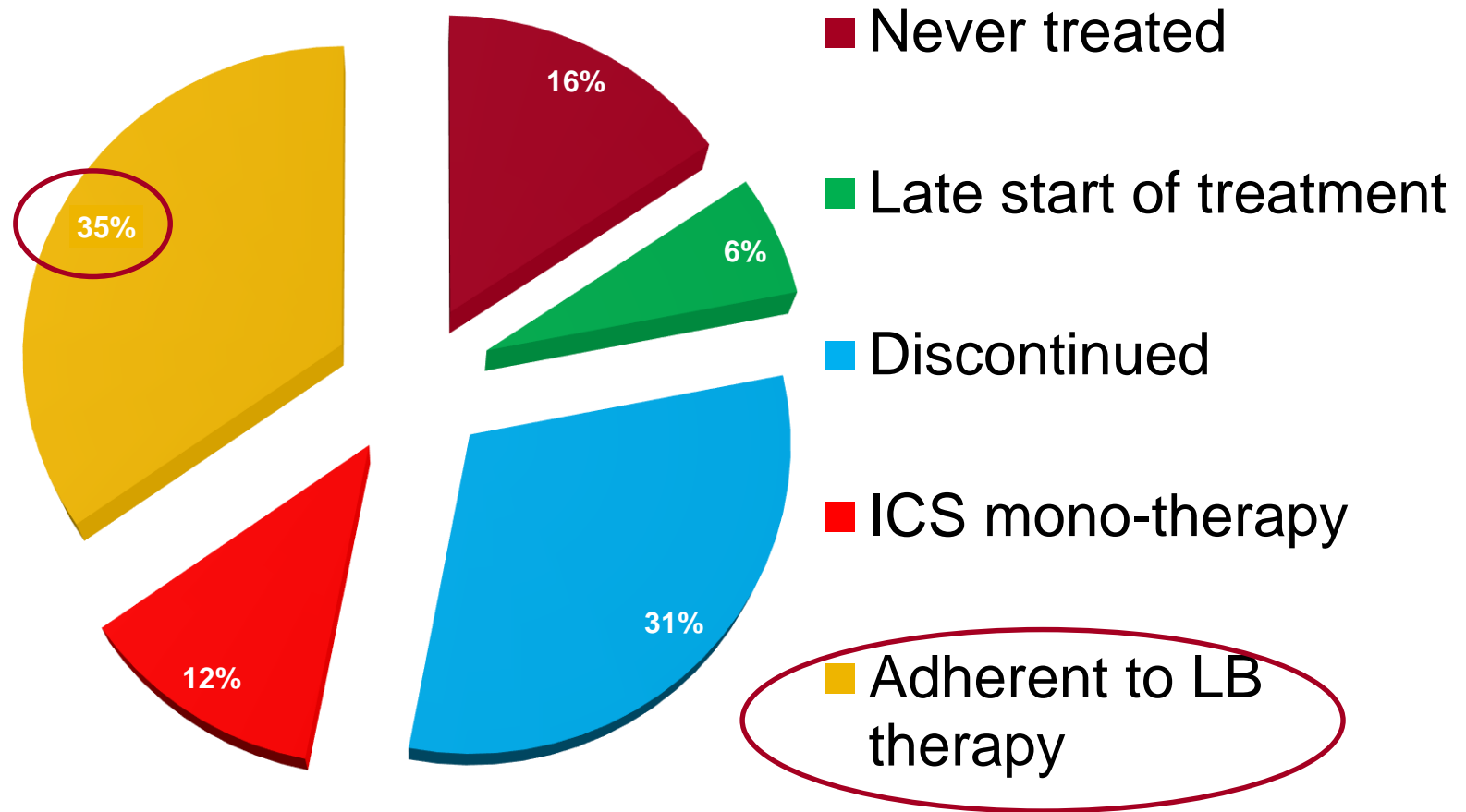
Tratto da: <http://pathways.nice.org.uk>

COPD stable

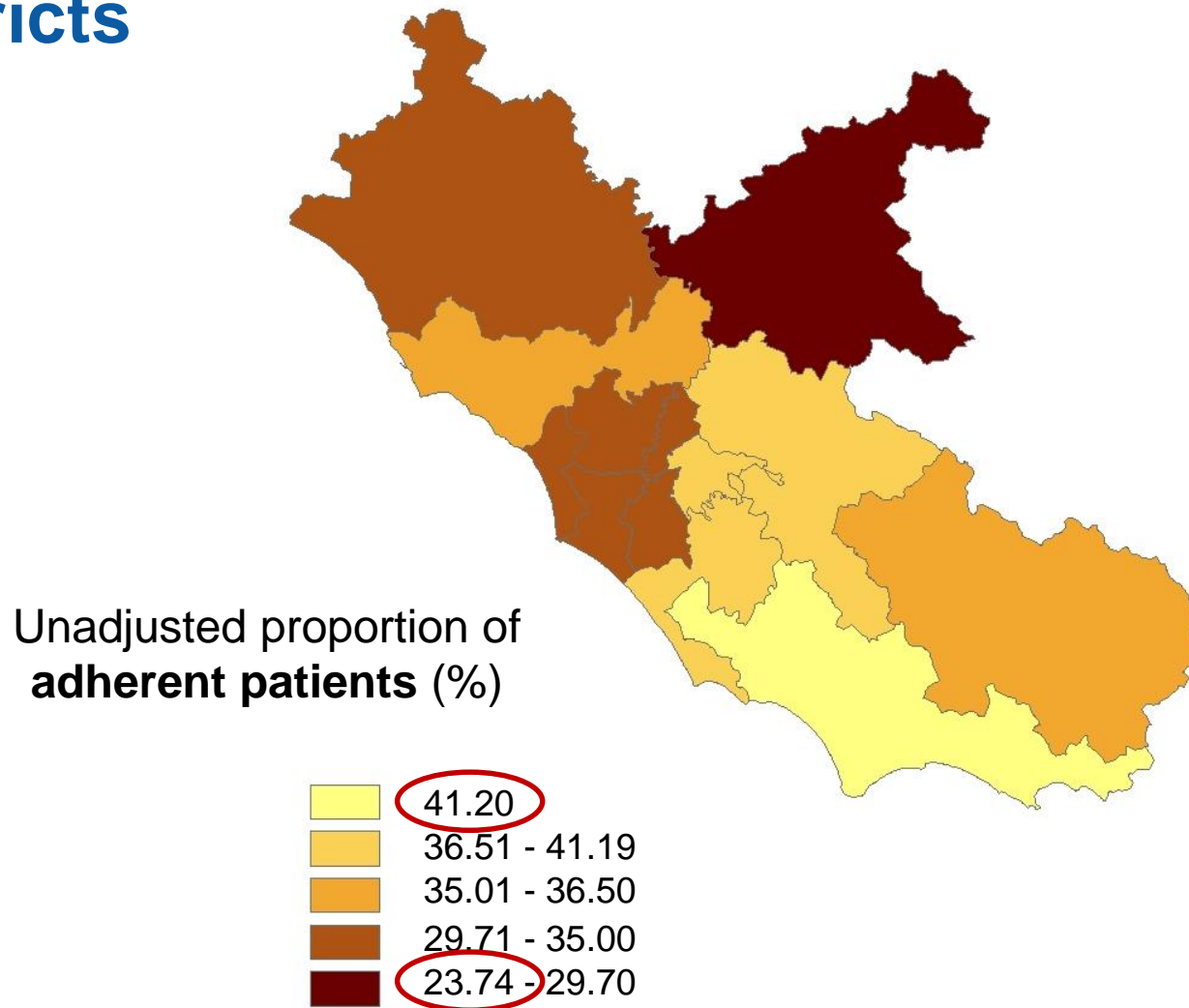


EFFECTIVENESS OF TREATMENT

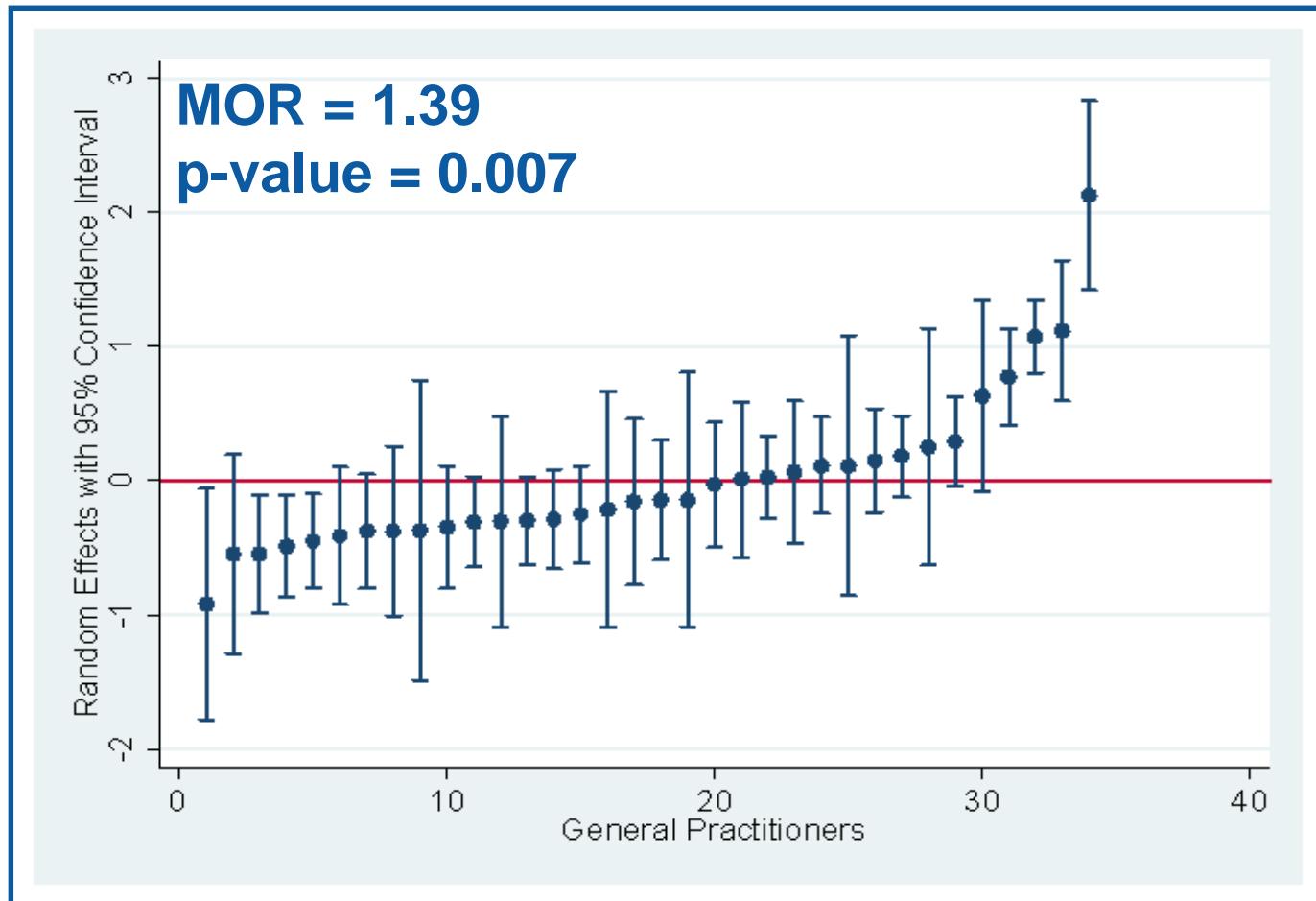
Long-acting bronchodilators (LB): the drug-use patterns.



Adherence to LB therapy: variability among health districts

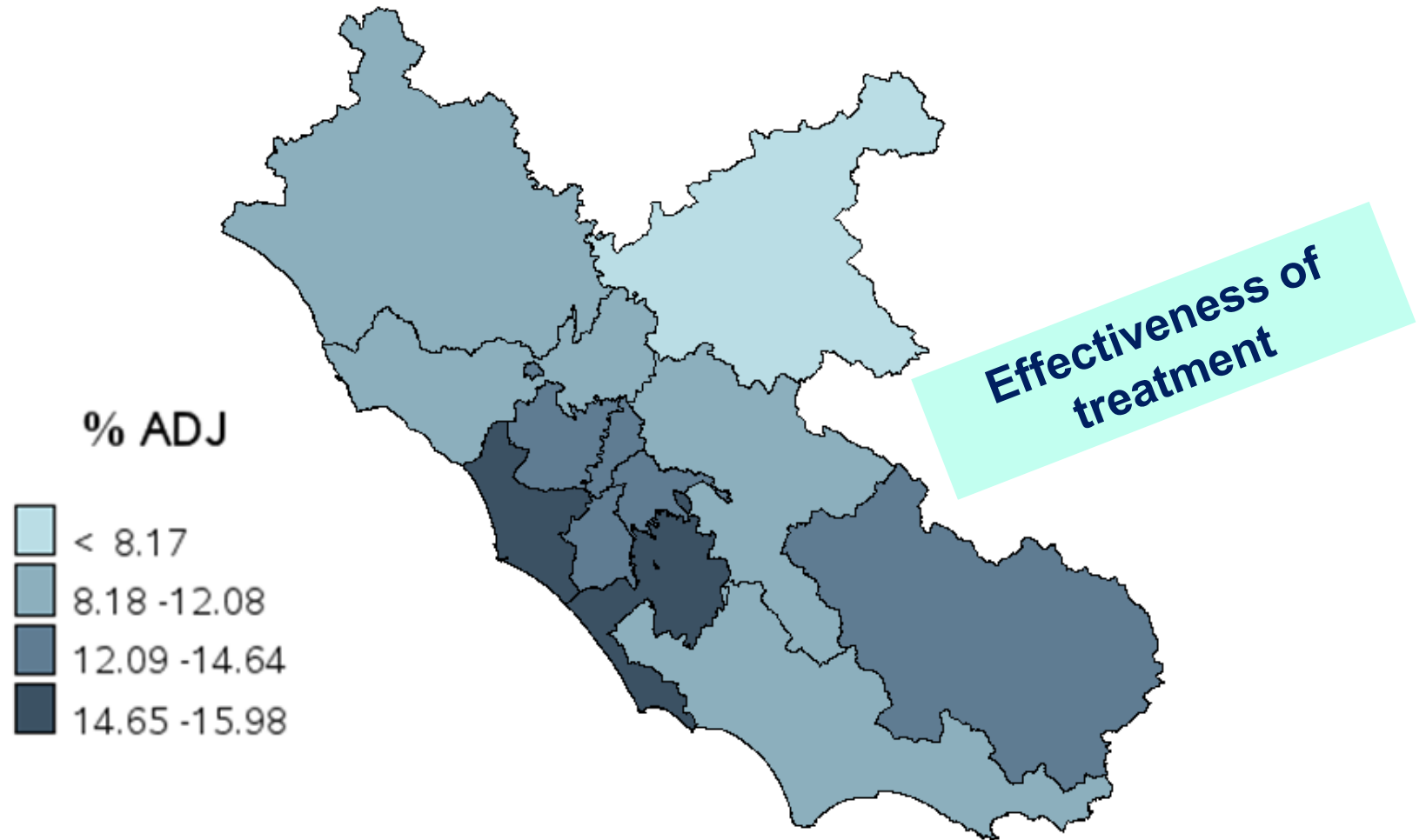


Adherence to LB therapy: variability among GP's



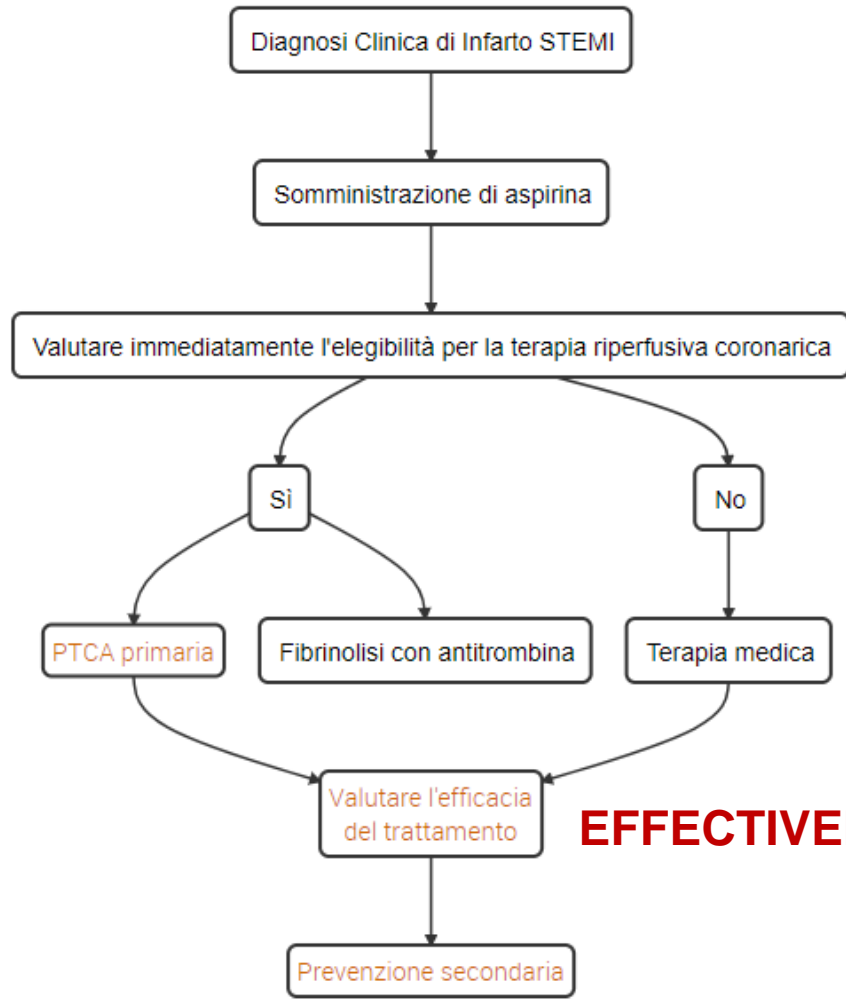
Variability in patient's adherence to LB therapy among a sample of GPs, after controlling for patient's socio-demographic and clinical characteristics.

COPD: 30-day readmission rates in patients discharged after COPD exacerbation. Lazio 2016



- AMI**
- Ictus
- Diabete
- BPCO
- TM Mammella

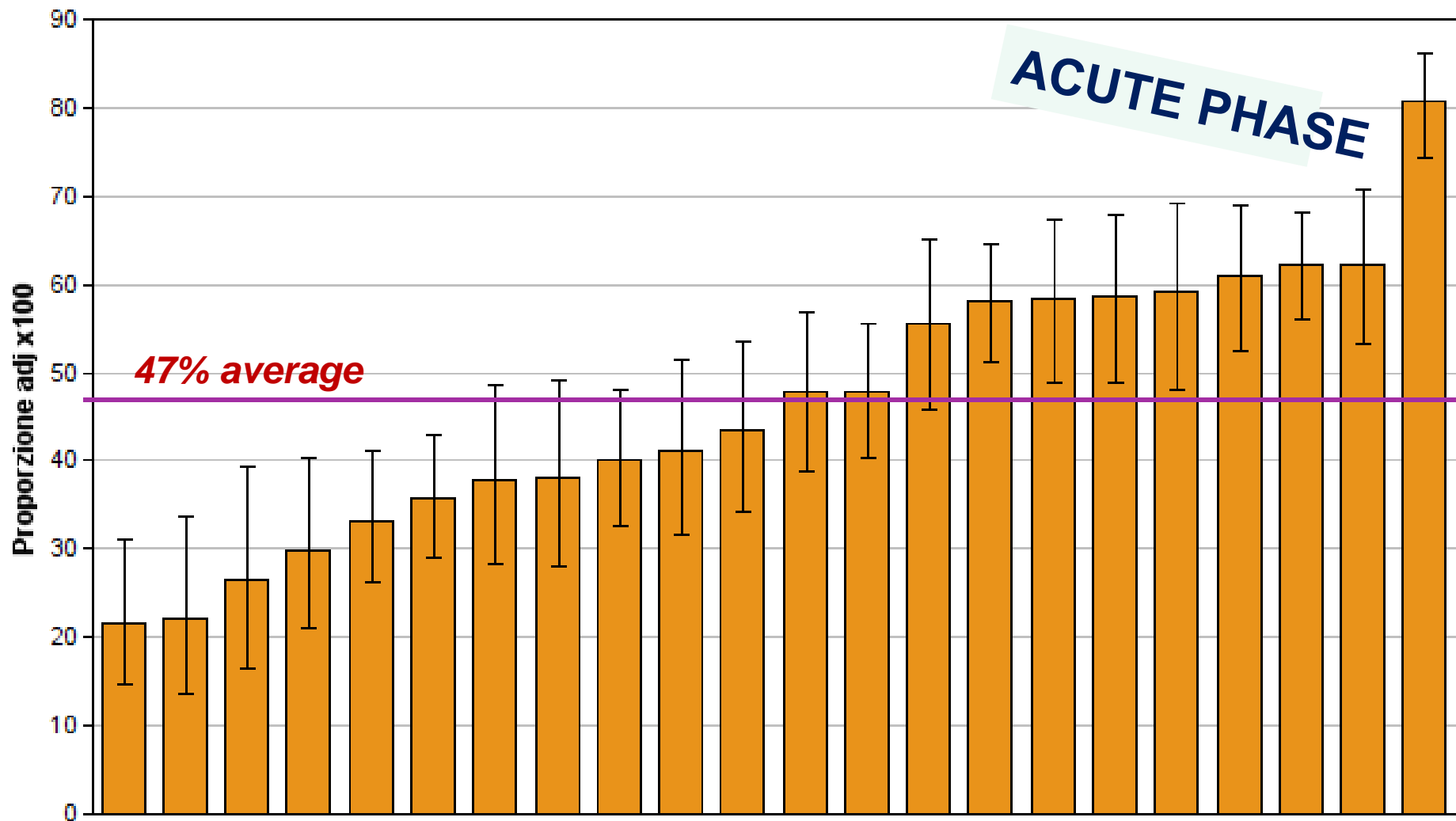
Tratto da: <http://pathways.nice.org.uk>



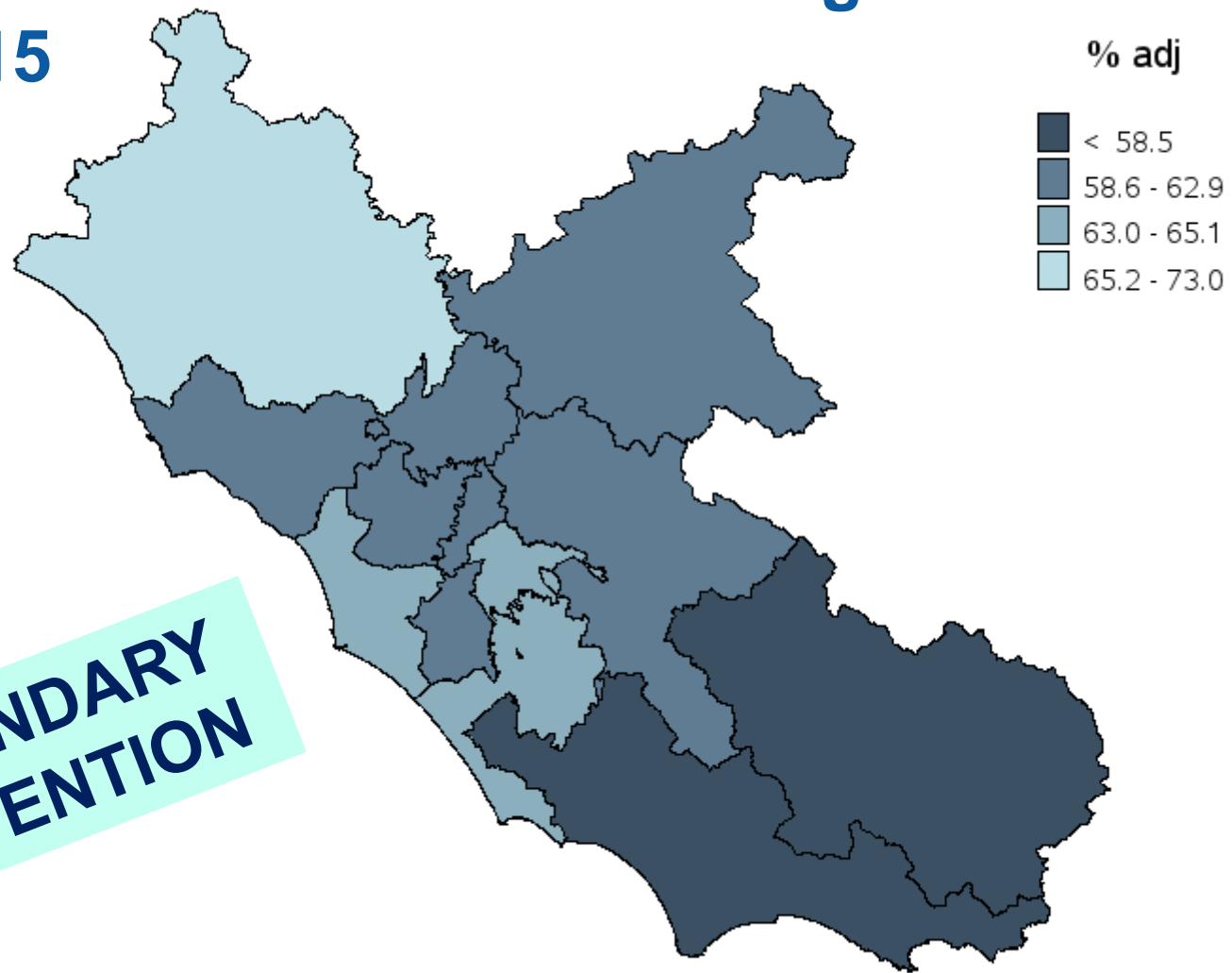
Primary PCI

EFFECTIVENESS OF TREATMENT

STEMI: adjusted rates of patients with PTCA within 90' by hospital. Lazio 2016

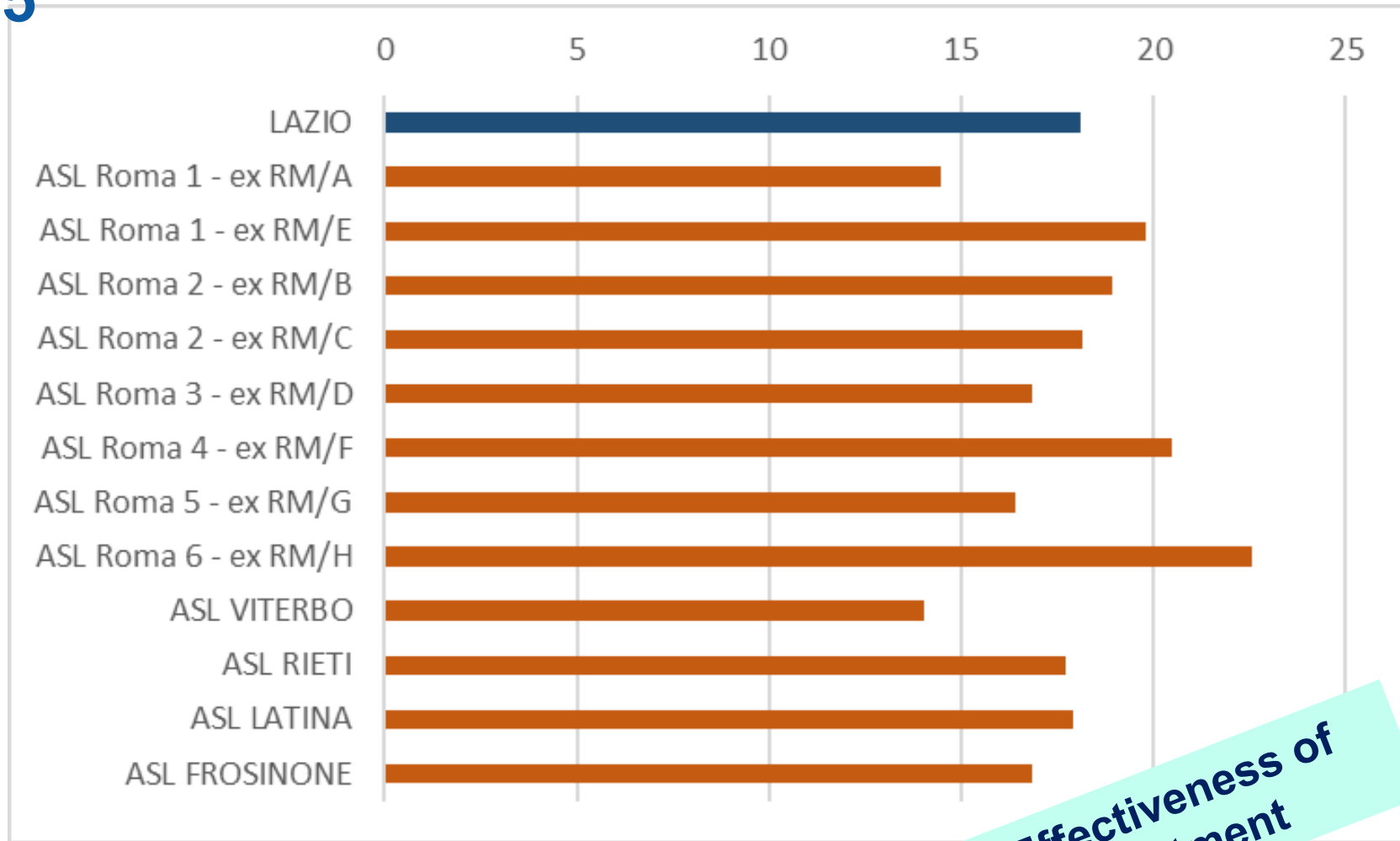


% of EB drug treatments during 12 months after acute myocardial infarction among health districts. Lazio 2015



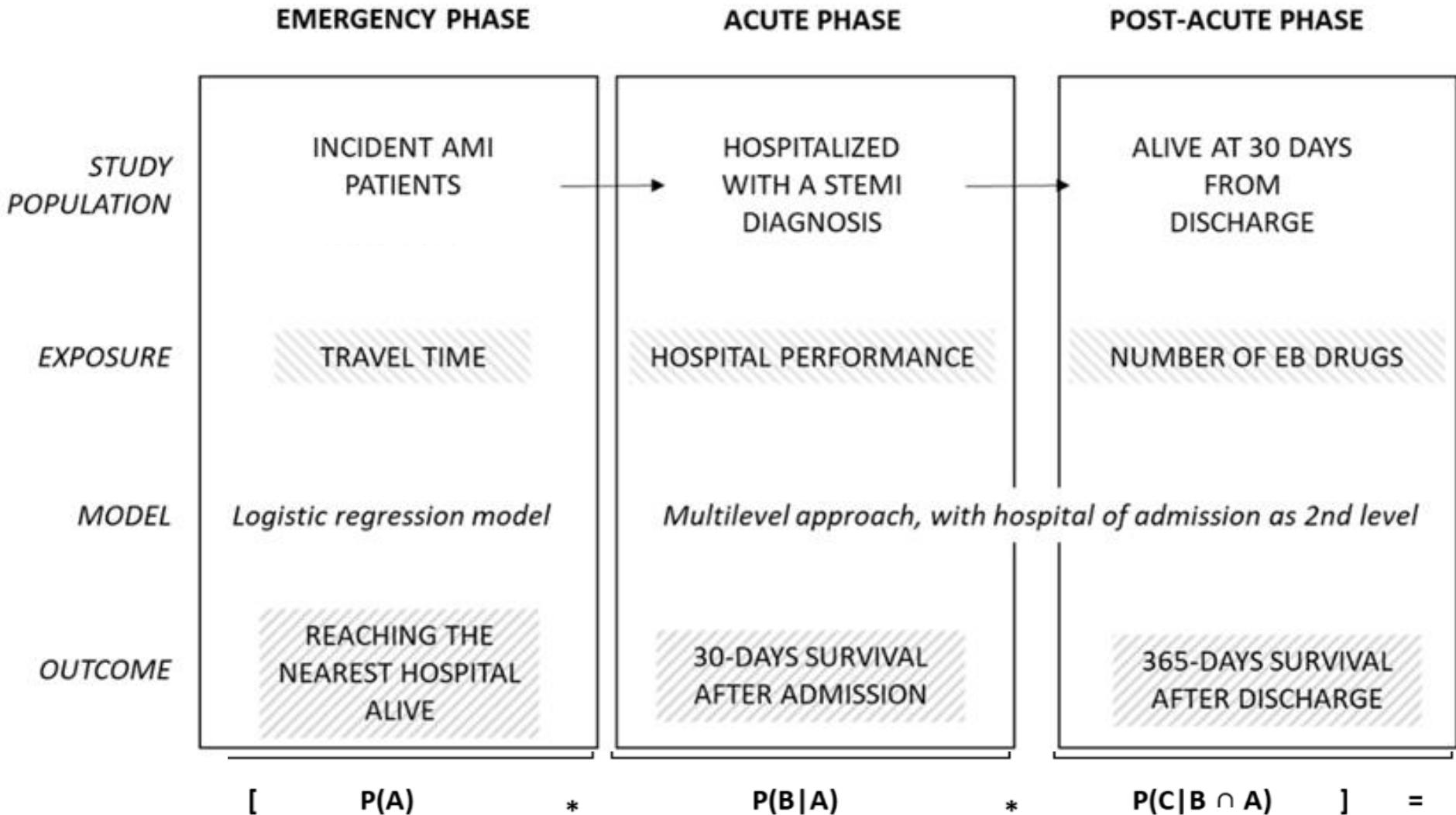
SECONDARY PREVENTION

% of Major Adverse Cardiovascular and Cerebrovascular Events (MACCE) after AMI among health districts. Lazio 2015




Effectiveness of treatment

Bayes' theorem: conditional probability model

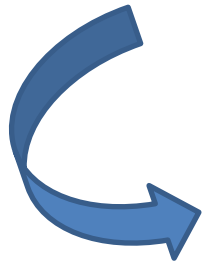


P.Re.Val.E.

 **SUPPORT FOR** CLINICAL and ORGANIZATIONAL **AUDIT**
AT LOCAL LEVEL

 **STRATEGIC TOOL FOR THE REGIONAL**
GOVERNMENT

Key point



QUALITY and DEVELOPMENT
of
HEALTH INFORMATION SYSTEMS

***Be careful about reading health books.
You may die of a misprint.***

Mark Twain

THANKS FOR YOUR ATTENTION

(d.fusco@deplazio.it)