



Taking the world a step forward



Carina Dantas

Beyond the European 2020 Health Strategy | 20 April 2021

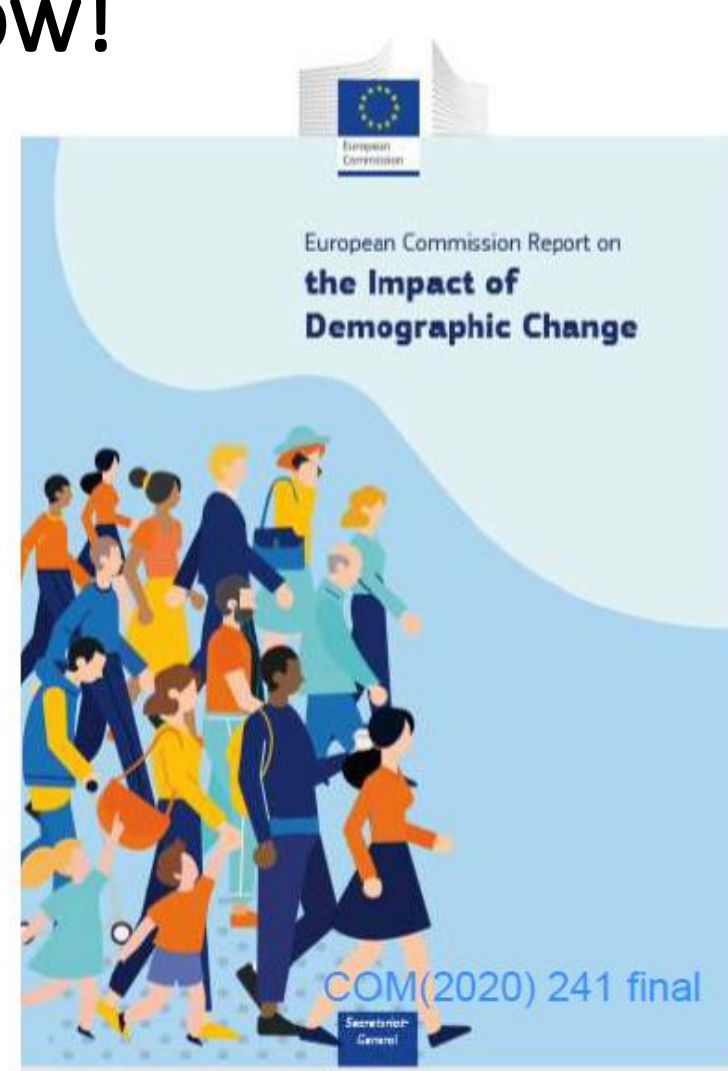
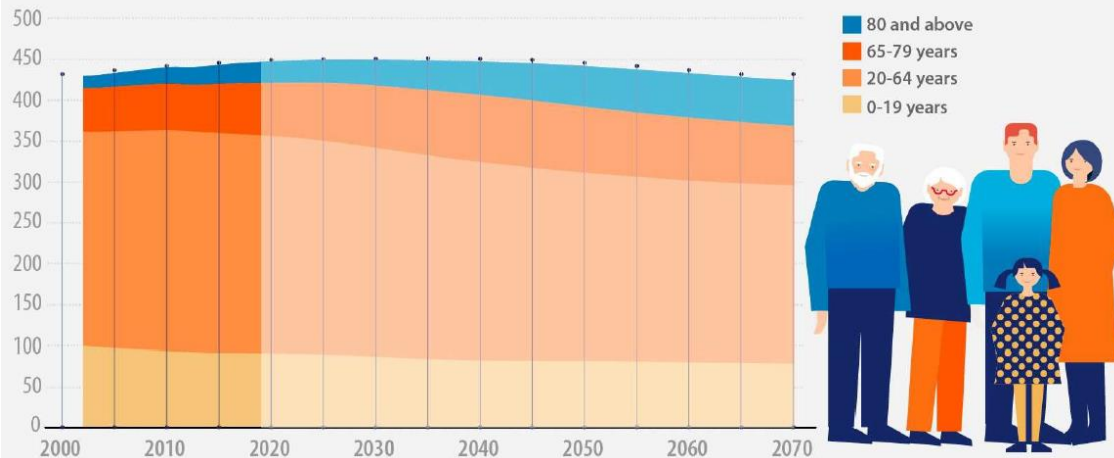
Healthy and active ageing: the role of the citizen and the organization of services

Consultation closes tomorrow!

The green paper builds on the Commission Report on the impact of demographic change of 17 June 2020

Population by major age groups

(in millions, EU-27, observed (2001-2019) and projected (2020-2070) data)



Lifecycle approach

Growing needs:

healthcare,
long-term care /
mobility, connectivity,
well-being



Formative years:

life-long learning, healthy
& active ageing



Retirement: volunteering,
intergenerational relations /
adequate, fair and
sustainable pension
systems, old
age poverty



Working age: labour markets,
productivity, innovation and
business
opportunities



Territorial aspects

Lifelong learning is most effective when it starts early in life. The first years of life are critical for developing cognitive and social skills.



2. Making the most of our working lives

- Bringing more people into the workforce
- Productivity, innovation and business opportunities



3. New opportunities and challenges in retirement

- Staying active
- Old-age poverty
- Adequate, fair and sustainable pension systems



4. Meeting the growing needs of an ageing population

- Health and long-term care
- Mobility, connectivity and accessibility
- Inter-generational solidarity

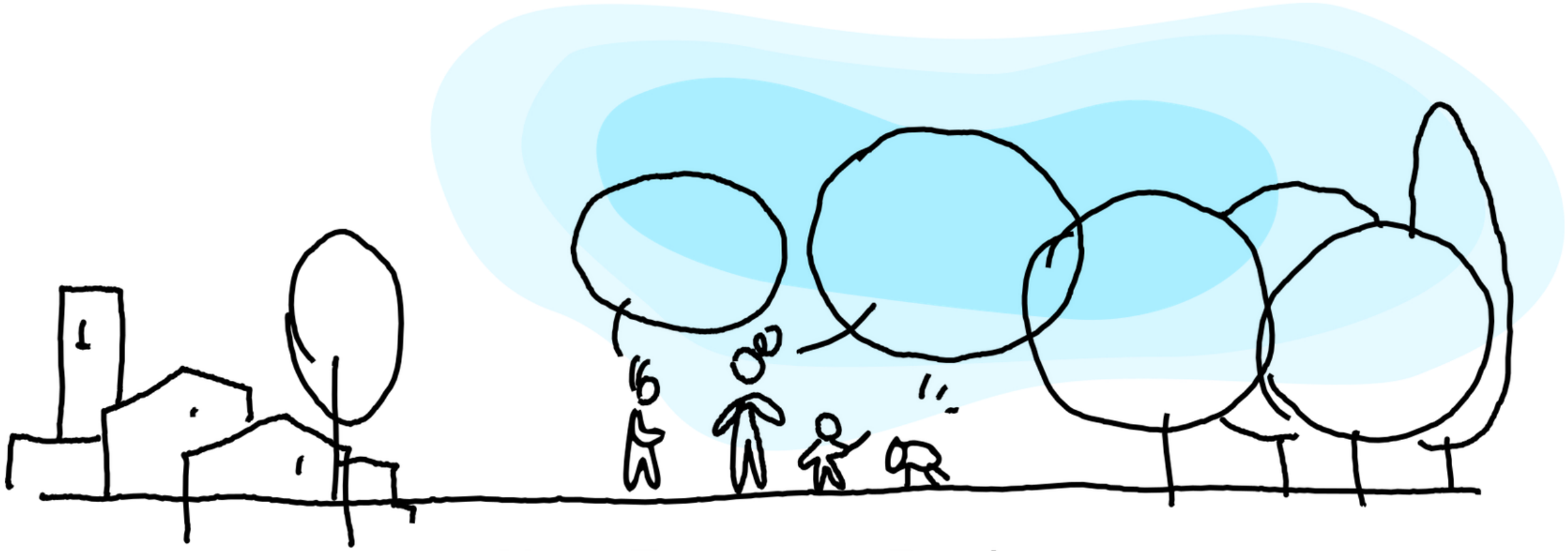




Council conclusions on the integration of ageing into public policies, published under the aegis of our Portuguese EU Presidency

An underlying #SHAFE perspective on a document that provides for health and well-being throughout the life cycle and promotes inclusive environments for all:


39. SUPPORT sustainable urban and rural planning that promotes mobility based on universal design, safety and wellbeing and facilitates the participation of older people in social life and access to all necessary services and infrastructure, taking into account their specific needs.



New European Bauhaus

beautiful | sustainable | together

Our shared journey starts by getting to know each other and by understanding what this initiative means to each one of us. Please join if you want to connect with a growing community interested in building beautiful, sustainable, inclusive places to live together after the pandemic.



“ I want NextGenerationEU to kickstart a European renovation wave and make our Union a leader in the circular economy. But this is not just an environmental or economic project: it needs to be a new cultural project for Europe. ”

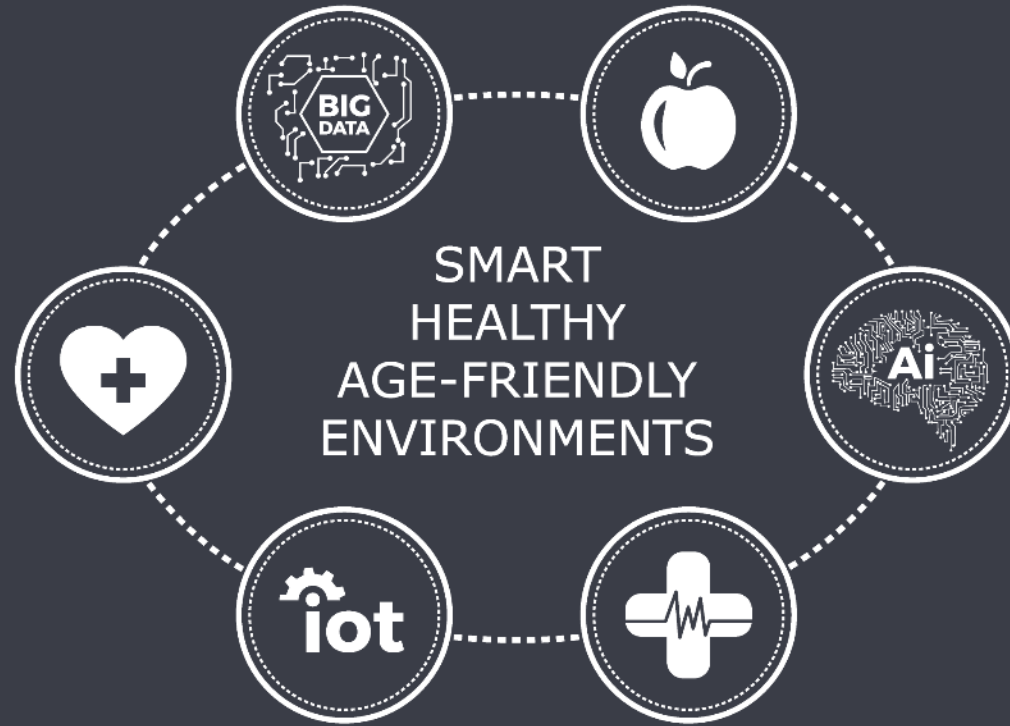
— **Ursula Von der Leyen**

The New European Bauhaus is a creative and interdisciplinary initiative, convening a space of encounter to design future ways of living, situated at the crossroads between art, culture, social inclusion, science and technology. It brings the Green Deal to our living places and calls for a collective effort to imagine and build a future that is sustainable, inclusive and beautiful for our minds and for our souls.

Beautiful means inclusive, accessible spaces where the dialogue between diverse cultures, disciplines, genders and ages becomes an opportunity to imagine a better place for all. It also means a more inclusive economy, where wealth is distributed and spaces are affordable.

Beautiful means sustainable solutions that create a dialogue between our built environment and the planet's ecosystems. It means to realise regenerative approaches inspired by natural cycles that replenish resources and protect biodiversity.

Beautiful means enriching experiences that respond to needs beyond our material dimension, inspired by creativity, art and culture. It means appreciating diversity as an opportunity to learn from each other.



STAKEHOLDERS NETWORK

SHAFE

A photograph of an older man and a younger woman on a boat. Both are wearing bright orange life jackets. The man, with white hair, is smiling and looking towards the woman. The woman, wearing a blue beanie and a blue jacket, is also smiling and looking at the man. They appear to be in a pleasant conversation. The background shows a body of water and trees, suggesting a lakeside or river setting. A semi-transparent grey box is overlaid on the bottom half of the image, containing text.

If people should age at their own homes, how to align **technological** development with the **building** industry for smart environments in terms of **POLICY** and **FUNDING**, enhancing a **more efficient health care system** that may add **better quality for less investment**?

A new concept was created since 2017, based on the desire to implement **Smart Healthy Age-Friendly Environments (SHAFE)** across Europe, fostering happier and healthier people in all communities.

This idea took shape and became a solid movement. That is how SHAFE was born and further launched in 2018, by Caritas Diocesana de Coimbra and AFEdeemy, in close cooperation with several European organisations.

COORDINATORS



Caritas Diocesana
de COIMBRA



MAIN PARTNERS



European Innovation
Partnership on Active
and Healthy Ageing



EURO
CITIES



Towards
an Age-Friendly
Europe
Government on Demographic Change



EIP ON AHA
RSCN



EHTEL
EUROPEAN HEALTH TELECOMS ASSOCIATION



ECTP
INNOVATIVE BUILT
ENVIRONMENT



EIP-SCC
EUROPEAN INNOVATION PARTNERSHIP
FOR SMART CITIES AND COMMUNITIES



EUROPEAN CENTRE FOR
SOCIAL WELFARE POLICY
AND RESEARCH

SHAFE began as a Thematic Network, approved by the European Commission, with the ambition to draw policy makers, organisations and citizens' attention to the need of better alignment between health, social care, built environments and ICT, both in policy and funding.

The conclusions of this extensive work in 2018, gathering over 160 organisations as partners, was delivered to the European Commission and Member States in a Joint Statement and a Framing Paper in December 2018.

After this, SHAFE evolved to a European **Stakeholders Network**, which is currently working to achieve better COOPERATION and IMPLEMENTATION, as the major challenges for this next period.

JOINT STATEMENT ON SMART HEALTHY AGE-FRIENDLY ENVIRONMENTS



A SHARED VISION



COOPERATION
COMMUNICATION



FUNDING / CONDITIONS
FOR IMPLEMENTATION



NEEDS



CITIZEN
EMPOWERMENT

RESEARCH FOR
PREDICTION / PREVENTION



RECOMMENDATIONS TO CITIZENS



WE EXPECT YOU TO PARTICIPATE



+ ACTIVE CITIZENSHIP



+ HEALTH LITERACY



+ ADAPTED ENVIRONMENTS



+ PHYSICAL EXERCISE

**CITIZEN
EMPOWERMENT**

WHAT'S MISSING?

COOPERATION

and

IMPLEMENTATION



TASK FORCE SHAFE?

POSITION PAPER 2020



Single digital solutions are not the panacea to all issues:

CITIZENS need to improve:

- digital skills
- health literacy
- engagement and democratic participation
- Less inequalities on access

ENVIRONMENTS have as major challenges:

- house retrofitting
- digital infrastructures
- public spaces and transport
- climate neutral solutions (in the area of environments)

and, finally, **HEALTH AND CARE** need:

- reliable and accessible big data
- integrated and person-centered solutions (new pathways)
- implementation guidelines and long-term funding solutions/business models

We acknowledge that all these challenges are interconnected and that a global approach is needed!

How to scale-up and implement SHAFE?

7 POLITICAL MEASURES TO IMPLEMENT IN REGIONS / MS

Policy makers

What financial incentives can you approve to foster the implementation of SHAFE?

Insurance companies

What measures can be included in insurance packages that foster SHAFE?

Citizens

What commitment is fair to ask on taking the lead on healthy habits and digital&health literacy?

Financers

What measures do you need to invest or develop SHAFE?

Health & care providers

What measures are lacking to implement SHAFE and what can you contribute?

Researchers/Academia

what can you bring on lifelong learning/digital skills and research for prevention?

Building industry

What can you bring and what you need to integrate smart built environments?



SHAFE BEING IMPLEMENTED

International Interdisciplinary Network on Smart Healthy Age-friendly Environments

With **researchers and
stakeholders** from all sectors.

NET4
age-friendly



Chair
Carina Dantas

Vice-Chair
Willeke van Staalduinen


EUROPEAN COOPERATION
IN SCIENCE & TECHNOLOGY

 Funded by the Horizon 2020 Framework Programme
of the European Union

The main goal is to foster awareness and support the creation and implementation of smart, healthy indoor and outdoor environments for present and future generations.

Public authorities,
standards
organisations

Academics and
scientists



Citizens



Businesses, caregivers,
and non-governmental
organisations

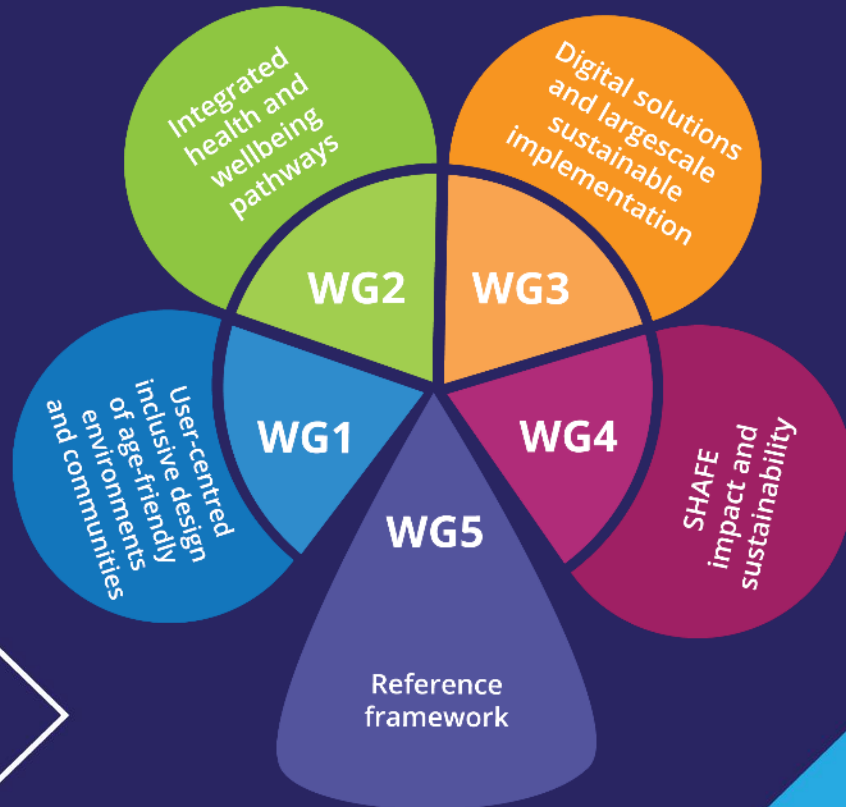


MANAGEMENT COMMITTEE
82 MEMBERS | 56 Substitutes
44 Countries

FULL NETWORK
~290 participants

Establishment of local or regional ecosystems to work on
health & wellbeing in an age-friendly digital world.

With citizens, public authorities, businesses, NGOs and researchers.
They will be supported by 5 **Working Groups**.



**"Success is not final; failure is not fatal: It is the
courage to continue that counts."**



<https://shine2.eu/>



Carina Dantas
carinadantas@shine2.eu
+351 936498277